

Design Approach Lower Ground Floor



Day space on the lower ground floor

Design Approach

Lower Ground Floor



View in the lower ground courtyard

Design Approach

Lower Ground Floor

Daylight Analysis

Sefaira is a modelling software that has been used in these early stages of design to analyse and inform our design decisions for Danson Road.

On the lower ground floor we used Sefaira to ensure that the size and number of openings allowed each bedroom to achieve an adequate average daylight factor.

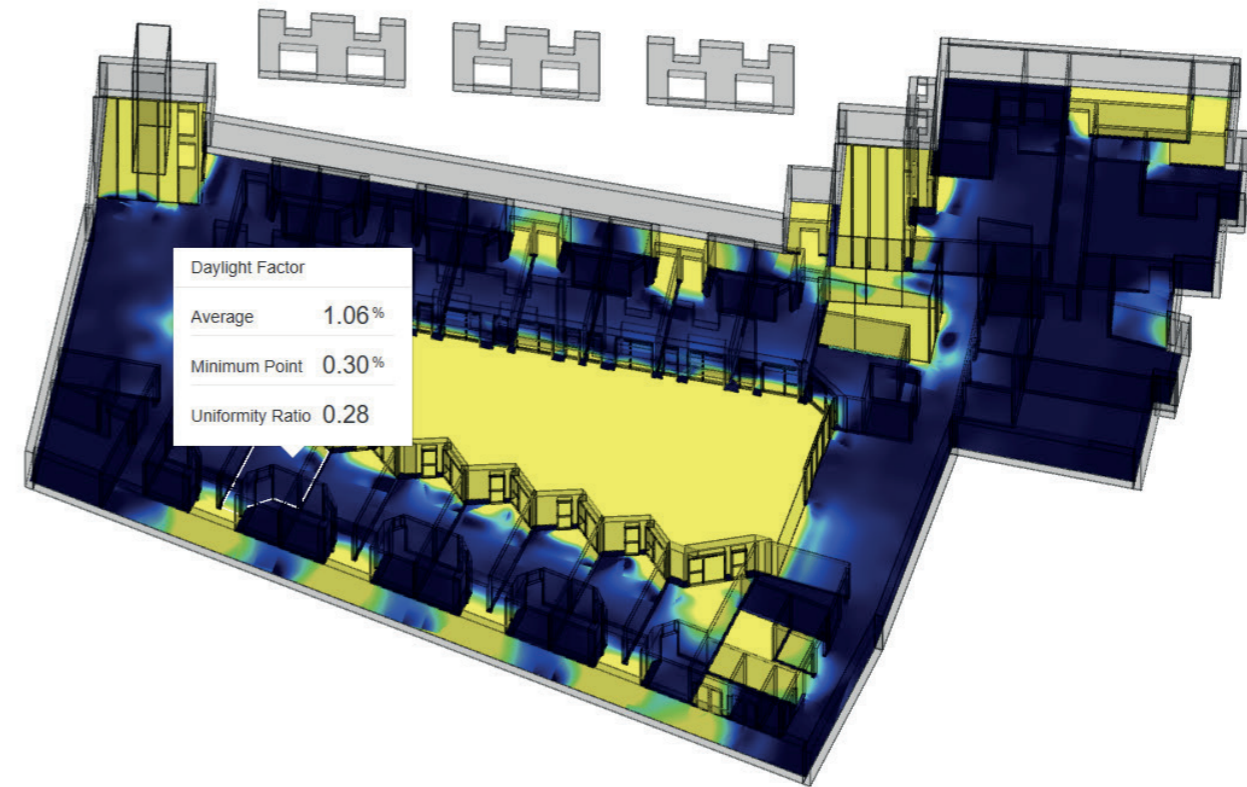
Following guidance regarding best practice in the UK we have ensured that all bedrooms on this floor have an average daylight factor of at least 1% as recommended.

The material selection for the sunken courtyard would utilise the reflectivity values of pale materials to further enhance the quality of light in the surrounding rooms.

Layout

The bedrooms on the southern boundary have a staggered frontage which directs views onto the terrace and away from the bedroom windows

opposite to protect privacy. Each bedroom has a door directly into the sunken courtyard to encourage residents to interact with nature in a secure environment.



Sefaira analysis showing the average daylight factor in the lower ground floor



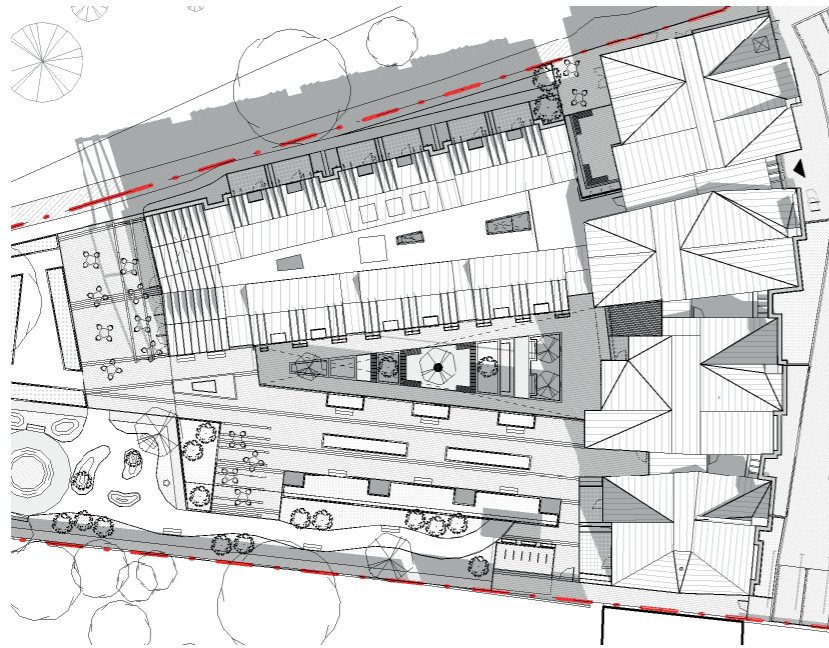
Lower ground floor plan



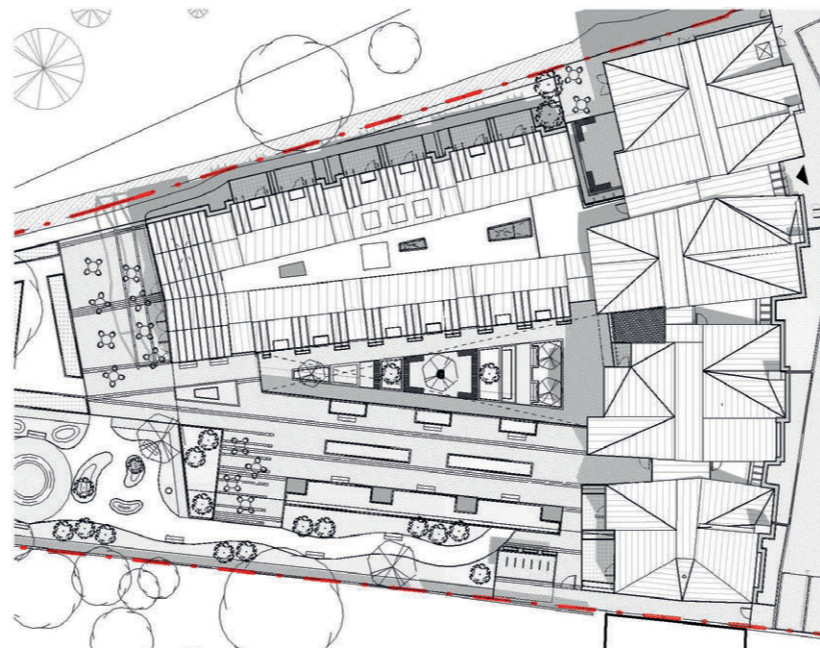
Sunken garden

Design Approach

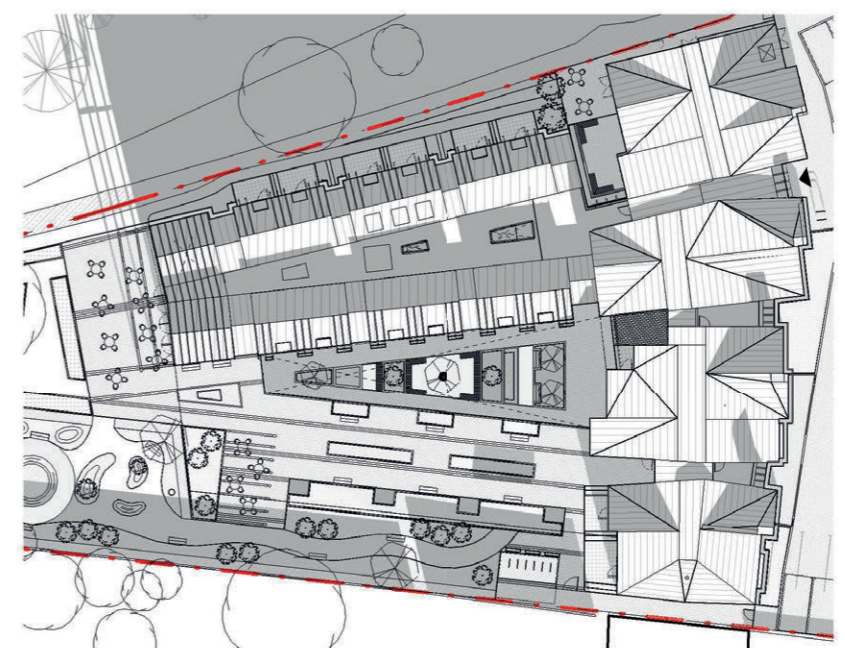
Lower Ground Floor



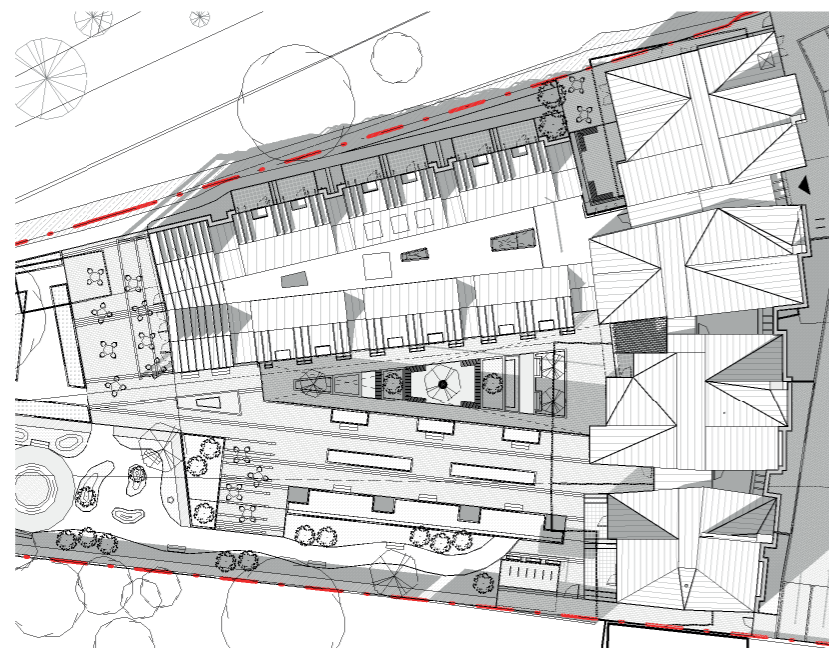
Shadow study March 21 11:00



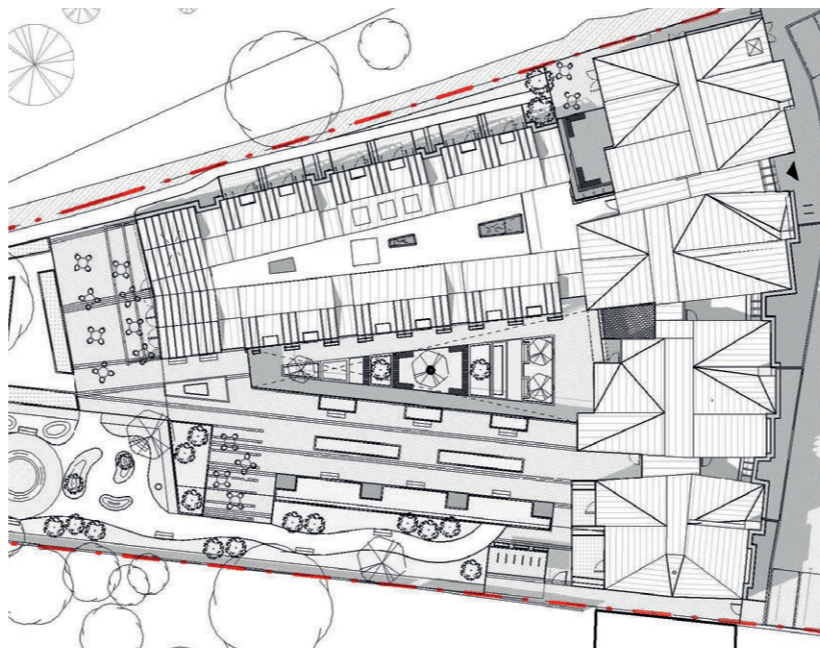
Shadow study June 21 11:00



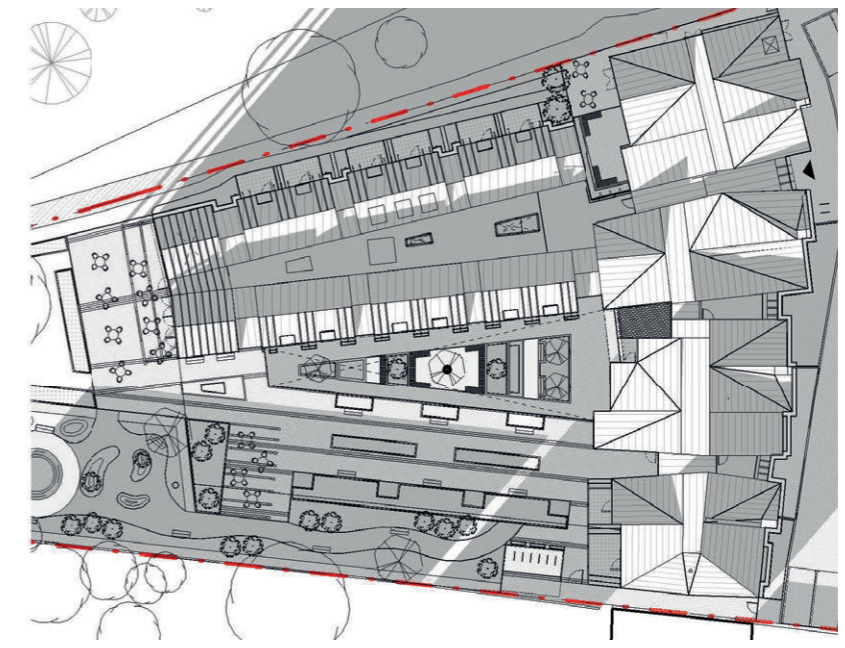
Shadow study December 21 11:00



Shadow study March 21 15:00

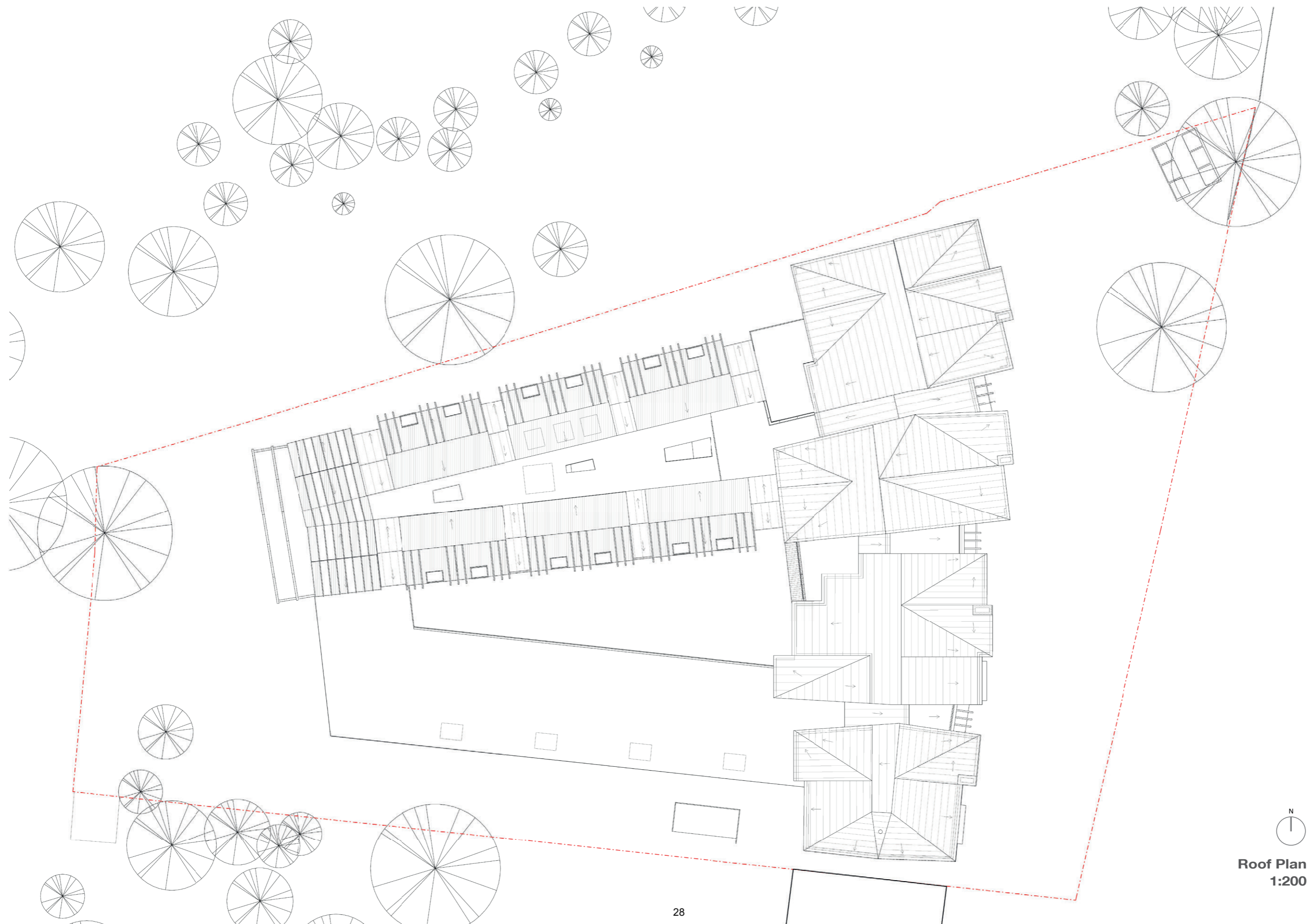


Shadow study June 21 15:00



Shadow study December 21 15:00

Design Approach Roof Plan



N
Roof Plan
1:200