

# London Borough of Bexley

## Strategic Flood Risk Assessment – Level 2

Appendix B – Level 2 Mapping – Thamesmead & Abbey Wood and Belvedere Sustainable Growth Areas

2 June 2011

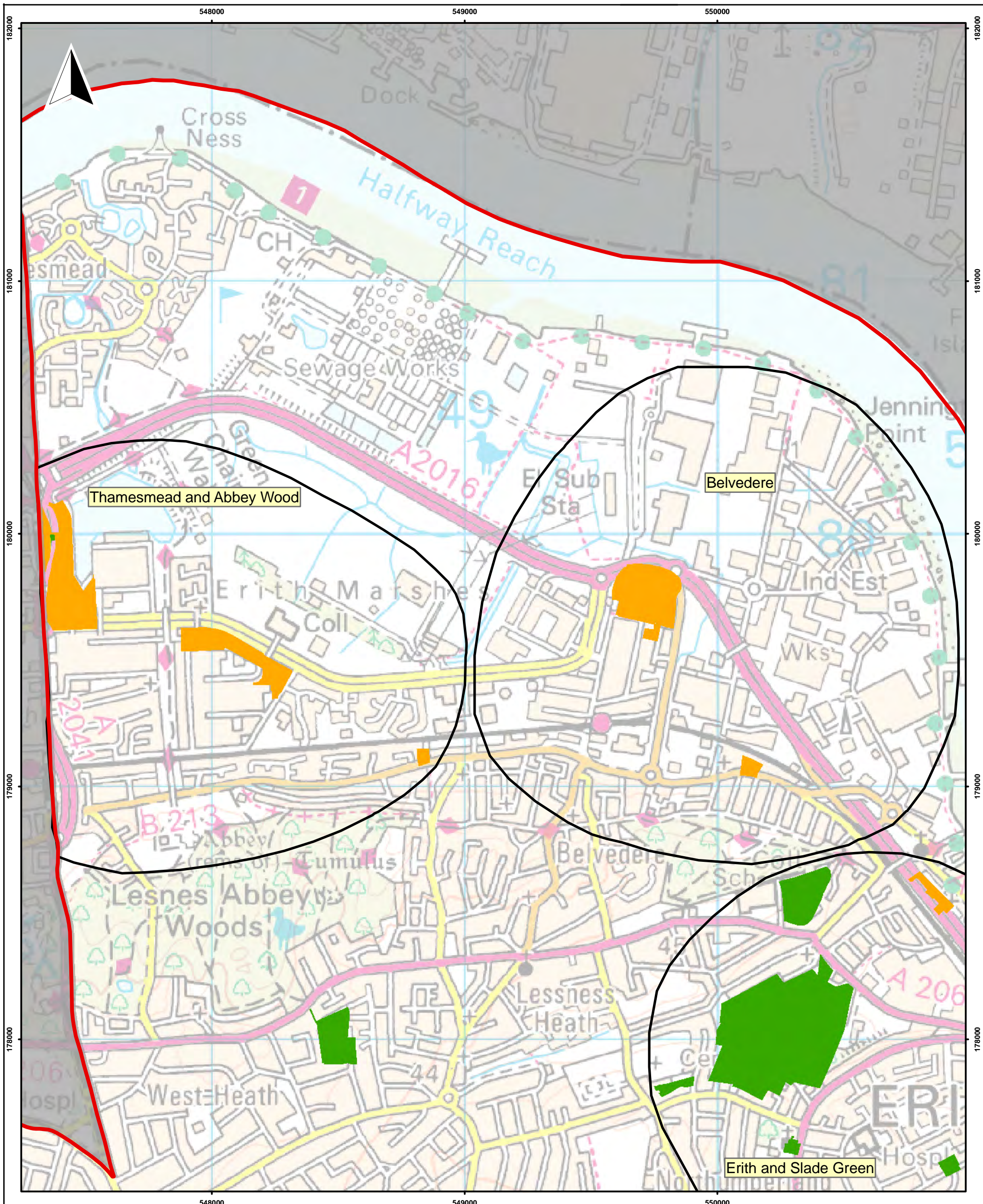


Please note that the modelling on which these maps are based may have been superseded.

# Entec

*Creating the environment for business*





**Key: SHLAA Sites - With Flood Zone Classification**

- Flood Zone 3
- Flood Zone 2
- Flood Zone 1

Based on Environment Agency Flood Zones 2008

- London Borough of Bexley Boundary
- LDF Growth Areas

Bexley SFRA

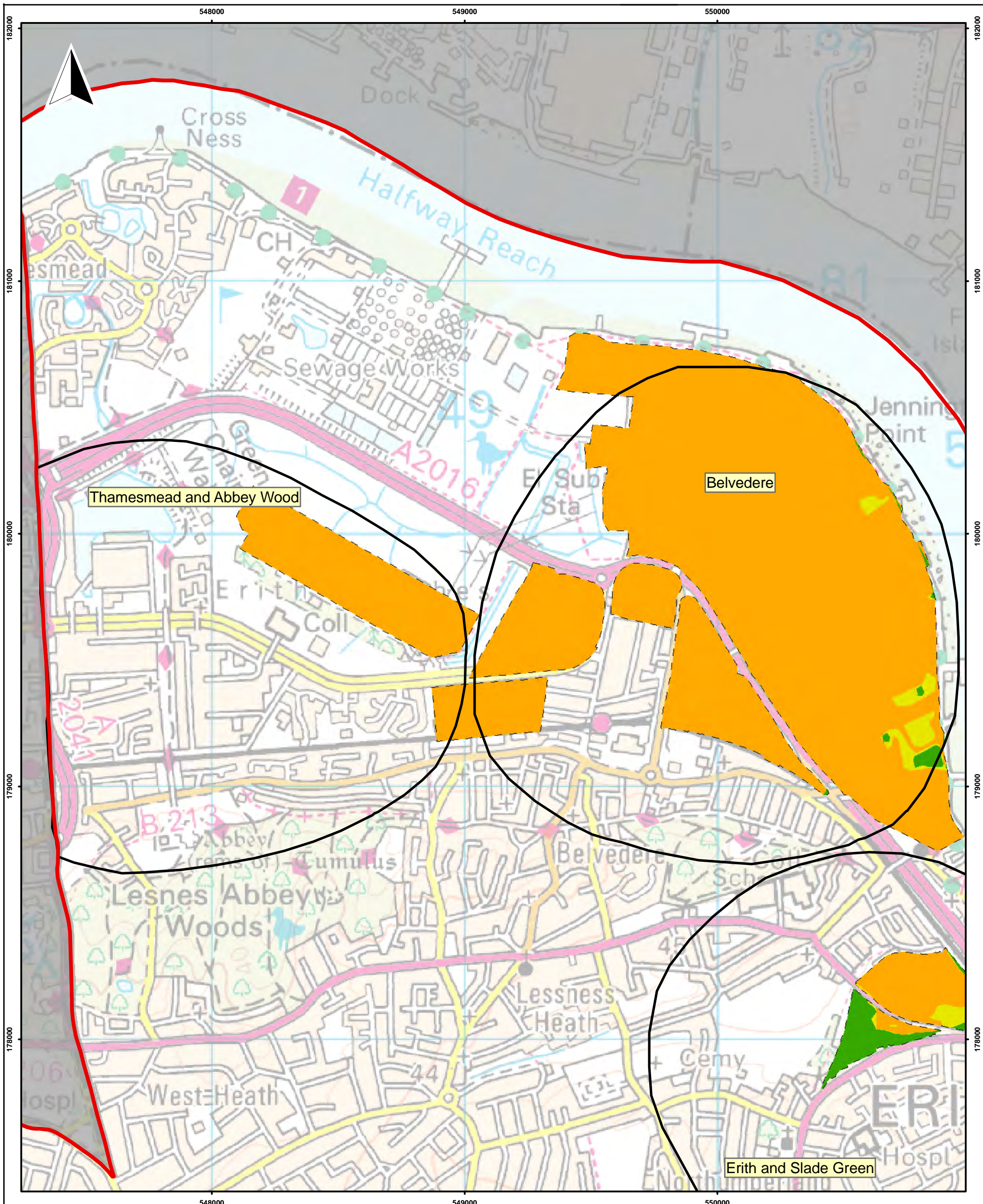
**Figure B1**  
**Thamesmead & Abbey Wood**  
**and Belvedere - Delineation of**  
**Flood Risk on SHLAA Sites**

0 200 400 600 800 Meters  
Scale: 1:14000 @ A3





July 2010  
23736-A030.mxd RAMPJ



**Entec**





**Key: Employment Sites - With Flood Zone Classification**

	Flood Zone 3		Indicates Primary Sites
	Flood Zone 2		
	Flood Zone 1		

	London Borough of Bexley Boundary
	LDF Growth Areas

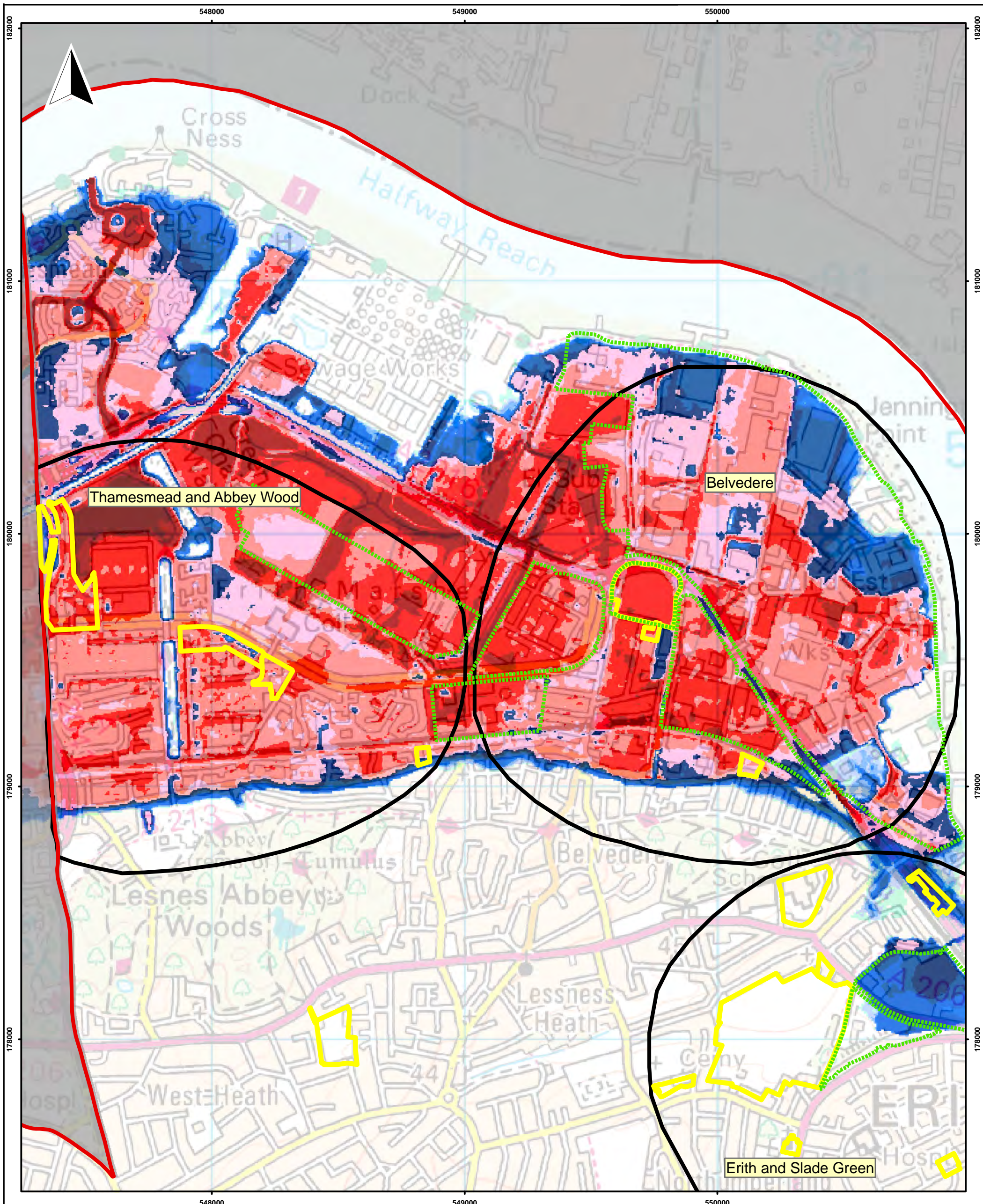
Bexley SFRA

**Figure B2**  
**Thamesmead & Abbey Wood**  
**and Belvedere - Delineation of**  
**Flood Risk on Employment Sites**

0 200 400 600 800 Meters

Scale: 1:14000 @ A3





**Key:**

- London Borough of Bexley Boundary
- LDF Growth Areas
- SHLAA Sites
- Employment Sites

**Maximum Flood Depth (m)**

0 - 0.25	2.01 - 2.5
0.25 - 0.5	2.51 - 3
0.50 - 0.75	3.01 - 3.5
0.75 - 1	3.51 - 4
1.00 - 1.5	4.01 - 5
1.51 - 2	5.01 - 6

0 180 360 540 720 Meters

Scale: 1:14000 @ A3

Bexley SFRA

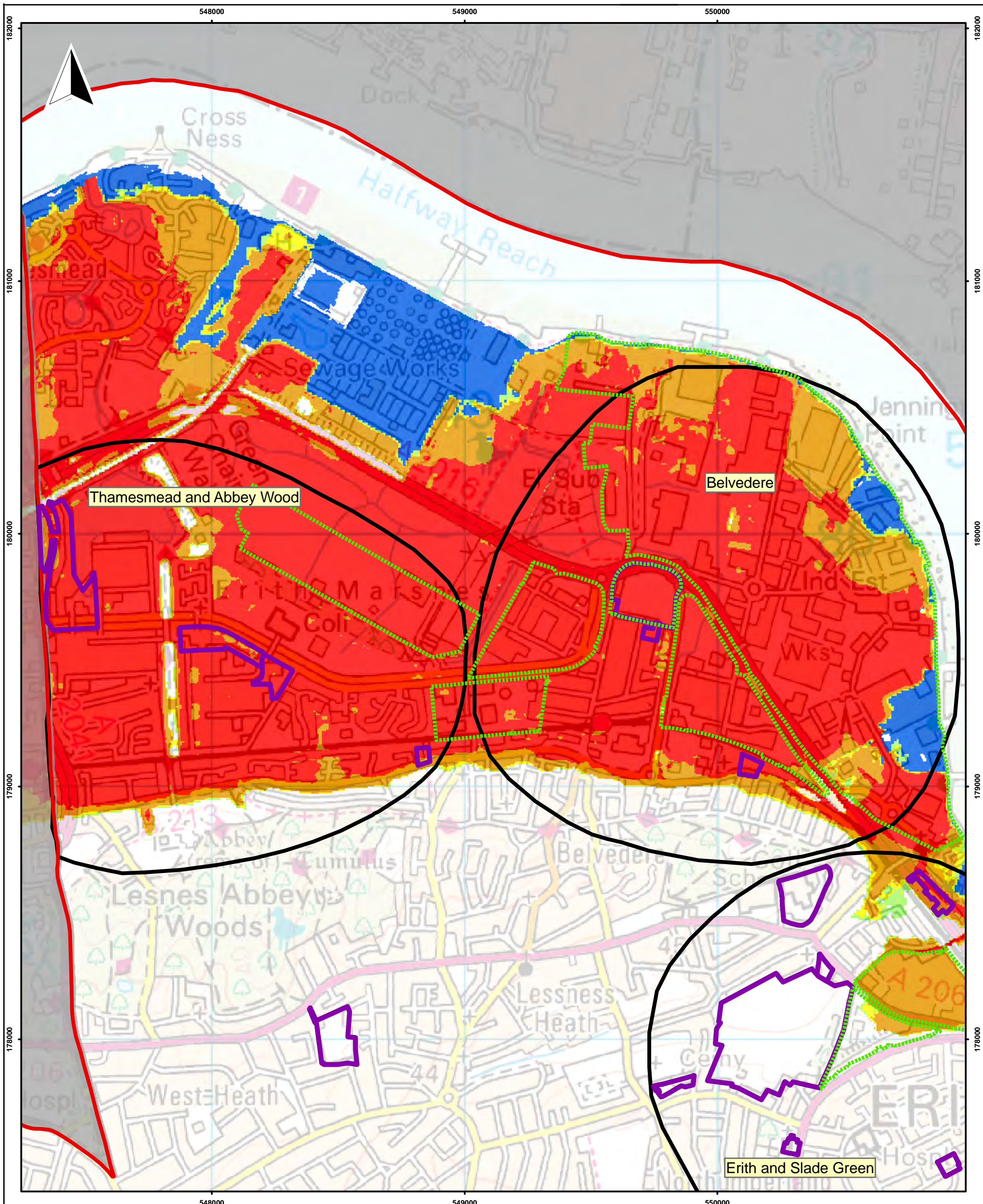
**Figure B3**

**Thamesmead & Abbey Wood and Belvedere - Maximum Predicted Flood Depths From all Breaches in the 1 in 200 Year Tidal Event Plus CC**

July 2010  
23736-A032.mxd RAMPJ

**Entec**





**Key:**

- London Borough of Bexley Boundary
- LDF Growth Areas
- SHLAA Sites
- Employment Sites

**Flood Hazard (FD2321/TR2 - Table 3.2)**

- < 0.75 Caution
- 0.75 - 1.25 'Dangerous for Some'
- 1.25 - 2.5 'Dangerous for Most'
- > 2.5 'Dangerous for All'

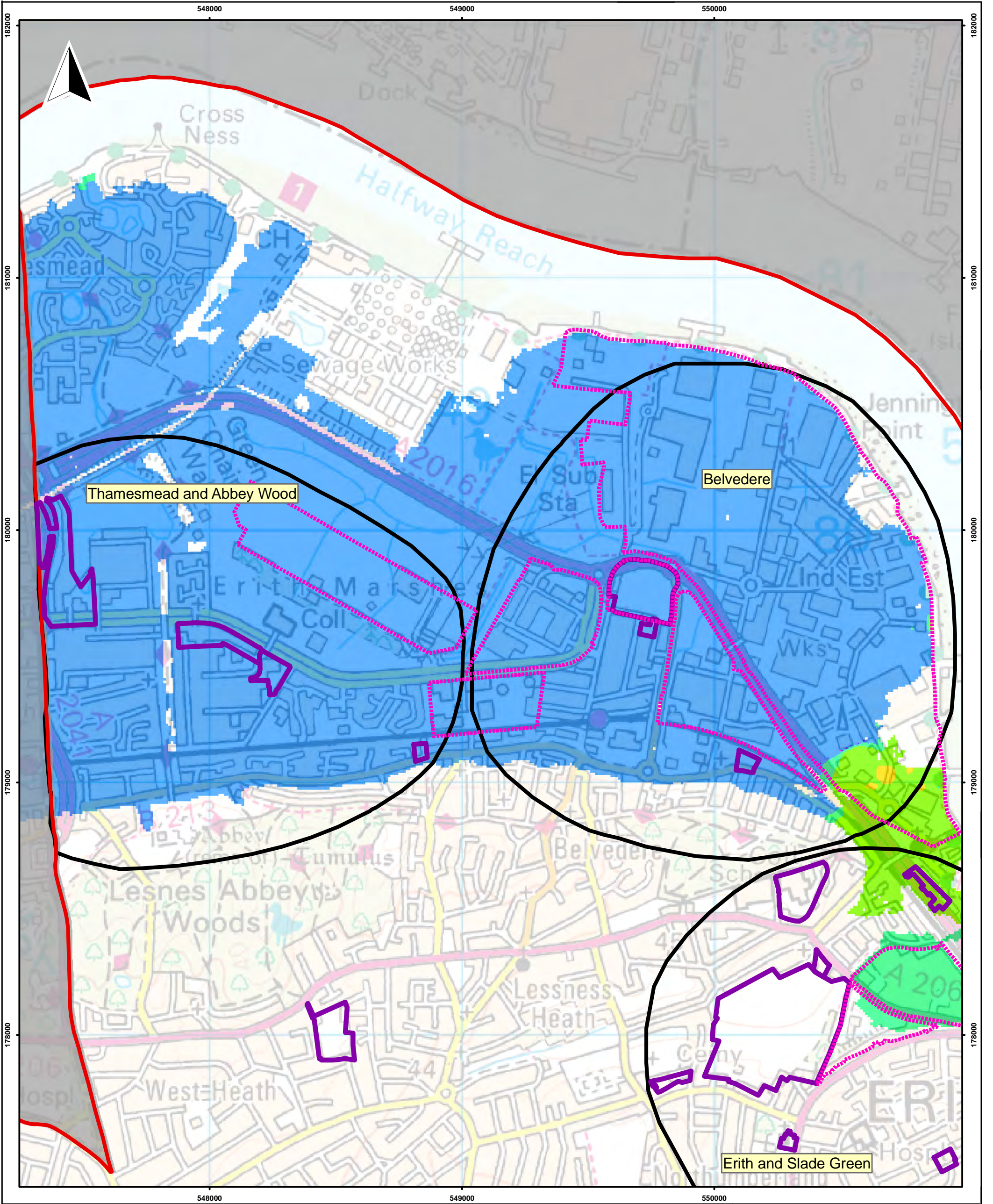
Zone of Potential Rapid Inundation  
See Section 2.2.2 of the Level 2  
SFRA Report for details of this zone

Bexley SFRA  
**Figure B4**  
**Thamesmead & Abbey Wood**  
**and Belvedere - Maximum**  
**Predicted Flood Hazard From**  
**all Breaches in the 1 in 200**  
**Year Tidal Event Plus CC**

July 2010  
23736-A033.mxd RAMPJ

**Entec**





**Key:**

- London Borough of Bexley Boundary
- LDF Growth Areas
- SHLAA Sites
- Employment Sites

**Maximum Water Surface Elevation From all Breaches (1 in 200yr +CC) mAOOD**

0.01 - 3.70	5.31 - 5.79
3.71 - 4.10	5.80 - 6.21
4.11 - 4.40	6.22 - 6.75
4.41 - 4.89	
4.90 - 5.30	

Bexley SFRA  
**Figure B5**  
Thamesmead & Abbey Wood and Belvedere - Maximum Predicted Flood Water Level From all Breaches in the 1 in 200 Year Tidal Event Plus CC

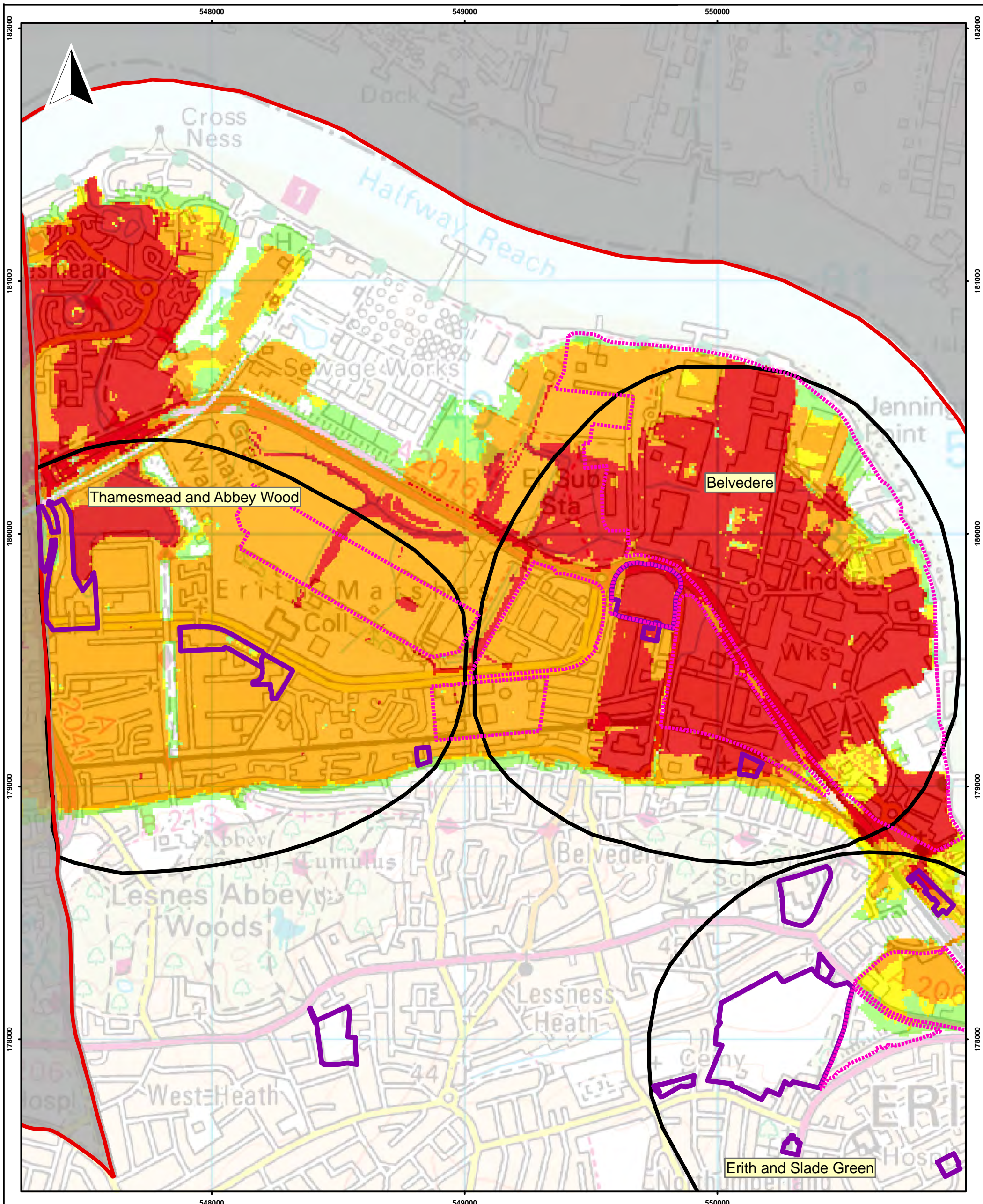
July 2010  
23736-A034.mxd RAMPJ

**Entec**

H:\Projects\HM-255\23000-Projects\23736 - Bexley SFRA\Data\GIS\ESRI\Level2\_projects

Scale: 1:14000 @ A3





**Key:**

- London Borough of Bexley Boundary
- LDF Growth Areas
- SHLAA Sites
- Employment Sites

**Likely Rate of Flooding Onset (Hours)**

- Less than 3 hours
- Less than 6 hours
- Less than 15 hours
- Area converted at maximum extent

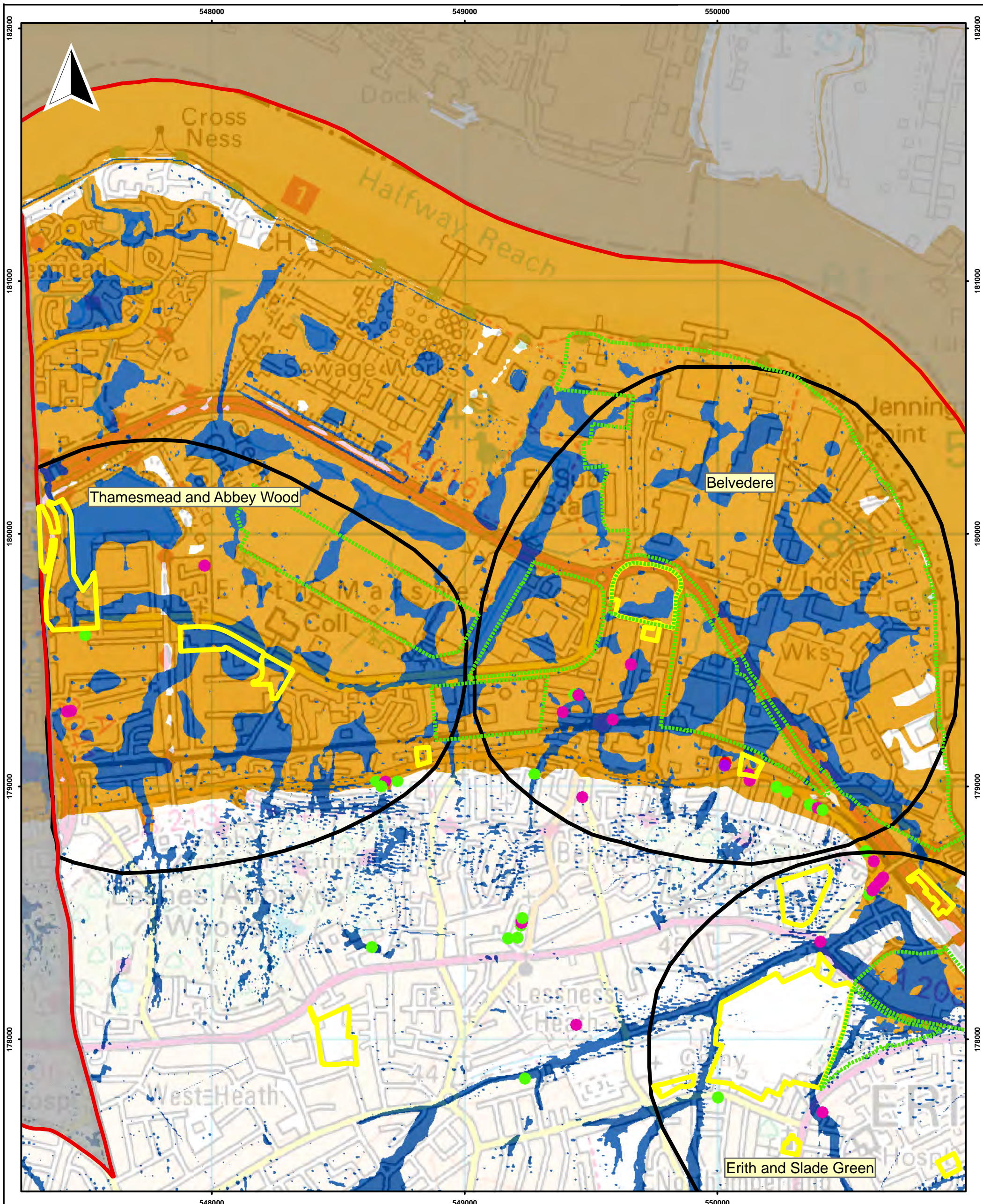
**Bexley SFRA**

**Figure B6**  
**Thamesmead & Abbey Wood**  
**and Belvedere - Combined Likely**  
**Rate of Inundation from all Simulated**  
**Breaches (1 in 200yr Plus CC)**

July 2010  
23736-A036.mxd RAMPJ

**Entec**





**Key:**

- London Borough of Bexley Boundary
- LDF Growth Areas
- SHLAA Sites
- Employment Sites

**Surface Water Flooding Locations Classified by Source**

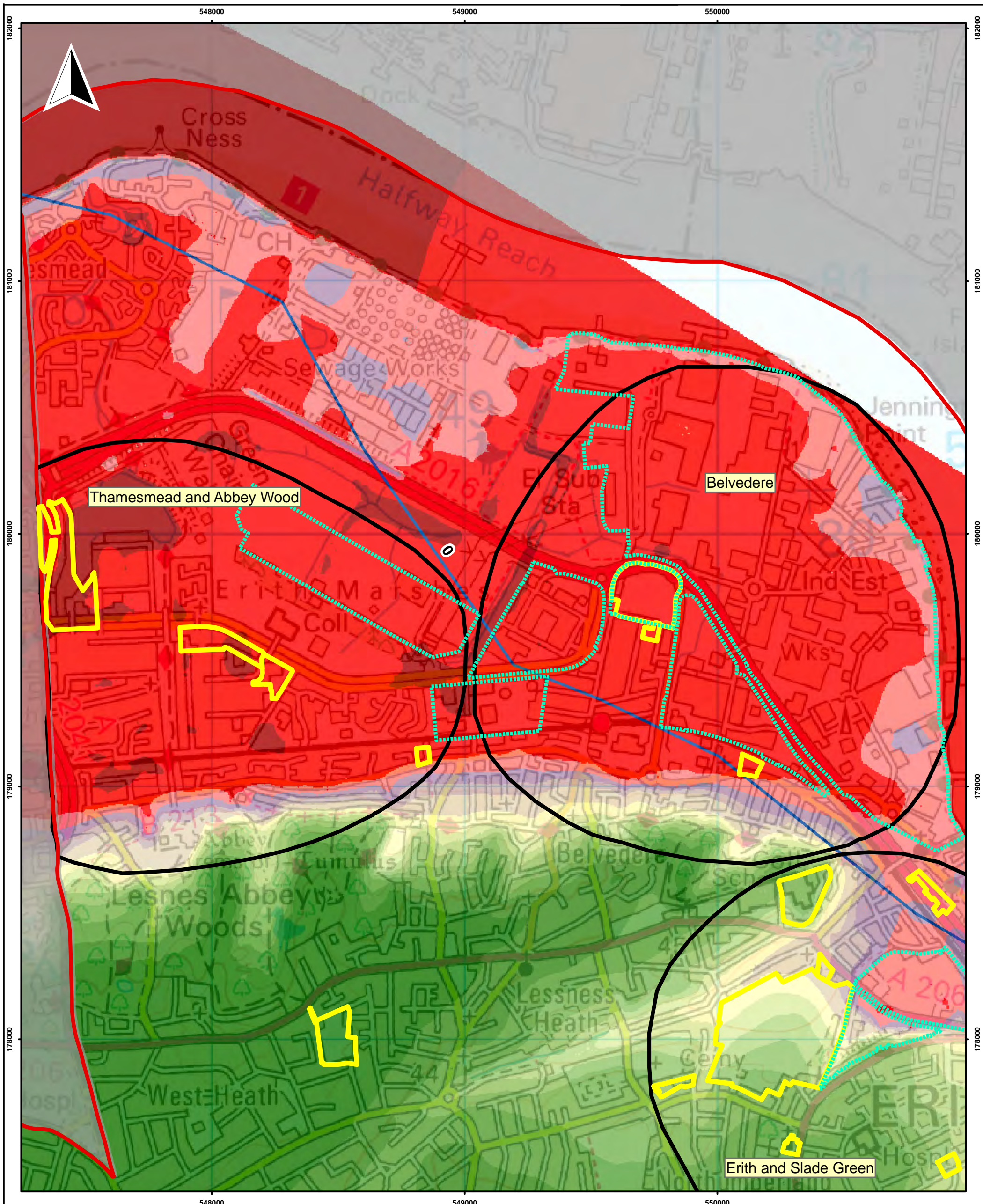
- Foul water
- Surcharge from sewers
- Surface water
- Unknown

(Data Source = London Borough of Bexley)

Environment Agency Flood Zone 3 (September 2008)  
 Potential Surface Water Flow Routes and Ponding Areas (1 in 100 year +CC rainfall event)

Bexley SFRA  
**Figure B7**  
**Thamesmead & Abbey Wood and Belvedere - Incidents of Surface Water Flooding and Modelled areas of Potential Surface Water Flow Routes and Ponding Areas**





**Key:**

- London Borough of Bexley Boundary
- LDF Growth Areas
- SHLAA Sites
- Employment Sites

**Groundwater Head (m below ground)**

-3 - 0	15.01 - 20
0 - 2.5	20.01 - 25
2.51 - 5	25.01 - 30
5.01 - 7.5	30.01 - 35
7.51 - 10	35.01 - 40
10.01 - 15	40.01 - 45
45.01 - 50	
50.01 - 55	

Depth to groundwater head was based on ground elevations provided by 5m SAR topographic data

Groundwater Contours (m) below ground Supplied by EA

0 180 360 540 720 Meters

Scale: 1:14000 @ A3

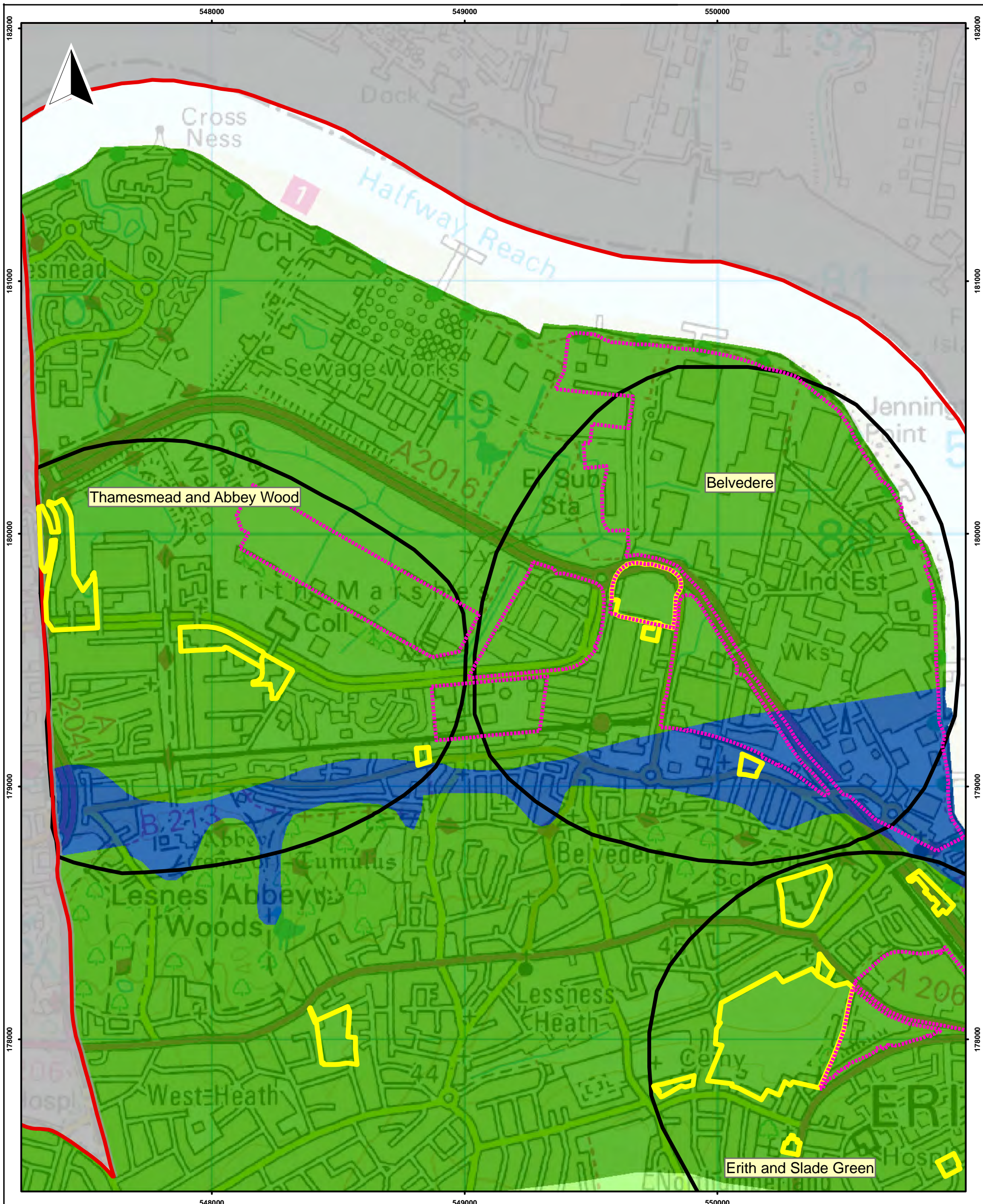
**Bexley SFRA**

**Figure B8**  
**Thamesmead & Abbey Wood and Belvedere - Depth to Groundwater Head (m below ground level)**

July 2010  
23736-A035.mxd RAMPJ

**Entec**





**Key:**

- London Borough of Bexley Boundary
- LDF Growth Areas
- SHLAA Sites
- Employment Sites

**Infiltration Suitability**  
**Suitability of Infiltration SuDS**

- Highly
- Highly with caution - owing to SPZ designation
- Intermediate
- Intermediate with caution - owing to SPZ designation

- Low
- Low with caution - owing to SPZ designation
- No data available

Bexley SFRA

**Figure B9**  
**Thamesmead & Abbey Wood and Belvedere**  
**Soil Infiltration Potential to Inform the Suitability of Infiltration SuDS Techniques**

July 2010  
23736-A038.mxd RAMPJ

H:\Projects\HM-255\23000-Projects\23736 - Bexley SFRA\Data\GIS\ESRI\Level2\_projects

Scale: 1:14000 @ A3