

London Borough of Bexley

Strategic Flood Risk Assessment – Level 2

Appendix E – Level 2 Mapping – Foots Cray Sustainable Growth Area

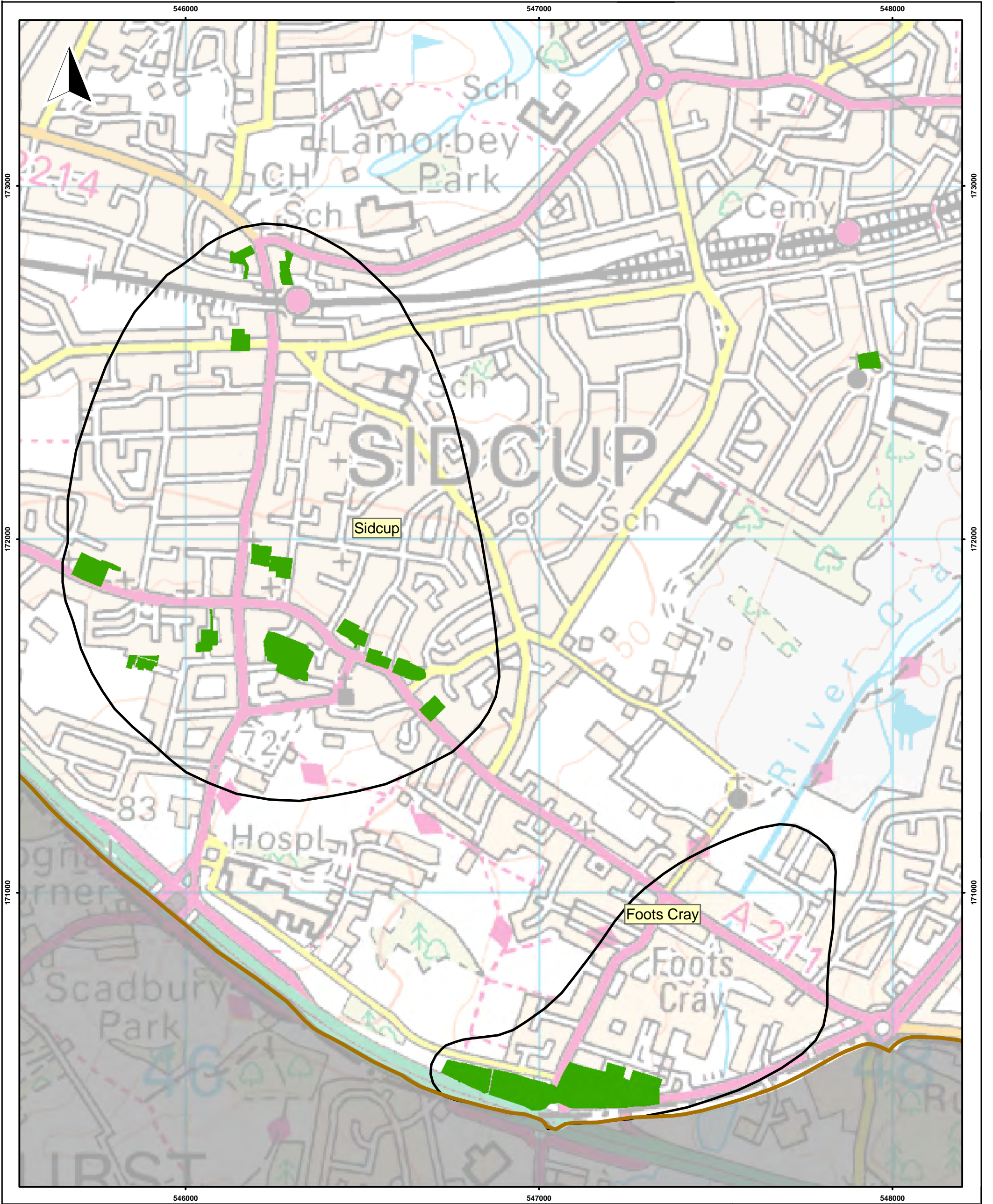
2 June 2011



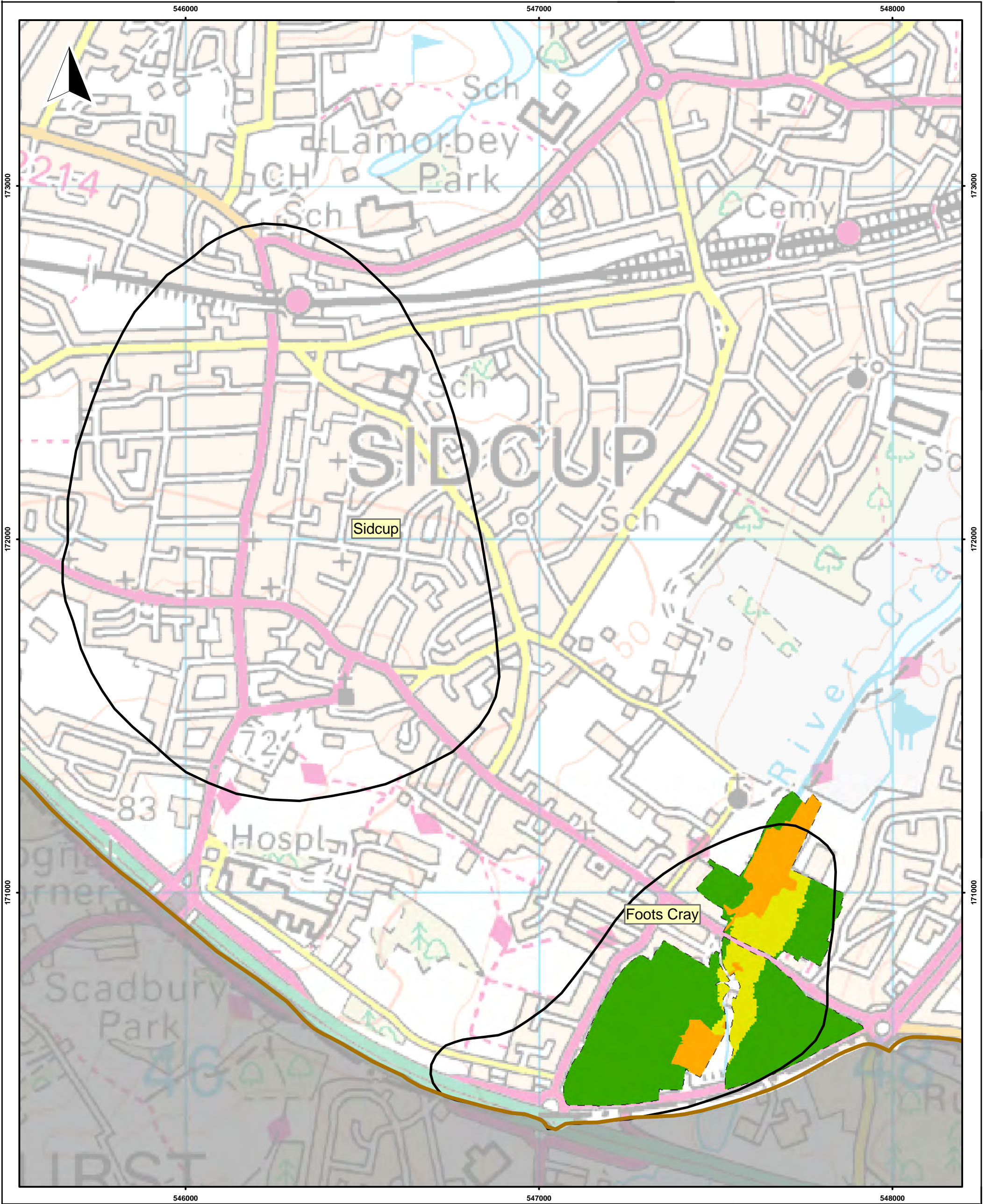
Please note that the modelling on which these maps are based may have been superseded.

Entec

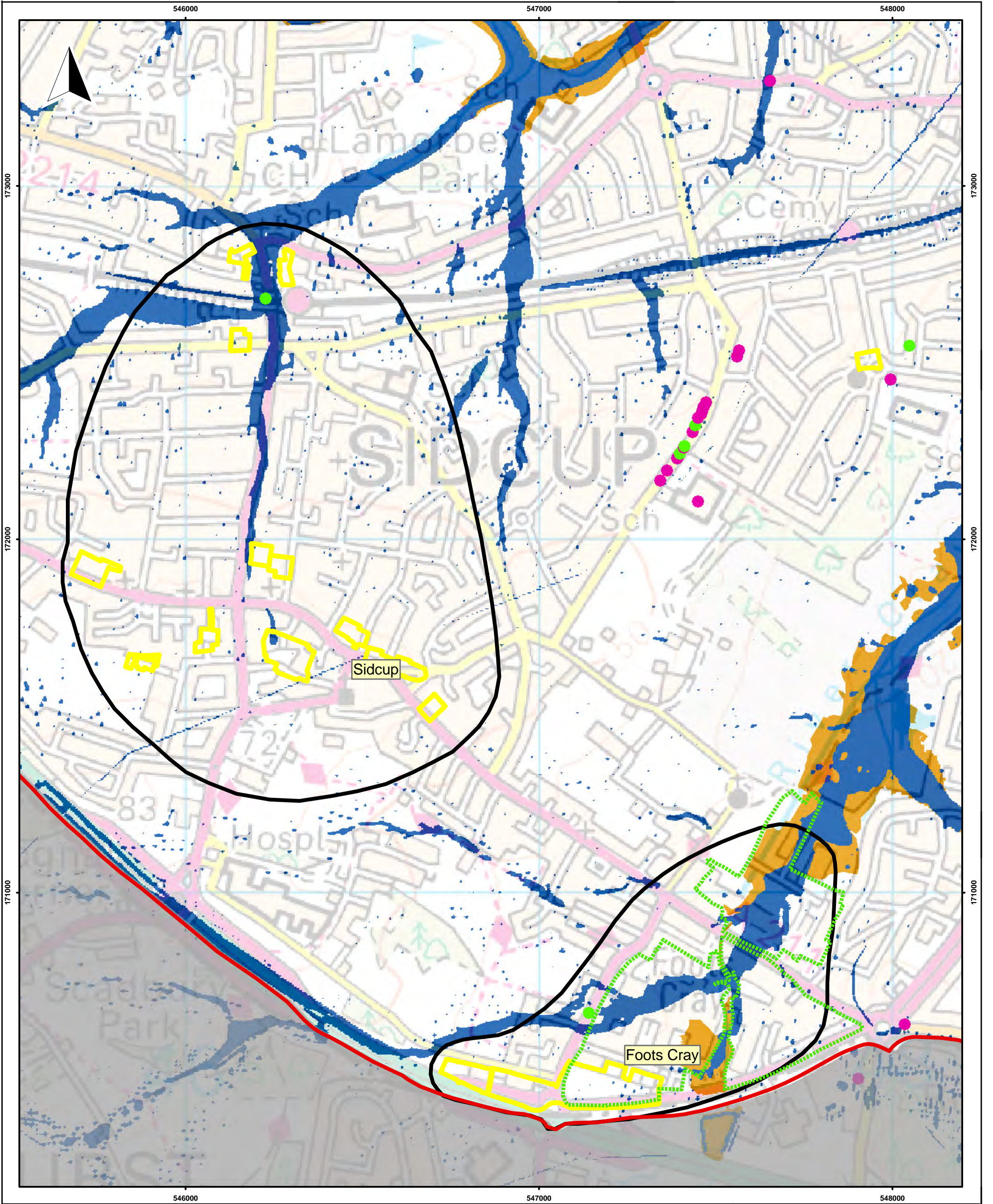
Creating the environment for business



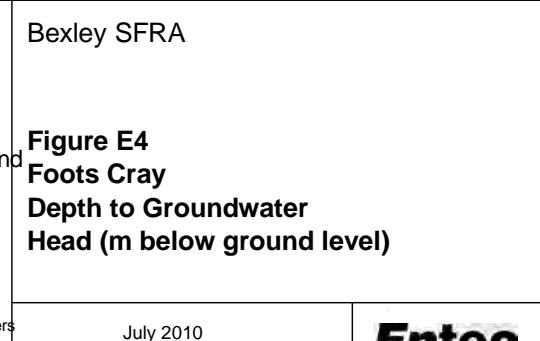
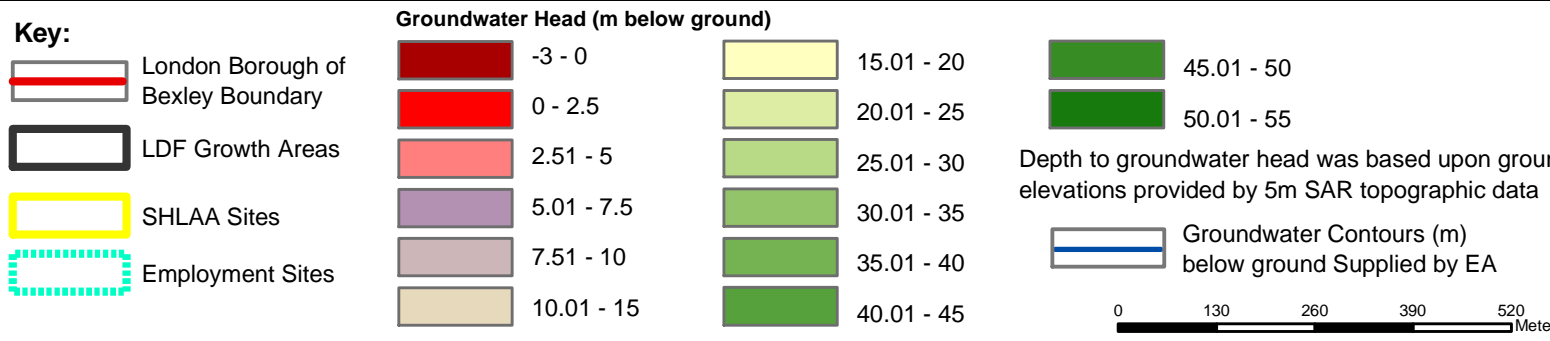
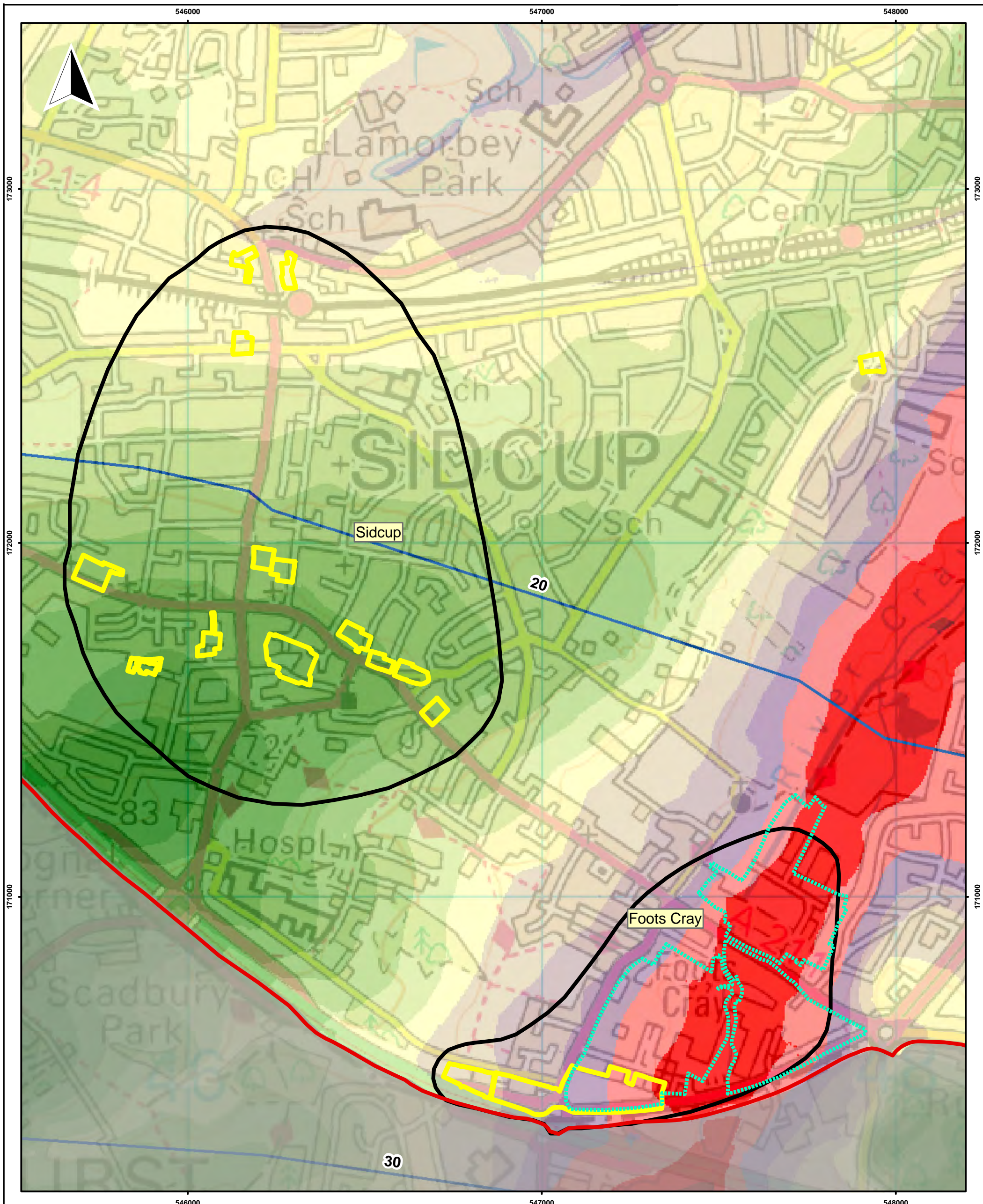
<p>Key: SHLAA Sites - With Flood Zone Classification</p> <p> Flood Zone 3</p> <p> Flood Zone 2</p> <p> Flood Zone 1 (Based on Environment Agency Flood Zones 2008)</p> <p>ISIS-TuFLOW modelling (Crayford Town Centre SFRA 2007)</p> <p> Modelled 1 in 20 year (fluvial+CC) with defences</p>	<p> London Borough of Bexley Boundary</p> <p> LDF Growth Areas</p> <p>0 160 320 480 640 Meters</p> <p>Scale: 1:10000 @ A3</p>	<p>Bexley SFRA</p> <p>Figure E1 Foots Cray Delineation of Flood Risk on SHLAA Sites</p> <p>July 2010 23736-A060.mxd RAMPJ</p> <p>Entec</p>
---	---	--

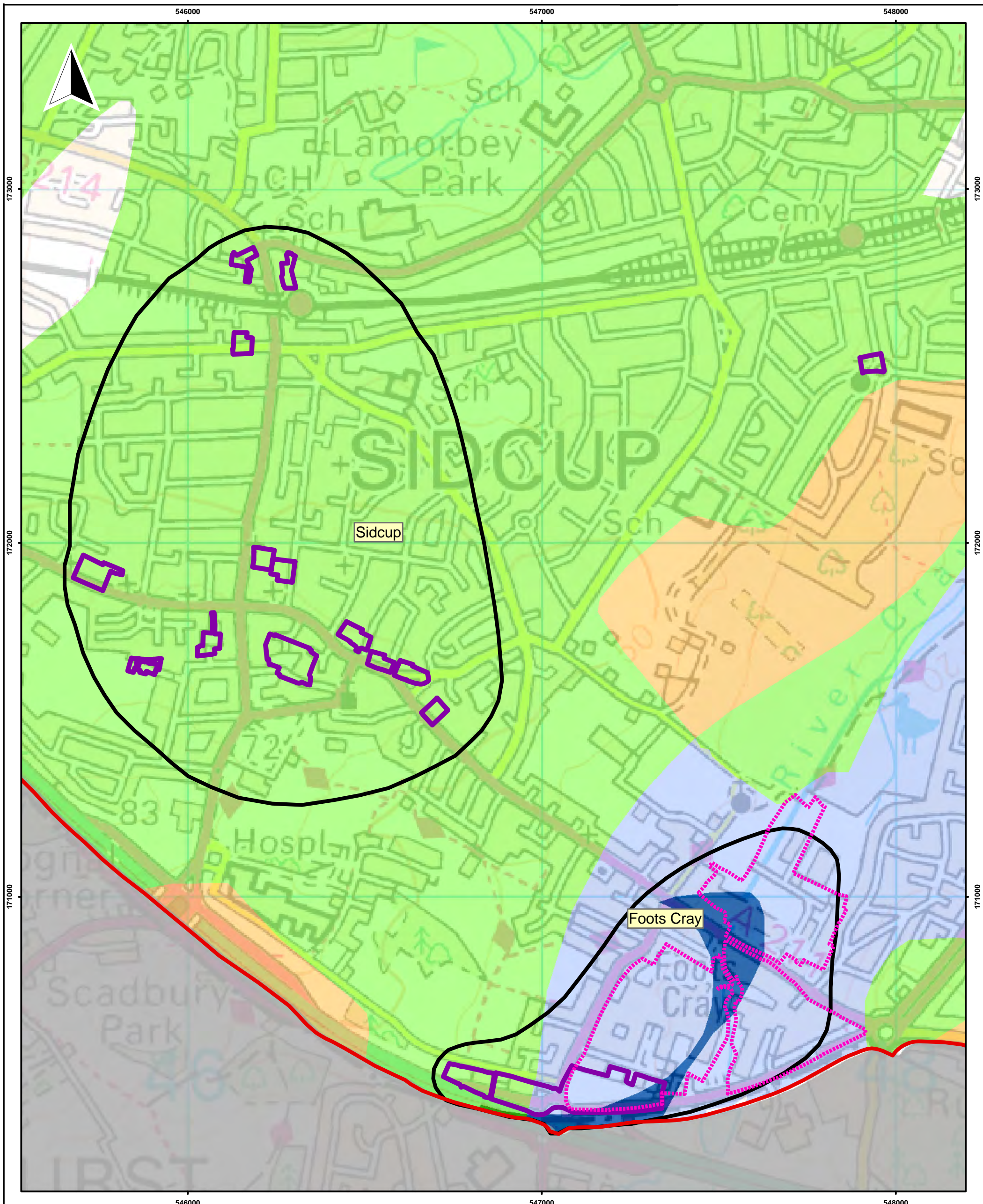


Key: Employment Sites - With Flood Zone Classification <div><div></div> Flood Zone 3</div> <div><div></div> Flood Zone 2</div> <div><div></div> Flood Zone 1 (Based on Environment Agency Flood Zones 2008)</div> <div>ISIS-TuFLOW modelling (Crayford Town Centre SFRA 2007) <div><div></div> Modelled 1 in 20 year (fluvial+CC) with defences</div></div> <div><div></div> Indicates Primary Sites</div>	<div><div></div> London Borough of Bexley Boundary</div> <div><div></div> LDF Growth Areas</div> <div><div>0150300450600</div>Meters Scale: 1:10000 @ A3</div>	Bexley SFRA Figure E2 Footh Cray Delineation of Flood Risk on Employment Sites <div>July 2010 23736-A061.mxd RAMPJ</div> <div>Entec</div>
---	--	--



Key:		Surface Water Flooding Locations Classified by Source		Environment Agency Flood Zone 3 (September 2008)		Bexley SFRA Figure E3 Foots Cray - Incidents of Surface Water Flooding and Modelled areas of Potential Surface Water Flow Routes and Ponding Areas			
London Borough of Bexley Boundary	LDF Growth Areas	SHLAA Sites	Employment Sites	Foul water	Surcharge from sewers		Surface water	Unknown	Potential Surface Water Flow Routes and Ponding Areas (1 in 100 year +CC rainfall event)
(Data Source = London Borough of Bexley)									
<div>H:\Projects\HM-255\23000-Projects\23736 - Bexley SFRA\Data\GIS\ESRI\Level2_projects</div> <div>0 130 260 390 520 Meters</div> <div>Scale: 1:10000 @ A3</div>									





Key:		Infiltration Suitability	
	London Borough of Bexley Boundary		Highly
	LDF Growth Areas		Highly with caution - owing to SPZ designation
	SHLAA Sites		Intermediate
	Employment Sites		Intermediate with caution - owing to SPZ designation
			Low
			Low with caution - owing to SPZ designation
			No data available

H:\Projects\HM-255\23000-Projects\23736 - Bexley SFRA\Data\GIS\ESRI\Level2_projects

Scale: 1:10000 @ A3

0 130 260 390 520 Meters

Bexley SFRA

Figure E5
Footing Cray
Soil Infiltration Potential to Inform the Suitability of Infiltration SuDS Techniques

July 2010
23736-A064.mxd RAMPJ

Entec