

Summer Bexley

Latest news and information from your Council MAGAZINE SUMMER 2020

Keeping
well



SHOP
LOCAL
Shop safe

#BEXLEY
HEROES



What's on - Local information

avante
care & support

'Everyone Matters'

Avante Care & Support provides residential, dementia, day and respite care services

We pride ourselves on delivering the best care, tailored to each person's individual needs, personality, hobbies and interests.

Our Care homes provide a safe and welcoming environment for either long-term permanent care or for day and respite care services.

The health, wellbeing and safety of residents, service users and staff continue to be our main priority during the COVID-19 pandemic and we have in place, robust and comprehensive plans, measures and support to respond to the virus.

We know that during this time people are still looking for residential care or home care services. We are currently taking admissions into our care homes and can respond to a wide range of needs. Please call our care homes or home care service if you are looking for care or need any further help. We will guarantee an assessment of needs; taking the time to listen to what is important to you or your loved one and taking account of any existing information or previous assessment you may have had.

We recognise at this time it is difficult to choose the right home without visiting, to assist with this we can provide a virtual tour around the home which can be arranged with the Home Manager.

We have three care homes in your area:

Parkview, Bexleyheath Tel: 020 8303 7889

Northbourne Court, Sidcup Tel: 020 8269 9840

Riverdale Court, Welling Tel: 020 8317 9067



For more information please contact us on **01795 597400** or visit our website at **www.avantecare.org.uk**

THE ENGINE HOUSE BEXLEY

BEXLEYMEANSBUSINESS
Working together to keep you safe

In the height of the COVID19 pandemic, The Engine House Bexley called upon our contacts within the industry of product development. With our expertise in rapid prototyping, we are now able to produce several high demand PPE items. Our PPE is manufactured entirely in the UK and using only materials sourced within the UK and EU; this opportunity has enabled us to create jobs and support local businesses.

FFP2 Mask

- Water Resistant
- CE Certified
- 4 Layer
- Latex Free Elastic
- Up To 8 Hours Use
- 100% Filtration
- Non-woven Polypropylene

Pre Order Now

Full Face Visor

- Water Resistant
- CE Certified
- Eco Friendly design
- Latex Free Elastic
- Adjustable strap
- Flat Pack Design
- FFP1 Material Class

In High Demand

NOTE: Masks & visors will not completely protect you from COVID19. However, we will help prevent the spread. These products are designed and manufactured in the UK for use within the medical sector with a CE mark certificate reference no. 002/0100.

The Engine House - Bexley/The Engine House - Bexley is a not for profit business, wholly owned by the London borough of Bexley in a business and rapid prototyping centre, in the heart of Bexley.

Minimum order pack of 20 units. 20% Discount on first purchase.

Enquiries:
The Engine House Bexley
2 Veridion Way, Erith, DA18 4AL
020 8320 1000
info@enginehousebexley.co.uk
enginehousebexley.co.uk

London's International Drama School

Rose Bruford College
of Theatre & Performance

Join the next generation

of Actors, Designers, Performers, Stage & Events Managers and Technical Artists

Apply now for September 2020:

- Acting Part-time Course
- Backstage, Digital & Production Arts Degrees
- Theatre Studies (online, FT/PT)

Webinars
Register to talk to our tutors about courses and student life at bruford.ac.uk

bruford.ac.uk
Rose Bruford College, Burnt Oak Lane, Sidcup, Kent, DA15 9DF

Inside your magazine



Welcome

Summer is here, and with it the excitement of the school holidays and more time in the great outdoors.

But this is a summer like no other. We are still in the middle of a pandemic and we must continue to do everything we can to keep ourselves and others safe.

In these pages you will read about how to keep well. There is essential information on how to get Covid-19 tested, and how Test & Trace is helping to reduce the risk of a local outbreak or a 'second wave'.

Please take part in our latest budget survey. Like all local authorities we are working to balance our budget and protect local services. The pandemic has increased our costs and led to a dramatic fall in our income.

Housing is another subject on which local people have strong feelings. Our new housing strategy aims to ensure that we have housing in the borough for different people to enjoy at different stages of their lives.

Again, please share your view with us on this important issue for those of us who live in the borough now – and those who will do in the future.

I hope you find your magazine useful and that you enjoy a safe and sunny summer.

Cllr Teresa O'Neill OBE
Leader of the Council

5 Our new website



11 Keeping safe

13 SILLY SQUAD



15 Supporting local businesses



All our yesterdays 21
Six things 22
Local information 25

What's on 26
Services 29
Local organisations 30

If you would like to know more about the services the Council provides, or would like either a translation of this document or the information in a different format, please call our Customer Contact Centre on 020 8303 7777, quoting reference: 602063/07.20
London Borough of Bexley, Civic Offices, 2 Watling Street, Bexleyheath DA6 7AT
Phone: 020 8303 7777 • Website: www.bexley.gov.uk

• Email: communications@bexley.gov.uk

Distributed free of charge to every property in the borough

Editorial: Bexley Communications Team. Designed and produced by: Bexley Graphics.

London Borough of Bexley does not accept responsibility for goods or services offered by advertisers

Help shape our Housing Strategy



If you currently live, work or study in the London Borough of Bexley - or hope to in the future – the Council would like to hear your views on its new draft Housing Strategy.

It is also keen to hear from local organisations or groups who have an interest in housing and related issues.

The draft Strategy sets out how the Council hopes to secure the homes that local people and the borough need, not just for new residents, but for those in Bexley whose lives have changed.

“Ensuring that we have the right type and quality of housing is central to our borough’s future. We need housing for young people, but also for people who are growing older and whose needs have changed due to their children leaving home, or their lives have entered a new phase.

“We want to ensure a supply of good quality and well-managed new homes and to make sure we make the best use of the homes we already have.”

Council Leader Councillor Teresa O’Neill OBE

The draft Housing Strategy sets out how the Council plans to approach the challenge of supplying the mix of housing that is needed, using its ability to build homes itself and influence development by housing providers and developers.

Housing Strategy → www.bexley.gov.uk/sites/default/files/2020-07/Bexley-Draft-Housing-Strategy-2020-2025.pdf

You can have your say by completing our online survey at → www.surveymonkey.co.uk/r/lbbhousingstrategy by 30 September 2020.

Paper copies of the survey are available in libraries.



All change at the Civic Offices

The safety of visitors and staff will be our priority when we look at reopening Civic Offices.

Although the offices remain closed all our services are still available online.

Council libraries all offer free internet use that can be booked by visiting → <https://arena.yourlondonlibrary.net/web/bexley/home> or calling 020 8303 7777 and asking for Library Services.

If you need to speak to a



someone you can still call us on 020 8303 7777 and ask for the relevant department.

If your query can only be dealt with face to face then you will need to arrange an appointment where you will be asked to wear a face covering and respect the current government guidelines.

→ www.bexley.gov.uk/coronavirus

Council Tax & Benefits

The benefit and Council Tax office reception at Erith Town Hall closed at the start of the coronavirus pandemic and will not be reopening.

If you need information or help with your Council Tax or Council Tax Benefit please make your enquiry online at → www.bexley.gov.uk or call 0345 302 2317.

You can still use the letter box at Erith Hall Town Hall for correspondence. We will return any original documents as quickly as we can.

Have your say on five savings proposals

We are consulting on five savings proposals over the summer.

You can have your say by taking part in our online survey www.surveymonkey.co.uk/r/GTSHR8K

A paper copy of the survey is available in libraries.

The proposals are -

- automated CCTV enforcement of bus lanes
- changing the policy on parking appeals
- increase in cost of garden waste collection service
- increase of parking charges - 20% or 30%
- changes to Children's Centres

Responses must reach us by 30 September 2020.

We are developing a plan to

address our financial challenges and we are continuing to review the impact of the coronavirus pandemic on our forecasts.

As well as increasing spending, the pandemic has also caused a dramatic fall in income, including from Business Rates, commercial rents and other fees and charges.

Based on our latest forecasts, we face a budget gap of more than £10m in 2021/22, increasing to £32m by 2024/25. These figures do not take into consideration the longer-term impact of the pandemic.

Many other savings proposals have already been approved that will have no direct impact on local people.

Keeping up to date

Keep up to date with changes to any of our services on our new website.

Sign up to one our news updates newsletter at

www.bexley.gov.uk/newsupdates

Follow us on Twitter, Facebook and Instagram

Online and on the button

We recently launched our new website at www.bexley.gov.uk.

Our own team of digital experts completely redesigned the site around the needs of local people. The content and navigation have been tested with residents.

As well as a much cleaner, modern look, the site offers the services and information people need more quickly and easily.

The site includes a straightforward way to give feedback at the foot of every page.

The launch is part of wider moves to improve services. An updated telephony system is also being introduced to help those who still need to call the Council.

"Recent months have shown us how comfortable most people are with online services, which are open to all and available at times that suit your lifestyle. And just as with banks and supermarkets, providing services and information online keeps our costs down, meaning we can use more of our resources on frontline services, and less on administration."

Councillor David Leaf, Cabinet Member for Resources

Let us know what you think of the site by using the feedback option at the foot of every page



Planning your journey



Life has become very different since the lockdown. Travel options are not as straightforward.

If you must travel, make sure you follow some simple guidelines –

- ▶ Think carefully about the times, routes and ways you travel. The less people travelling at the same time means more space to stay safe.

- ▶ Public transport – If you have to use public transport, check with the transport operator before you leave home. Allow extra time: travel may take longer because of reduced capacity, or social distancing measures.

- ▶ Face covering – If you are using public transport you should wear a face covering. Details on how to make your own face covering are available at www.gov.uk

- ▶ Walking and cycling – This is the best option if you can do it. It is good for your health and reduces pressure on the road network and public transport system. Please ensure you maintain social distancing while walking or cycling.

journey, remember to wash your hands for at least 20 seconds, or sanitise your hands as soon as possible.

Visiting the shops

Face coverings became mandatory in shops and supermarkets at the end of July. People who do not wear a face covering will face a fine of up to £100. Children under 11 and those with certain disabilities will be exempt.

Shops can refuse entry to anyone without a mask who is not exempt and can call the police.

Cashless parking

We are encouraging users of our pay to park areas to go cashless and sign up to the RingGo app to pay for their parking.



With RingGo, there's no need to display a ticket and you can extend your parking time from your phone even when you're away from your vehicle.

It's quick and easy to register and once you've signed up, you can use RingGo at any location where signs show the logo.

Simply download the app from App Store or get it on Google Play or call 020 3432 4302. A small convenience charge applies.



When you have finished your

Try Thameslink

Many benefit from the borough's transport links to London and Kent, to major airports, the Channel rail tunnel and ports, but the benefits offered by the Thameslink stops at Abbey Wood and Slade Green are less well known.

Thameslink provides a quick and easy route to London from both stations, within the Oyster catchment area. From these stations you can travel on to Luton, Gatwick, Brighton or Cambridge.

Next time you need to make a journey, consider the Thameslink as an alternative to your usual route.

www.thameslinkrailway.com



Doing things differently

We are all trying to handle less cash and use cards or online payments more to reduce the risk of spreading COVID-19.

There aren't many things you cannot pay for, order or sign up to online without ever having to leave home. From banking, to online books and magazines, ancestry searches to grocery shopping, the world is at your fingertips.

Age UK offers information on IT courses that can help you increase your online skills. Call freephone 0800 678 1174 for your nearest Age UK.

The Learning and Enterprise College Bexley also offers a range of IT course for all levels. Visit [➔ www.lecb.ac.uk](https://www.lecb.ac.uk)



Registrar services

Birth registration appointments are now available to book. If your child was born outside Kent or Bexley, you must register your baby with the local authority where the birth took place.

It is still unfortunately not possible to book an appointment to register a death in person. Death registrations are currently being carried out by telephone.

For more information visit [➔ www.kent.gov.uk/births-ceremonies-and-deaths](https://www.kent.gov.uk/births-ceremonies-and-deaths) or call 03000 41 51 51.

Planning a wedding?

If you are starting to think about your 2021/2022 wedding ceremony, please get in contact with our register office team. They can provide costs, information and offer

advice for your special day.

Email

[➔ registerofficebexley@kent.gov.uk](mailto:registerofficebexley@kent.gov.uk) or visit [➔ www.kent.gov.uk/births-ceremonies-and-deaths/weddings-and-civil-partnerships](https://www.kent.gov.uk/births-ceremonies-and-deaths/weddings-and-civil-partnerships)



www.jodihanaganphotography.com

New schools for Bexley

Cleeve Meadow, Sidcup

June marked the completion of work on a new school for children with special educational needs.

The school was made possible by a £3million contribution from the Council, who also managed the project, and government funding.

Cleeve Meadow has been designed to provide specialist education to 120 pupils who have learning disabilities and associated complex needs, meaning that they require to be taught and supported in a special school.

The new building was designed by architects Pozzoni. Existing and new pupils will be welcomed from September 2020.

Cornerstone, Belvedere

Trinitas Academy Trust was formally appointed to run a new SEN Free School in Belvedere last month.

The new school will be built in Halt Robin Road on the site of the former Woodside School and will be called Cornerstone.

The new school should open in September 2021. It will provide specialist education to 90 students aged 11-19 who have social, emotional and mental health needs in the context of their diagnosis of Autistic Spectrum Disorder.

The project will be delivered by the Council on behalf of the Department for Education

The new schools involve nearly £25m of central and local government investment in education in Bexley.

Bexley's volunteers

Since the middle of March, local volunteer and mutual aid groups have been working hard, recruiting and training new volunteers, establishing new ways of working and communicating and providing new services to those most in need.

The Council joined forces with Bexley Voluntary Service Council to set up a new volunteer hub for the borough to help during the pandemic. Within two days more than 600 people had come forward.

Local voluntary mutual aid groups were also set up by local people, to help during the pandemic, including 'Isolation Help Bexley' and both the Sidcup and Belvedere Mutual Aid groups.

As well as the Bexley Foodbank, several independent food banks, including Howbury Friends at Slade Green, have been supporting their community with food distribution, each with the help of local volunteers

Others include the Mosque in Crayford, whose members set up a

helpline, and The Exchange in Erith, who have been working with Orbit Housing Association and the Council to provide hot meals delivered by volunteers.

Cabinet Member for Communities, Cllr Alex Sawyer said: "We know hundreds of Bexley residents have been helping out their neighbours either independently, through local mutual aid groups, the Next Door App, the Bexley Volunteer Hub and local street Whats App groups. I hope that these amazing displays of community spirit will continue long after the current crisis has passed."

Find your local mutual aid group here

➔ <https://covidmutualaid.org/>

by searching 'Bexley'

To find out more about local volunteering opportunities visit

➔ <https://bvsc.co.uk>

For more information on the interfaith forum visit

➔ www.bexleyinterfaithforum.org

We are all in this together. Please remember to check on vulnerable neighbours and offer help if they need it.

More than 1,200 tasks were carried out by volunteers supporting the helpline

1,030 volunteers came forward for the hub

Bexley's faith communities came together and found new ways to offer support



The Mayor of Bexley is calling on residents to nominate local heroes for a special commendation award that recognises exceptional contributions and acts of kindness made during the pandemic.

If you know an individual, group or business that has gone out of their way or been a good neighbour, this is your chance to make sure they get the recognition they deserve.

To nominate fill in the online form at ➔ www.bexley.gov.uk/discover-bexley/Bexley-Heroes-nomination-form

The closing date is 31 October 2020.

To request a form for either of these award schemes call 020 3045 3678. Return your completed nomination to the Mayor's Office, 2 Watling Street Bexleyheath, DA6 7AT



Local Volunteer Sophie –
"I really enjoyed volunteering with Bexley. It was nice to have an opportunity to give a little back. I met some lovely people – albeit from a minimum 2 metres away! I'm really hoping that this is something I can continue.

Civic Recognition Awards

Our annual civic recognition awards scheme for 2021 is now open for nominations.

The awards recognise local people who have devoted years of voluntary service to the community or carried out an act of bravery, as well as organisations or groups doing amazing things in Bexley.

There are three categories -

- ▶ Civic Recognition of Young People - For young people up to age 18
- ▶ Civic Recognition of Voluntary Service by Adults - For people over the age of 18
- ▶ Civic Recognition of Outstanding Achievement

To nominate fill in the online form at

➔ www.bexley.gov.uk/civicawards

The closing date is 18 September 2020.



Back to school

All Bexley schools are now due to reopen to all age groups from September.

Schools in Bexley have been open throughout the pandemic for children of key workers and vulnerable children. Other joined them following the change in Government guidelines in July.

This guidance will remain in place in September to reduce the risk of transmission. Schools are being asked to keep children in class or year group sized 'bubbles' and encourage older children to keep their distance from each other and staff where possible.

They will also be asked to take the usual protective measures, such as regular cleaning and handwashing.

If you have questions or concerns about your school reopening, please visit your own school's website for more information.



Money off your meal

As the Magazine went to print the Government's new 'Eat out to help out' scheme was about to begin. The scheme that runs until Monday 31 August is designed to encourage customers to eat out at restaurants by giving a discount.

You can find participating restaurants at www.tax.service.gov.uk/eat-out-to-help-out/find-a-restaurant or look out for the posters.

Green home scheme

Vouchers worth up to £5,000 will be issued to homeowners in England to make their homes more energy efficient under a new government scheme that launches in September.

As part of the Green Homes Grant scheme, eligible homeowners will be able to use vouchers to help pay for environmentally friendly improvements, such as installing loft, floor and wall insulation, or double-glazing. Home owners will be able to apply for a voucher once the scheme is up and running in September. Sign up to our news e-mail at www.bexley.gov.uk/newsupdates for more information when it becomes available.



Debt advice

The pandemic has meant a change in circumstances for many of us. In some cases this has led to financial difficulties and problems with debt. If you are struggling, please remember that you are not alone. These local organisations can offer help and advice.

- ▶ **Bexley Citizens Advice Bureau** provides free, independent, confidential and impartial advice www.bexleycab.org.uk
- ▶ **Christians Against Poverty** provides a free debt counselling service to everyone.

- ▶ They also offer a free money course and job clubs www.capuk.org
- ▶ **StepChange Debt Charity** provides free debt advice through their telephone debt helpline and online debt remedy tool www.stepchange.org
- ▶ **Shelter** gives practical housing advice and support online, in person and by phone 365 days a year, and can help with everything from mortgage arrears to finding a place to sleep www.shelter.org.uk

Looking after our well-being



If you are worried about coronavirus and how it could affect your life, Mind in Bexley may be able to help.

They have a wellbeing line for anybody in Bexley who is feeling stressed, worried or down and needs somebody to talk to. If you would like to speak to someone please call 0203 912 0048.

Every Mind Matters is an NHS mental health campaign that gives simple and practical advice to help you get a healthier mind and more out of life – from how to deal with stress and anxiety,

to boosting our mood or sleeping better. It will help you spot the signs of common mental health conditions, get personalised practical self-care tips and information on further support. You'll also learn about what you can do to help others.

To find out more go to www.nhs.uk/oneyou/every-mind-matters



Medical appointments

There have been changes to GP appointments over recent months. But it's still important to get help if you need it.

Doctor's appointments

You can contact your GP surgery by -

- visiting their website
- using the NHS App
- calling them

You can order repeat prescriptions online.



Hospitals

Some changes have been made to hospital services but if you're advised to go to hospital please remember -

- Keep going to any appointments you usually have, unless you're told not to
- Some appointments may be online, by phone or by video call
- You may be asked to come to your appointment alone, if you can
- You must wear something that covers your nose and mouth when you go to a hospital

Your hospital will contact you with more information about what you need to do.

Slimming World

Slimming World is offering **12 week free membership of its new 'virtual' weight loss service.**

Members can join a group from home and get support to make healthier food choices and stay in control of healthy lifestyle habits.

To join the scheme you must be:

- ▶ Aged 16+
- ▶ A Bexley resident who is registered with a Bexley GP
- ▶ Have a long-term health condition and BMI 27.5+
- ▶ Or BMI 30 +

Call 01773 307387 to register or visit slimmingworld.co.uk



Healthwatch Bexley survey

Healthwatch Bexley have launched a survey to find out what people think about remote GP, hospital or other NHS appointments.

Since the coronavirus pandemic, many more consultations are being

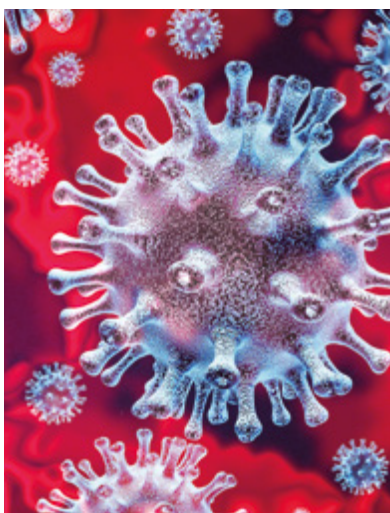
handled remotely. Some people find this change easy, but for others it can be difficult.

Tell Healthwatch what you think Visit

www.healthwatchbexley.co.uk

Keeping you safe

As part of the next stage of the national response to the Covid-19 pandemic, councils have developed Local Outbreak Prevention and Control Plans.



The Bexley plan outlines our readiness to control the spread of coronavirus and quickly manage any local spike in infections.

The plan is a live, working document and has been published as a draft as it is being refined. It will be formally approved by the Bexley Health and Wellbeing Board and published once agreed.

Working with partners, our public health team is developing procedures to protect residents, should there be a

local outbreak in a school, care home, business or other community settings.

A key part of Bexley's plan is around communication and engagement. This means asking people with symptoms to get a test and, via NHS Test and Trace, asking people who've been in close contact with them to self-isolate to prevent them passing it on.

By doing these things, we can prevent a second wave, save lives and protect our NHS.

Play your part Prevent the virus spreading

You can play your part in stopping the spread of the coronavirus in Bexley by continuing to wash your hands, keeping one metre plus apart where possible, wearing a face covering on public transport and in places where it's difficult to social distance, and by continuing to use common sense.

However, there is still a chance you may develop symptoms of Covid-19: a high temperature, a new continuous cough, or a loss or change to your sense of smell or taste. If you experience any of these, you must self-isolate immediately for ten days and

Controlling the virus

The NHS Test and Trace service will play a key role in keeping Bexley safe and preventing a possible second wave of the coronavirus.

But it will only work if the vast majority of people with coronavirus symptoms use the service.

Play your part in controlling the spread of coronavirus by following these steps -

- ▶ If you develop symptoms of Covid-19 follow the rules for self-isolation and book a test.
- ▶ If you test positive, share information about your close recent contacts. One of the NHS Test and Trace team will get in touch with you to explain the next steps.
- ▶ If you are contacted by the Test and Trace team and asked to self-isolate follow their advice.



book a test.

You can book a test at www.nhs.uk/coronavirus or call 119 if you have no internet access.

Your household should also self-isolate for 14 days. In doing so, you will break the chain of infection and reduce the chances of passing the virus on.

We hope that any 'localised lockdown' in Bexley can be avoided if people continue to follow important public health messages and comply with the NHS Test and Trace system.

Thames Estuary plan to unlock growth



In July, Bexley was involved in the launch of the new Thames Estuary Growth Board's plan called 'The Green Blue'.

It sets out plans to attract business and investors, boost connectivity to and in the area, bring clarity to the housing debate, regenerate infrastructure, and create jobs.

The plan is called "The Green Blue" because it signifies good, green growth using the important, blue waterway of the Thames that connects the UK with the rest of the world.

The Thames Estuary is backed by the Government as the UK's biggest growth opportunity. With the potential to create 1.5million jobs and add value of up to £115bn to



the economy, it is key to growth and recovery.

Council Leader Councillor Teresa O'Neill OBE is a member of the Board, which is made up of public and private partners.

The Board is working to increase the amount of freight and number of passengers moved on the river. It is also establishing hydrogen

production, storage and fuelling infrastructure to support a shift to green vessels and support green, land-based transport.

There are currently around 30 projects in development in the Estuary, including transport, infrastructure, leisure and culture.

www.thamesestuary.org.uk

Are you eligible for Pension Credit?

You may be eligible for Pension Credit if you are -

- ▶ a single pensioner on less than £173.75 a week
- ▶ part of a couple on less than £265.20 a week

If you reached State Pension age before 6 April 2016 you may qualify for Savings Credit and could get up to -

- ▶ £13.97 per week if you are a single pensioner
- ▶ or £15.62 per week if you are part of a couple

By claiming Pension Credit you may also be able to get help with your mortgage payments, your Council Tax, fuel bills and healthcare costs.

If you are renting your home and are receiving Pension Credit, you might be able to claim Housing Benefit to help cover your rent.

Even if you're not eligible for Pension Credit, you may still be able to claim other support. For example Attendance Allowance, Carer's Allowance and help with energy costs.

From August 2020 the BBC will only be providing free TV licences to people aged over 75 if they are claiming Pension Credit.

▶ Check to see if you are eligible.

Pension Service helpline
Telephone: 0800 731 0469
Monday to Friday, 9.30am to 6pm

Rent to Buy scheme in Erith

Did you know you could rent a brand new flat from just £730 a month while you save to buy it? Bexley residents have priority for a new London Living Rent 1,2 and 3 bedroom apartments at Orbit's Elliston House development in Erith, due to be completed in November 2020. You may qualify if you have a household income of £26,000 for a one bedroom flat, £36,000 for two bedrooms or £40,000 for three bedrooms.

Email [▶ LondonLiving@orbit.org.uk](mailto:LondonLiving@orbit.org.uk) for more information.



Libraries open for business

All of our libraries have now reopened with Covid-19 restrictions in place.

During lockdown we have seen the numbers of residents using our online library services grow. The services are free and available to library members of all ages. The huge range of online services includes free access to online magazines, papers and books for adults and children.

This year's children's Summer Reading Challenge 'Silly Squad' is also online. Children can sign up now and get reading immediately.

Find out more

Visit www.bexley.gov.uk/libraries for more on the steps the service is taking to carefully reopen, and for information on our full range of online services.



The Reading Agency and Libraries Present

SILLY SQUAD

Summer Reading Challenge 2020

sillysquad.org.uk

Annual Canvass

From July to November, as part of the Annual Canvass, every property in the borough will be contacted to make sure that everyone who is entitled to register to vote has the chance to do so.

Residents will receive an email if they provided an email address. If not, they will receive a canvass letter.

It is against the law not to advise the Council of any changes at a property. Please make sure that you read and follow the instructions in the canvass communication you receive.

If you are already registered, you do not need to re-register. If you are not registered, you will not be able to vote.

Not being registered could also affect your credit rating or the ability to purchase a mobile phone.

Visit www.gov.uk/register-to-vote to find out more.

10 top tips to encourage children to read.

www.gov.uk/government/publications/10-top-tips-to-encourage-children-to-read

Stay scam aware

As Covid-19 appeared, so did more scammers seeking to take advantage.

Initially, we received complaints about in-demand products being sold at inflated prices.

Fake and unsafe products also appeared. Trading Standards at Heathrow Airport seized 6.5 million sub-standard face masks - and some 100,000 facemasks with false paperwork were destined for Bexley. Fake hand sanitisers, branded Andrex and Comfort, were also found in Bexley. To protect yourself, be scam aware -

- don't deal with cold callers at any time
- don't respond to unsolicited emails or texts
- take extra care of vulnerable residents

➔ Report frauds to Action Fraud on 0300 123 2040
Contact Citizens Advice consumer service on 0808 223 1133 for advice.



One of the fake hand sanitisers found in Bexley – the back and front views show different branding.



Join our garden waste service

Bexley's garden waste collection is exclusive to residents in the borough. If you are a frequent gardener, or if you are unable to home compost large amounts of garden waste yourself, the service is ideal for you.

The convenient service costs £45 a year. If you sign up by Direct Debit that is reduced to £40. This works out at £1.80 a collection, or £1.60 a collection if you pay by Direct Debit.

Visit www.bexley.gov.uk/gws



Your food isn't rubbish!

Between us in the UK, we all waste 6.5 million tonnes of food every year, 4.5 million of which is edible. This is enough to fill 38 million wheelie bins!

Saving food means saving money, but look at the bigger picture, too. Reducing food waste is good for the planet, as it helps slow down global warming.

There's nothing like mealtimes to help us get creative and get together with people we love. Saving food does a lot more than just saving money. Every single slice of bread, potato and chicken breast saved makes a difference.

For inspiration on how to use up your leftovers visit

www.lovefoodhatewaste.com/recipes

Home compost offer

If you're interested in purchasing home compost bins, we have teamed up with Get Composting to offer special rates on compost bins, water butts and a whole range of accessories. You can purchase a compost converter from as little as £19 and a range of other discounted composting equipment.

Visit www.getcomposting.com

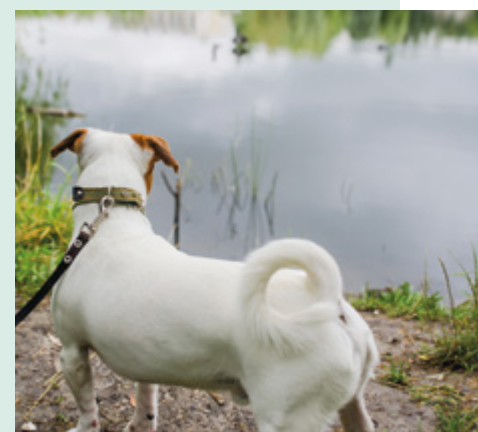


Four ways to keep it great outdoors

Since lockdown measures were relaxed, thousands of people have visited the borough's parks and open spaces. Unfortunately, many have left items behind including takeaway containers, disposable BBQs, cans and bottles that could have been recycled.

1 Please always take your waste and recycling home and dispose of it responsibly, rather than leaving it on the grass or next to already full bins.

2 We would like everyone to enjoy our green spaces. If you are in charge of a dog, you are responsible for controlling its behaviour in public.



3 We ask you not to take dogs into fenced children's play are

4 Please also help to protect our wildlife and remember not to allow your dogs into our lakes and rivers.

Get behind our local businesses

As Covid-19 lockdown restrictions ease on our high streets and shopping parades, we're urging local people to do all they can to help the local economy bounce back stronger than ever.

Our 'Shop Local Shop Safe' campaign aims to get residents to support local traders by reminding them of all the benefits. Not only is it convenient, but you get a more personalised service, as well as some fantastic local offers. Keeping things local can also help protect residents and local shopping areas during the pandemic, because people are more likely to be able to walk or cycle rather than rely on public transport.

During the pandemic the Council has awarded 2,800 grants to businesses to help them cope during lockdown.

To find out more about the support available to businesses please visit

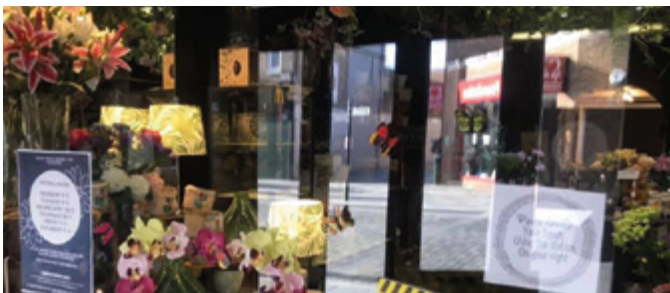
→ www.bexleyforbusiness.co.uk

New Welling
pop up market
every Saturday.
See page 26



Visit
www.greatererith.com
for Erith Town
Centre updates

Local businesses bouncing back



Sweet P the Florist, Sidcup

After a two months closure during lockdown, Sweet P the Florist in Sidcup High Street is open for business again. Thanks to the resilience of its owner, Portia, and the support of its loyal customers, it is busier than ever. The new normal has meant a smaller number of staff, a perspex screen across the front of the shop, so that customers don't have to come all the way in, lots of hand sanitiser and signs reminding people to keep their distance and only touch what they intend to buy. Portia says -

"To begin with the uncertainty meant it was an extremely stressful time but, with the help of government grants, Sidcup Partners Ltd and the Council, who put my bin collections on hold and restarted them for me when I reopened, we are back and busier than ever. My customers have been amazing! I just think everyone has come together a little more after this and it's a nice feeling."

The Kings Arms, Bexleyheath

Since re-opening, popular pub the Kings Arms in Bexleyheath, has been busier than ever.

Landlord Pete Marshall and his team have worked hard to ensure that the Kings Arms is Covid-19 secure while preserving a normal pub environment. Every aspect of the business has been affected, from the layout of the pub to the introduction of an online system to take customers' details and make paperless food menus more accessible on phones.

Other measures that have been put in place to protect customers include a one-way system around the pub, a separate entrance and exit, a new greeting stand and installation of screens and hand sanitiser throughout the premises.

Mr Marshall said: "Our goal is to ensure that when people come into the Kings Arms they feel safe and that the experience is as close to normal as possible. I'm happy to say that we have had nothing but good feedback."



Being a children's social worker

In 2018 Bexley was judged 'outstanding' by Ofsted for the overall effectiveness of its children's social care services. Here two of our children's social workers talk about their roles.

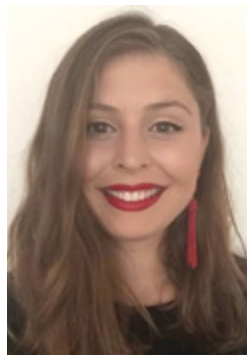


Jade, senior practitioner. February.

"I work in the referral team. The child's wishes and needs are the most important focus.

We talk to families about what is working well and where help is needed. We support them in establishing their own safety plans through conversations, as well as liaising with the wider family network and other professionals working with them. We help build good, positive relationships.

"I love the job because it is varied and rewarding. It can be stressful at times, but even a small win can make a big difference.



Cat, qualified social worker. Joined Bexley as a social work student in 2018 and has been a qualified social worker since October 2019.

"For me, my work is about being able to build relationships and creating opportunities for change.

"I particularly love working with teenagers. It takes time to build up trust, but when you're able to have that relationship where they start to share their story with you, or when

Eight years in children's social work. Joined Bexley in February. "Bexley is a very supportive employer. There are regular supervision meetings, daily check-ins and career development opportunities."

you are able to work through really difficult conversations, it's such a privilege to be a part of.

"If my manager knows I've had to work through something difficult that day, she will never fail to text or call to check in, even if it's after hours."

A typical day as a children's social worker might include -

- ▶ visiting a child at school or in the community
- ▶ introductory home visits
- ▶ liaising with the family's wider support network
- ▶ writing up assessments
- ▶ arranging agency checks
- ▶ training

During the pandemic meetings are mainly being carried out online.

To find out about more about the role and our current vacancies visit

➔ <https://bexleysocialcarecareers.wpcomstaging.com/childrens-services/>

Safeguarding children - report a concern

Over recent months we have all found ourselves facing different types of challenges. But if you have concerns about the safety of child or young person, it is still important that you report them.

Call 020 3045 5440, Monday to Friday 9am to 5pm, or 020 8303 7777 or 020 8303 7171 out of hours (5pm to 9am Monday to Friday and 24-hour cover at weekends).

In an emergency always call **999**.

Family support

Family Lives Bexley offers a free helpline service, for information, advice, guidance and support on any aspect of parenting and family life, including bullying.

The helpline is open 9am to 9pm, Monday to Friday and 10am to 3pm Saturday and Sunday on 0808 800 2222

Visit ➔ www.facebook.com/FamilyLivesBexley/

The Bexley 0-19 Children's Public Health Service supports parents and carers to give their babies, children and young people the best possible start in life.

Health Visitors work with children aged 0 to four years. Find out more about the service here

➔ www.bexley0to19.co.uk

Foster carers

We are always looking to recruit foster carers—people who are able to come forward to offer a spare bedroom and the emotional space to a local child or young person in need. Here, we talk to Lisa, who has fostered for 20 years, about the challenges and rewards of the role.

I started as a ‘connected persons’ foster carer, fostering for 12 years. Then I did a counselling course to understand trauma, and now I’m doing emergency placements, because I’m good in a crisis. “I’m looking after a boy who’s 10. When he came to me, he was petrified. He’d seen his mum in distress; there’s a history of mental health, deprivation and homelessness.” Living with Lisa, he now has a stable routine, which helps him to feel safe and build his confidence. “He loves his mum deeply and his mum loves him deeply,

but sadly she just can’t take care of him at the moment. In the short term I’ve done what I can to improve things for him. “Fostering has made me better at negotiating and listening – skills I’ve needed as I’ve spoken up for the needs of the child in order to get the resources they need. Understanding the difference in cultures has helped me to feel more educated in working with children and young people from different backgrounds. I’m also now better able to reflect on things than I was.



Bexley Foster Carer Lisa with partner Richard.

“It’s important not to judge the parents. Don’t look at what they can’t do, look at what they can do for their children. Fundamentally these parents love their children and want to do what they can for them. You need to remember that the young people you are caring for is somebody else’s child. My aim is to offer the best parenting I can.”

If you, or someone you know, is interested in fostering, please call our friendly team for a chat on 020 3045 4400. You can request our fostering information pack through our online form

➔ www.bexley.gov.uk/fostering

Home schooling

Over the past few months many of us have turned our homes into classrooms. Bexley’s school improvement team have provided these useful links for parents and carers on the support available over the summer holidays.

English – The Literacy Trust have a ‘Family Zone’ on their website which provides ideas and guidance to support reading, writing and language development.

➔ <https://literacytrust.org.uk/family-zone/>

Maths – The National Centre for Excellent for Teaching Maths have set up two Facebook Groups - one primary, one secondary- to help support maths learning at home.

➔ www.ncetm.org.uk/resources/54454

Wellbeing – ‘The Beano’ have produced a timetable to support children’s wellbeing with suggestions of fun daily activities

➔ <https://youngminds.org.uk/resources/school-resources/wellbeing-activity-calendar-and-games/>



Join an online ‘Information Session’ and chat to one of our Foster Carers and a member of the Fostering Placement Team to find out more about fostering.

Upcoming dates include –

20 August – 12noon – 1pm

3 September – 5.30 – 6.30pm

17 September – 12noon – 1pm

Contact the team using the above.

BBNWA during lockdown

Bexley Borough Neighbourhood Watch Association (BBNWA) have continued to work with our dedicated police teams during lockdown. Many members have also been helping isolated and vulnerable people in their areas.

They have also been doing what they can to make residents aware of scam trends and hopefully help to prevent these types of crime.

They hope to continue to harness the increase in neighbourliness and work to increase their membership, to try and prevent a return to the high burglary figures pre-lockdown.

Awards season

Each year the BBNWA award the most deserving Neighbourhood Watch Coordinator with the Violaine Therond award.

This year the voting was so close, it was decided to have two winners: Ray Arnold, from Belvedere and Chas Roberts from Welling.



Ray Arnold, from Belvedere (left) and Chas Roberts from Fairwater Avenue, Welling

Both have been extremely active in their respective roads, keeping neighbours aware of incidents of crime. Not content with volunteering for NHW, Ray also volunteers at the Crossness Engines in Belvedere.

Chas is the Chairman of the Falconwood & Welling Safer Neighbourhoods Policing Team Ward Panel and writes his own newsletter for his road and a neighbouring road.

Visit www.bexleywatch.org.uk or call 020 8284 5537 to get involved.



You're not alone

We're working with the Police and Solace to ensure victims of domestic abuse can access urgent help and do not feel alone.

If you or your family are in immediate danger call the police on 999. If you cannot talk, there is a silent solution: dial 999 and listen to the questions. Respond by coughing or tapping the handset if you can. If prompted press 55.

Solace provides confidential support to anyone who is experiencing domestic abuse and helps them feel safe.

Contact them on 020 3198 4659 or visit the websites below.

www.solacewomensaid.org/coronavirus-and-abuse

www.bexleydomesticabuseservices.org.uk



Modern slavery

Crimestoppers launched their #SlaveryonYourDoorstep campaign to raise awareness of labour exploitation earlier this summer.

As the lockdown eases and businesses reopen, please be aware of the signs of modern slavery and report any suspicions you may have anonymously using the Crimestoppers anonymous online form or free phoneline 0800 555 111.

Things to look out for

- ▶ Signs of injury, abuse and malnourishment
- ▶ Appearing to be under the control and influence of others
- ▶ Living in cramped, dirty, overcrowded accommodation
- ▶ Appearing scared, avoiding eye contact and being untrusting

They're collected very early and/or returned late at night on a regular basis. May be isolated from the local community and their family. Visit

www.crimestoppers-uk.org



Black Lives Matter



The brutal killing of George Floyd caused justifiable shock and outrage. It dominated the news headlines across the world.

Bexley is not Minneapolis, but we understand the anger and fear the events across the Atlantic generated.

We will listen and respond to the feelings of black people living in Bexley.

We will not tolerate racism and we know there is more we can do to address inequalities. We want to do this with the support of as many of you as possible.

We know that most of our residents share our ambition of creating a borough where everybody has an equal opportunity to achieve their potential and live a good life.

We are here to listen to the concerns of our communities. Together we will continue to work to make our borough a place where everyone is welcome, equally valued and shown kindness.

Support for carers

This has not been an easy time for anyone, but it is particularly difficult when you are looking after someone who cannot manage without you, and when some of the usual support services are closed.

Carers' Support (Bexley) offers services including emotional support, counselling, welfare benefits advice and help with making a claim, support at home for the person you care for so that you can have a break, and information about other services available.

You can contact them on 020 8302 8011 or by email at

➔ info@carerssupport.org.

Other local charities offering support include -

Bexley Mencap – who are doing lots on their Facebook page for people with Learning Disabilities and their Carers. Search for ➔ [@bexleymencap](https://www.facebook.com/bexleymencap) on Facebook

MIND in Bexley – offers support to anyone feeling stressed or anxious

➔ www.mindinbexley.org.uk

Crossroads Care South East London offers befriending and breaks from caring, care in the home for adults, as well as children and young people's services. Call 01322 336086 or email ➔ info@ccsel.org

Bexley's Foodbanks

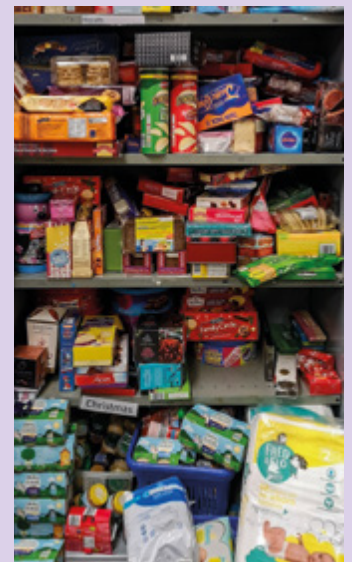
The Bexley foodbank, along with several independent food banks, including Howbury Friends at Slade Green, is a volunteer-led organisation that supports local people.

Following a massive increase in demand during the coronavirus pandemic, foodbanks across Bexley are looking for donations.

If you can help by donating food or money go to

➔ www.bexley.foodbank.org.uk

To donate to Slade Green Food Bank email ➔ sladegreenbiglocal@outlook.com



Become a Parks Volunteer



The Parks Volunteer Services is a new scheme that is currently focusing on litter picking in our local parks.

Volunteers are given full safety advice and litter picking equipment, as well as being guided on the best times and locations for litter picking to tie in with Council collections. They are also free to litter pick at any times which suit them best.

To find out more email

➔ parksandopenspaces@bexley.gov.uk.

New Mayor



The new Mayor - Cllr James Hunt and his wife Christine the Mayoress

Councillor James Hunt, who represents Blackfen & Lamorbey Ward, has been elected as Mayor. His wife, Christine, is Mayoress.

James says: "This is a very important year for the borough and I am keen to help where I can to get our small businesses, pubs and restaurants back on their feet. Our residents want to understand what their new normal will be and it is my ambition to be there with them, even if on occasions, it will be by virtual means."

James will be raising funds to support the activities of Bexley's Looked After Children, as well as Bexley Crossroads and Carers' Support Bexley, alongside other small charities that may request his support as the year progresses.

James has been visiting businesses across the borough and he hopes that you will invite him along to visit you.

He has been inspired by many of our residents, who have reached out across Bexley in support of those who have needed help during the past few months and he is looking forward to hearing many more stories of how Bexley has overcome such difficult and challenging times.

You can contact James using everyday technology, including Facebook, Instagram and Twitter. He also uses Zoom, MS Teams and Skype to meet local groups, who might find it more difficult to get together with him.

James has appointed Councillor Sue Gower MBE to be his Deputy Mayor and Sue's husband, Darren Tobin, to be the Deputy Mayor's Escort.

Online meetings

Shortly after lockdown Council and Committee meetings became online only.

Members of the public can still hear the online meetings and view the meeting papers or presentations, including Planning Committee Meetings, as they take place, or catch up with proceedings online at a later date.

Webcasts of meetings are available at <https://bexley.public-i.tv/core/portal/home>

There is still the same opportunity for interested parties to take part in meetings where this is part of the usual process. You can find out more about how to do this on our website.

www.bexley.gov.uk/democracy

Sign up for our news updates

www.bexley.gov.uk/newsupdates

The war years

Following on from the recent VE Day commemorations, Bexley's Local Studies team have been looking back at how our Bexley forebears coped during the war years.

They were struck by some parallels between those times and our recent situation.

Here are some of the wonderful local archive photographs to remind us, and give us pause for thought.

A training exercise at Erith Hospital in late 1939 – a reminder of the bravery and dedication of our nurses and doctors, both then, and now.



Emergency Hospital at Erith Oct 1939

By the middle of the war, there were certainly no foreign holidays to be had. These local children are enjoying 'Holidays at Home' in Danson Park. No need for social distancing back then.

Danson Lake isn't in the picture. It had been drained, as it was feared it would help the Luftwaffe to navigate their position.



Holidays at home Danson Park June 1943 watching Will Kitlee The Punch and Judy man



Delivering gas masks in pram Sidcup 1939

Masks needed – urgently! From the same year, these Sidcup ladies are delivering gas masks – by pram.

In 1946, after the war, bread rationing was introduced – not a universally popular decision, as you can tell from these pictures of Bexleyheath ladies, queuing for their daily bread.



Bread rationing queues Bexleyheath 1946



www.facebook.com/BexleyArchives



<https://twitter.com/BexleyArchives>

For more information, email the Local Studies Centre – archives@bexley.gov.uk or follow them on Facebook and Twitter, where you'll find lots more features and photographs from bygone Bexley and the war years.

6 ways to exercise differently

1

Explore Bexley's open spaces

There are over 100 parks and open spaces to explore across Bexley, which covers 623 hectares. Spending time outdoors is good for you and can make you feel happier. So why not visit one of our many local spaces for a walk or run?

For information on our parks visit

➔ www.bexley.gov.uk/parks



Download your own orienteering map to explore Danson Park, Foots Cray and other parks at

➔ www.dfok.co.uk/permanent/index.html

For current government guidance on orienteering visit

➔ www.britishorienteering.org.uk/COVID19_Safe_Orienteering

4



Get Active

Get Active is a website which directs you to local support and resources to help your active journey. Get Active share information on outdoor and indoor activities, including live yoga, circuit training and dance classes.

Discover support and resources at

➔ www.getactive.io

5

Garden for health

Digging, raking and mowing can all be particularly effective at burning calories. Along with the physical benefits, a lot of gardening can help you get outside, relax and improve your mental wellbeing. If you don't have a garden, why not request an allotment? Visit

➔ www.bexley.gov.uk/allotments



2

Join the Movement

We are all spending a little more time at home, which is why Sport England has started 'Join the Movement', a campaign to help people get up and get moving while staying indoors. Their

webpage has advice and tips on fun and creative ideas to be active at home. To check out some of these ideas visit the Sport England website - ➔ www.sportengland.org/jointhemovement

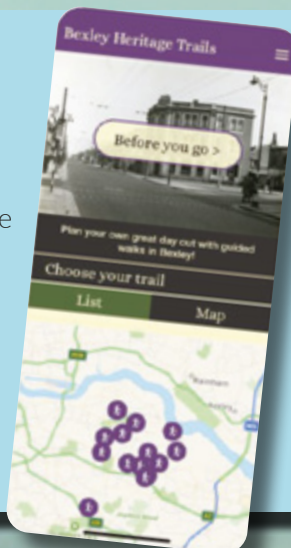


3

Walking fit with BexleyWalks

Walking is simple, free and one of the easiest ways to get more active, lose weight and become healthier. We have a fantastic free

➔ [BexleyWalks app](#) that provides guided walks across Bexley to help you discover hidden treasures while increasing your step count. Download BexleyWalks at the AppStore or Google Play.



6

On your bike

Whether you are cycling to work, to school, to the shops, or just for fun, cycling is an easy way to get more active. If you feel like you need help to get back on your bike visit ➔ www.britishcycling.org.uk for more information.



Now open in Sidcup High Street




Making a difference to the lives of older people and people with disabilities

Inspire's Living Solutions and Mobility Shop with a difference.

We have trained advisers for assisting our customers with appropriate equipment purchase for promoting independence and improving the quality of their lives. Independent Home Assessments available by qualified Occupational Therapy Team

(Terms and Conditions available on request or on www.inspirecommunitytrust.org)



TELEPHONE **020 8300 6038** LOCATION **50 High Street, Sidcup, Kent, DA14 6EH**
www.inspirecommunitytrust.org



Inspire Community Trust (Inspire) is a "User-led" Charitable organisation committed to promoting independence. This is achieved by:

Supporting older people and people with disabilities to make informed choices which enables them to improve and enhance their lives

Providing a range of disability services listed below:

- Information and Advice
- Advocacy and Support with Communication
- Assessment of Daily Living Skills, Training, Rehabilitation
- Moving & Handling Assessments
- Day Activities and Support Services
- Direct Payments Support and Brokerage Service
- Integrated Community Equipment Service (ICES)
- Equipment Demonstration, "Try & Buy" - Living Solutions
- Housing Occupational Therapy
- Transport Advice and Information (Blue Badge, Freedom Pass, Taxicard)
- Physical Disability Registration
- Disability Awareness Training
- Sensory Support for People with Hearing and Sight Difficulties
- Wheelchair Service
- Support with Access to Mainstream Services such as Leisure, Sport, Education etc.
- Community Support/Home Care Service




Working in partnership with London Borough of Bexley and Bexley NHS CCG

TELEPHONE **020 3045 5100** LOCATION **20 Whitehall Lane, Slade Green, DA8 2DH**
www.inspirecommunitytrust.org

VAT No. 292854171
 Company Limited by Guarantee No. 5296168
 Registered Charity No. 1107820



GAROLLA
ROLLER SHUTTER DOORS

Great For:
 Space Saving
 Kerb Appeal
 Ease of Use
0800 468 1982

THERMALLY INSULATED ELECTRIC GARAGE DOORS

Garolla can save a lot of space inside your garage. Rolls up vertically into a box. Takes only 8 inches of headroom! Opens vertically so you can park up close to the door. Remotely open/close the garage even from inside your car.



- Acoustic & Thermal Insulation
- Brush Sealed Rails
- Pay on Completion
- Two Remote Controls
- 18 Colours Available

CE Approved Free Disposal of Old Door!

LIMITED OFFER - was £1354
NOW ONLY £895 INC. VAT & FULL FITTING
 MADE TO MEASURE, CALL US NOW!

Save £459

01483 905 110 07537 149 128
 Phone Lines Open 7 Days a Week

- Offer valid for openings up to 2.6m wide & inc: 2 Remote Keys, 55mm White slats, Internal manual Override -

LONDON BOROUGH OF **BEXLEY**
 Trusted by Bexley residents

www.bexley.gov.uk



Foster in Bexley...

...and change a life

Full support and training
 Competitive rates of pay

Call us **020 3045 4400**
 Visit www.bexley.gov.uk/fostering



Learning & Enterprise College Bexley

Changing futures

Our Ofsted Outcome

As a provider judged as 'GOOD' by Ofsted, we are dedicated to ensuring that your educational journey with us will be enriching and fulfilling and that the skills you gain will give you the confidence to build your future.

Good at Changing Futures!

Access to HE Diploma (Teaching and Education)

The diploma allows students to undertake study related to education and teaching. Students will have the opportunity to develop skills which will enable progression to a range of degree level programmes including a focus on education and teaching and learning.

Log Your Interest

Level 3 Supporting Teaching And Learning In Schools

This course incorporates knowledge and skills and is designed for people who already work or volunteer in a position that supports teaching and learning in schools, colleges, universities or the community. This course is a progression route from a Level 2 qualification in a similar area of study (e.g. childcare or learning support).

Book IA & Enrolment Online

GCSE English & Maths

Do your English and maths skills stop you getting where you need to be?
Would you like to get into employment or get a better paid job?
Would you like to feel confident to help your children with their homework?

Book IA & Enrolment Online

Initial Assessment (IA) & Enrolment

Courses start in September 2020 and you will need to do an initial assessment. We are holding initial assessment and enrolment days for these courses between the 27th August and the 12th September 2020.

Learn With Us!

Log Your Interest Email: logmyinterest@lecb.ac.uk

Check out our website for many more adult education courses and online enrolments.

 **020 3045 5176**

 **www.lecb.ac.uk**



Council meetings

These meetings will be webcast and available at www.bexley.public-i.tv.

A full calendar of meetings is published on the Council's website at www.bexley.gov.uk/meetings

Agendas, reports and information on each of the Committees, including Membership, are also available online.

Council meetings

Planning Committee –

17 September, 7.30pm

Public Cabinet –

13 October, 7.30pm

Planning Committee –

22 October, 7.30pm

Council –

4 November, 7.30pm



LOCAL MPS

Rt Hon James Brokenshire, MP for Old Bexley and Sidcup

Surgeries are by appointment only and can be made by calling the MP's office on 020 7219 8400.

To contact James Brokenshire MP Write to: House of Commons, Westminster, London, SW1A 0AA Email: james.brokenshire.mp@parliament.uk Telephone: 020 7219 8400

Rt Hon Sir David Evennett, MP for Bexleyheath and Crayford

Surgeries are held on the first and third Friday of the month, except in August. These take place

at 17 Church Road, Bexleyheath DA7 4DD between 4pm and 6pm. No appointment is necessary, but please do ring 020 7219 8403 in advance to discuss your case when possible.

To contact Sir David Evennett MP Write to: House of Commons, Westminster, London, SW1A 0AA Email: david.evennett.mp@parliament.uk

Telephone: 020 7219 8403

Fax: 020 7219 2163

www.davidevennett.com

Twitter: @davidevennett

Facebook:

fb.com/DavidAEvennett

Abena Oppong Asare, MP for Thamesmead and Erith

To contact Abena Oppong Asare MP - Write to: House of Commons, London SW1A 0AA, Email: abena.oppongasare.mp@parliament.uk Telephone - 020 7219 3000

London Assembly Member

Gareth Bacon AM (Bexley & Bromley)

To contact Gareth Bacon write to: Gareth Bacon AM, Greater London Authority, City Hall, The Queen's Walk, London SE1 2AA, call: 020 7983 6571, or E-mail: gareth.bacon@london.gov.uk

YOUR COUNCILLORS

The London Borough of Bexley is divided into 17 wards and has 45 councillors.

To find out which ward you live in, or for up-to-date details of how to contact your local Councillors or members of the Council's Cabinet, please visit www.bexley.gov.uk or call 020 8303 7777

➔ You can now search for the names of your local Ward Councillors on the Council's website using your home post code.

Visit <http://democracy.bexley.gov.uk/mgFindMember.aspx>



www.bexley.gov.uk

August Bank Holiday

Waste & Recycling arrangements

There will be no collection on Monday 31 August. All collections have been revised as follows -

Normal collection date	Revised collection date
Monday 31 Aug	Tuesday 1 Sept
Tuesday 1 Sept	Wednesday 2 Sept
Wednesday 2 Sept	Thursday 3 Sept
Thursday 3 Sept	Friday 4 Sept
Friday 4 Sep	Saturday 5 Sept

Normal arrangements resume Monday 7 September

All waste and recycling collections during the week commencing 31 August will be one day later than normal.

The Council's **Reuse and Recycling Centres** at Thames Road, Crayford and Maidstone Road, Foots Cray, will be open 7.30am to 4pm. Please note Fooths Cray is closed on Wednesdays. Traffic management in place visit www.bexley.gov.uk/recyclingcentres

Our mini recycling centres throughout the borough are particularly busy over the holiday periods. If the banks are full please take your recycling home. You may be fined if waste or recycling is fly tipped around the banks.

Please place your waste and recycling out for collection at the front edge of your property at 6am. If your waste/recycling remains uncollected, please report it at www.bexley.gov.uk/online

Parking arrangements P

If you are looking for a place to park over the Bank Holiday period, please be aware that parking restrictions may still apply.

Date	Parking restrictions	On-street paid for parking bays and permit bays	All Council operated car parks
31 August 2020	Normal restrictions apply	Free	Free

Council operated car parks will be open on bank holidays. Parking is free in these car parks and on-street paid for parking bays on bank holidays, however, all other car park terms and conditions still apply.

For more detailed information on parking throughout the borough, visit: www.bexley.gov.uk/parking

As Government restrictions relax, there may be an opportunity to reopen some of the sites that would usually hold events over the summer.

Sign up to our 'what's on' email newsletter at www.bexley.gov.uk/newsupdates

The below are just a sample of some local websites that may feature upcoming events as they start again.

www.bexley.gov.uk/libraries

www.facebook.com/DansonAdventure

www.hallplace.org.uk

www.leisurecentre.com

www.theexchangeerith.com/events

www.nationaltrust.org.uk/red-house

www.crossness.org.uk

www.greatererith.com/events

www.edwardalderton.org

www.playhouse.org.uk

www.thegwt.org.uk

www.facebook.com/helloblackfen

www.facebook.com/SidcupPartners

www.facebook.com/BexleyheathTown

www.facebook.com/pg/progressivewelling

www.thamesmeadnow.org.uk

The Red Robins Club Every Thursday

11am to 12.30pm

Emmanuel Church, Hadlow Road, Sidcup or via Zoom
Singing group for people living with stroke and Parkinson's and their carers
£4 a week plus £2 for a Carer

07900 205 862

www.redrobinsclub.com

Crayford Manor House Historical Society Saturday 10 October

"Kent and the Quest to Make British Silk" Dr. Ben Marsh

The Baker Trust Hall, Maxim Road, Crayford DA14BG at 7pm for 7.30pm.

Non-members are welcome to attend lectures at a fee of £4 per lecture

Contact janet.hearn-gillham@ntlworld.com or 01322.551279

Virtual Bexley Family Eco Festival

Saturday 17 October

Find out what is going on in the Bexley community, the environment and health and wellbeing.

Features include EcoTalks, video eco footage with live chats, demos consisting of upcycling with common household items, virtual stalls partnered by the Children's University, live entertainment and lots more! Visit www.bexleyecofest.co.uk to register your interest

Jams Owls

Friday,
Saturday
and Sunday

10am –
3.30pm

Hall Place, Bourne Road
www.facebook.com/Jamsowls



Lesnes Abbey Summer Family Workshops Summer Crafts and Outdoor Story Trail 25 August

10am – Noon,
12.30pm – 2.30pm,
3pm – 5pm

5 years – 12 years
£5 a child

Go on a story trail to find out about the magical Green Man who lives in Lesnes Abbey Woods. On your return from your woodland adventure, create and decorate your own clay Green Man face to take away.



Summer Crafts and Activity Trail 26 August

10am – Noon, 12.30pm
– 2.30pm, 3pm – 5pm
5 years – 12 years

£5 a child

Create your own animal mask to roam free whilst searching for clues on the Lesnes Abbey Woodland Activity Trail. You can also make your own dream catcher to hang in your garden or bedroom.

Fossil Digging 27 August

10am – Noon, 12.30pm
– 2.30pm, 3pm – 5pm
5 years – 12 years

£5 a child

Ever wanted to go on a fossil dig. Now is your chance! Come to Lesnes Abbey Woods Fossil Pit for the opportunity to find sharks teeth and other exciting finds.



Kite Making 28 August

10am – Noon, 12.30pm
– 2.30pm, 3pm – 5pm
5 years – 12 years

£5 a child

Take to the skies! Learn to build and decorate your own kite and weather permitting, fly them in beautiful Lesnes Abbey Park. All materials provided. Please note parents or carers will need to attend any booked Family Workshop sessions.

Please bring a picnic blanket. For booking and more information please go to:- www.lesnesabbeyevents@eventbrite.com

Bexley SNAP

Summer activities for disabled children and young people, adhering to the current Government guidelines.

www.bexleysnap.org.uk/pages/whats-going-on

Special Needs and Disabilities – workshops

Webinars, information and advice sessions for parents, carers and families www.bexleylocaloffer.uk/Training

Hall Place and Garden Farmers Market

The market reopened this month and will be held on the first Sunday of each month between **10am and 2pm** in the Courtyard area outside the Visitor Centre



New Welling Pop Up market

Organised by the Welling Town Business Associates, local events company CC Events with support from the London Borough of Bexley. A small pop-up market at Bellegrove Road in Welling outside Iceland every Saturday from **9.30am – 4.30pm** until the end of October.

Crossness Pumping Station

Now open

Pre-book tickets only
Visitors will be able to explore the Engine House and Museum, as well as the Railway, the Valve House, Fitting Shop and gardens. Some restrictions in place www.crossness.org.uk

Danson Lake

Fishing has reopened on Danson Lake. You must buy a ticket beforehand. Tickets cost £10 for adults. Over 65's & under 18's £5.50 concession rate. Tickets can be purchased lakeside. Contactless payment only. Email watersports@bexley.gov.uk

The Bookstore, Erith

The Bookstore is part of The Exchange project at Erith's Old Library. The Bookstore is holding regular BBQs and special events in August and plans to reintroduce their regular programme soon. www.theexchangeerith.com/about-bookstore



Please remember to check with the event venue before leaving.

Online updates  www.bexley.gov.uk/events  [@whatsoninbexley](https://twitter.com/whatsoninbexley)



HERE FOR YOU

Video calls with loved ones, a relaxing stroll in the garden, or having a stretch in an exercise class are just some of the things residents have enjoyed, and continue to enjoy, at Smyth Lodge care home. Add to that delicious home cooked food from our in-house chef, tailored care delivered by our fully trained and experienced team, and amazing activities, and you can see why we're the ideal choice.

If you're considering care for yourself or a loved one, we're here for you.

To arrange a virtual tour or one-to-one video chat, please call **020 3930 1428** or email maxim.davys@careuk.com

Smyth Lodge care home
2 Frogal Avenue, Sidcup Kent DA14 6LF
careuk.com/smyth-lodge



We care about...

...your wellbeing - We believe there should be no barriers with older age and our range of well-being packages, such as cinema visits, lunch out, or pursuing a hobby ensures everything is possible. We provide services that support you to live an independent lifestyle and be able to continue to make your own choices and meet your aspirations, whatever they may be!

...your needs - Our kind and dedicated care staff are there to assist you with your daily living, suited around your needs. We can provide care to you at home in a number of ways, for example personal care, companionship, cooking, housekeeping, shopping, social support or assistance with medication.

...you

We know that during this time people are still looking for care. We are continuing to offer Home Care and Wellbeing Support to new clients and can respond to a wide range of needs. Please call our Home Care and Wellbeing Support team if you are looking for care or need any further help. We will guarantee an assessment of your needs; taking the time to listen to what is important to you or your loved one and taking account of any existing information or previous assessment you may have had.

All of our Home Care and Wellbeing Support care staff are supplied with PPE in line with government guidance. Staff follow strict hygiene and infection control practices and work with families to risk assess each care package before the care service begins.



For more information on our Home Care and Wellbeing Support please call us on **01322 318110** or visit **avantecare.org.uk**

avante
care & support
'Everyone Matters'



Independent living, residential and dementia care home

Proven quality of care

At Sunrise of Frognal we put our residents first, providing personalised care that focuses on each individual's quality of life. And while these are undoubtedly difficult times, the physical and mental wellbeing and safety of those in our care continues to be at the heart of everything we do.

With a CQC rating of Good or Outstanding in 92% of our homes and a top 20 ranking from carehome.co.uk, you can be confident about the levels of care we provide.

If you need support and guidance to find the right independent living, residential, dementia or palliative care for yourself or a loved one, please get in touch.

Call Tanya Riding on 020 8106 1899 or visit **SunriseFrognal.co.uk** for more details.

Sunrise of Frognal
Frognal Avenue,
Sidcup DA14 6LF



www.bexley.gov.uk

Council news via email newsletters at www.bexley.gov.uk/newsupdates
Register to vote at www.gov.uk/register-to-vote

Useful Council numbers

- Automated payments – 020 3045 5200

- Adoption and Fostering - 0800 783 7699

- Bexley Local Offer - Special Educational Needs and Disability Support for 0-25 year olds - 020 3045 5677

- Bexley Magazine - 020 8303 7777 and ask for Communications

- Births, deaths and marriages - 03000 415252
registerofficebexley@kent.gov.uk

- Council Tax & Housing Benefits – 0345 302 2317

- Emergency Out of Hours Service - 020 8303 7777 / 020 8303 7171

- Home Library Service – 020 3045 4565

- Housing advice - 020 3045 3400

- Temporary Accommodation – 020 3045 3155/ 020 3045 3156

- Parking Services - 020 3045 3000

- Adults Social Services - Residential care – 020 3045 4900

How do I?

- Contact the police when it is not an emergency on 101 or 0300 123 1212

- Report a gas leak - 0800 111 999

- Get health advice and reassurance -111 www.nhsdirect.nhs.uk
- Report a leak or burst pipe to Thames Water - 0800 714 614 (24 hour leakline) or #tweetaleak to @thameswater

Other useful contacts

- Domestic Violence – 0808 2000 247

- Job centre plus – 0345 604 3719
- Resources Plus - 020 3045 3800

- Citizens Advice Bureaux – 01322 517150

- Age UK information and advice – 0800 678 1174
- For other enquires call 0800 169 8787

- Bexley Voluntary Service Council – 01322 524682

- Bexley Foodbank - 07932 431350

For all other Council services please call our automated switchboard on 020 8303 7777 to request the department you require

100 + services online

Seven days a week + 24 hours a day | Apply - Pay - Find - Report

Worried about a child? Call 020 8303 7777 and ask for Safeguarding Children's Services. In an emergency always call 999.

W. Uden & Sons

The Independent Family Owned Funeral Directors
— Established 1881 —



Bexleyheath and Sidcup's Finest Family Funeral Directors

Serving families in the local communities of South East London and Kent for over 135 Years.

Please compare our services, prices and vehicles.

Bexleyheath - 020 8303 1279 *or* **Sidcup** - 020 8300 2002

Please do not hesitate to give us a call, if only for some friendly advice.

Branches also at:

Eltham | Petts Wood | Camberwell | Biggin Hill | Dulwich

wuden.com



local organisations

To add your organisation to this list, or to update your contact details please e-mail communications@bexley.gov.uk or telephone 020 8303 7777 and ask for Communications

Academy Photographic Group
07976 760488

Academy - United Judo Bexleyhealth
www.unitedjudo.com

Active Horizons Youth
07833 477651/020 8310 5481

Adult Community Art Lessons
@CleevePark
www.sandiecamiilleri.wixsite.com/artlab
07931 824110

Age UK Bexley
020 8300 0883

Air Training Corps (Youth)
Welling Sqdn - 020 8303 7379
Bexleyhealth Sqdn - 01322 559056
Sidcup Sqdn - 020 8309 9926
Erith Sqdn - 01322 340749

Alzheimer's Society
Bexley Branch - 01322 524950/ 559308
Association of Bexley Charities' 78
www.bexleych.wix.com/bexley-charities-78

Assyrian Community of Kent
01322 335479

Avante Community Support: Homecare
01322 344 980
107 (Bexleyhealth) Army Cadet Force
07756 775294

Advocacy for All
0345 310 1812

Barnehurst Yoga Club
0771 222 6261

Barnehurst & Ivor Thomas
Pool League
davidleeds452@btinternet.com

Belvedere Art Group
01322 556876

Belvedere Over 50s Keep Fit
0208 311 5550

Belvedere Social Bowls Club
01322 435 149

Bexley Borough Mummies
07572 473 272

Belvedere Community Forum
and Centre
020 8311 5550

Bexley Accessible Transport Scheme
01322 311333

Bexley Active Retirement Club
020 8303 9675

Bexley African Caribbean
Community Association (BACCA)
07946 497 731

Bexley Archaeological Group
020 8300 1752

Bexley Art Group
01322 430681

Bexley Arts Trust
020 8303 8177

Bexley Bards Story Tellers
0771 222 6261

Bexley visually impaired bowls club
020 8304 8409

Bexley Borough Pensioners Forum
01322 527097

Bexley Boys & Girls Hall
020 8858 5123

Bexley Centre for the Unemployed
020 8301 3187

Bexley Churches Housing Assoc. Ltd
020 3866 5999

Bexley Civic Society
secretary@bexleycivicsociety.org.uk

Bexley Coin Club
0208 303 0510

Bexley Community Library Art Club
01322 836303/07446 480619

Bexley Cricket Club
steventhomas.crawley@openreach.co.uk

Bexley Croquet Club
020 8300 3172 / 01322 525975

Bexley & District Cats Protection
07880 471333

Bexley & Sidcup Lions Club
07790 279683

Bexley Deaf Centre
01322 351122

Bexley Federation of Allotment & Leisure
Gardeners (BFALG)
07470 468594

Bexley Football Club
020 8858 5123

Bexley Natural Environment Forum
01322 521 259

Bexley Down's Syndrome Group
www.uniteddownsyndrome.co.uk

Bexley Heritage Trust
Hall Place - 01322 526574

Bexley Historical Society
secretary@bexleyhistoricalsociety.org.uk

Bexley Ladies Keep Fit Club
Hurst Community Centre
Bexley & Lewisham Sea Cadets
020 8304 9448

Bexley Masters Swimming Club
07957 447432

Bexley Marquetry Group
01689 851702

Bexley Mencap
020 8303 6336

Bexley ME Support Group
020 8303 8553

Bexley Moorings Project
www.bexley Moorings.co.uk

Bexley Music Society
020 8306 2152

Bexley Pain Group
020 8298 6287

Bexley Park Bowls Club
selkent01@hotmail.com

Bexley Philatelic Society
(Bexley Stamp Club)
01322 559210

Bexley Photography
Chatter Community
www.BexleyPhotographyChatter.co.uk

Bexley Rotary Club
bexleyrotaryclub@gmail.com

Bexley Rugby Football Club
www.bexleyrugby.co.uk 07791 127331

Bexley School of Dance
www.bexleyschoolofdance.com

Bexley SNAP
01322 359 475

Bexley Stop Smoking Service
0800 7832514

Bexley Talking Newspaper
01322 445293

Bexley Tinnitus Support Group
01322 525115

Bexley Twofold
020 8303 7777/020 3045 4920

Bexley Turkish Elderly Day Centre
020 8306 6736

Bexley Voice
07512 409936

Bexley Volunteer Centre
01322 524682

Bexley Ukulele Group
07711 704033

Bexley WEA (Workers'
Educational Association)
020 8300 1845

Bexley Women's Aid
020 8301 1536

Bexley Village Women's Institute
01322 554544

Bexleyhealth & District Club
for Disabled
020 8303 4826

Bexleyhealth & Barnehurst
Bowls Club
01322 526932 or 0744 447 5417

Bexleyhealth & Belvedere
Hockey Club
07720 412547

Bexleyhealth Photographic Society
www.bexleyhealthphotographicsociety.zenfolio.com

Bexleyhealth Morning Townswomens Guild
020 8310 4537

Bexleyhealth Gaming Club
(Pokemon/Yugioh)
www.facebook.com/BexleyGamingClub

Bexleyhealth & Crayford Waterside Women's
Institute
020 8303 5158

Bexrose Gardening Society
01322 527947

Bird College
020 8300 6004

Box Therapy
www.boxtherapy.online

Brampton Art Group
020 8303 9132

The Boys' Brigade & Girls Assoc
020 8304 9669

Bridge Club at VCD Crayford
01322 446625 / 07955 470762

Bridge Mental Health
020 8298 9677

Bridging the Gap South East
020 8300 5444

British Army Association
01322 449175

British Polio Fellowship
(North West Kent Branch)
020 8304 1694

Campaign for Real Ale (CAMRA)
01727 867201

Cancer Research UK - local fund raising
020 8302 3964

Chislehurst & Sidcup Ballet Club
07746719258

Care Matters UK Ltd
01322 522440

Carers' Support Bexley
020 8302 8011

Chislehurst & Sidcup Ballet Club
07746 719258

The Compassionate Friends Child
Bereavement Support
www.tcf.org.uk

Connexions Prospects
020 3045 5555

Contact the Elderly
020 8303 4723

County Gate Lodge
www.cgl7849.org

Crayford & District Men's Probus Club
020 8304 2802

Crayford Camera Club
01322 438808

Crayford Judo Club
01322 631108

Crayford Manor House
Historical Society
01322 551279

Crayford Town Archive
07800 992931

Crayford Women's Institute
01322 557229

The Crossness Engines Trust
www.crossness.org.uk

Crossroads Care South East London
01322 336086

Cruse Bereavement Care
020 8304 5245

Danson Park Bowls Club
07751068274

Danson Youth Trust
020 8303 6052

Darent Cray National Trust Association
01474 705402

Diabetes UK Bexley Support Group
07775 305110

Dimbleby Macmillian Cancer Support Guys
at Queen Mary's hospital
020 7188 0771

East Wickham Open Space Conservation
Volunteers
www.eastwickham.org.uk

Erith & Belvedere Local History Society
01322 337893/01322 437925

Erith & District Swimming Club
edsc@edsc.org.uk

Erith & District Synchronised Swimming
Squads
synchro@edsc.org.uk

Erith & Thamesmead CAP Debt Centre
07576 315994

Erith Model Railway Society
www.erithmrs.ukmodelshops.co.uk

Erith Nemesis Martial Arts Gym
01322 335076

Erith Veterans Club Singers
01322 553078

Evergreen Care Bexley
www.evergreencarebexley.org

Feel Good Co-Operative
07908 034081

Friends of Danson Park
07596 657763

Friends of the Earth - Bexley
www.foe.co.uk/bexley

Friends of Footh Cray Meadows
www.footscraymeadows.org

Friends of the Red House
01322 865186

Friends of the Shuttle
www.friendsoftheshuttle.org

Family Action
020 8310 6570

Geddes Place Widows Group
01322 521754

Haven - Gay & Lesbian Social Group
01322 287356 / 07804 808581

Headway South East London/
North West Kent
020 8319 7148

Healthwatch Bexley
020 8304 9344

Helio Mirror Bowls Club
www.russellparkbowls.co.uk/helio-mirror

Hill Park Autistic Trust
01322 334318

Holy Trinity Lamorbey Social Club
07903 565502

Hurst Horticultural & Garden Society
020 8306 2202

Imago
07710 847812 www.imago.community

Insight Bexley
07824 999581

Inspire Community Trust
020 3045 5100

Irish Community Services in Greenwich
, Bexley & Lewisham
020 8854 4466

Jlinks Physiotherapy
07951 025208

Kingfisher Bowls Club
020 8302 8830

Lamorbey Park Archers
www.lamorbeyparkarchers.club

Lamorbey & Sidcup Local
History Society
020 8302 0059

Lamorbey Park Cricket Club
07741 193133

Lesnes Abbey Woods
Conservation Volunteers
www.lacv.btik.com

London Borough of Bexley Retired
Employees Assoc
020 8300 5526/020 8303 0606

Macular Society Bexley Support Group
020 8856 8954

Manor House Bowls Club
01322 400031 07960 862249

Mayplace Art & Crafts Group
01322 529972

The Meeting Place
Wed 9.30am - 1.30pm
St John Fisher Church Hall

Meridian Canoe Club
07801 549601

MIND In Bexley
020 8303 5816

MND Association
01322 228169

Multiple Sclerosis Society
020 8306 7050

New Sidcup / Eagles / Bexley
Badminton Club
www.eaglesandsidcup.com

Norfolk Women's Club (Sidcup)
07765 428569

North West Kent Family History Society
www.nwfkhs.org.uk

North Kent Scottish Association
Wednesday evenings at
Barnehurst Golf Club

Old Bexley Floral Arrangement Society
020 8302 9984

Parkinson's Disease Society
020 8306 5973

The Practical Photographic Group
020 8304 6561

Rainbows, Guide or Ranger Groups
020 8301 1200/01322 294516

Re-Instate Community Hub
01322 438155

The Rendevous Club for over 50's
01322 287356/020 8859 2035

Red Robins Singing for Health
07900 205862

Royal Airforces Assoc
020 8303 5158

Royal Artillery Association -
Sidcup Branch
020 8306 1992

Royal Naval Association (Sidcup Branch)
07932 767105

Serenade Singers
mchwitford@gmail.com

St John Ambulance
Sidcup - 0844 770 4800
Erith - 07974 219471

St Michaels Ladies Club Welling
020 8306 1146

Samaritans
020 8301 1010

Shopmobility Scheme
020 8301 5237

Sidcup Art Club
020 8302 5390

Sidcup Bowls Club
07977 145039

Sidcup Chess Club
www.sidcupchessclub.org.uk

Sidcup Debt Advice
020 8269 8621

Sidcup & District Caledonian Association
Scottish Country Dancing
020 8856 4522

Sidcup & District Motor Cycle Club
01634 201268

Sidcup and District University of the
Third Age
020 8850 2046

Sidcup Jazz Club
01322 442442

Sidcup Jazz Record Club
01689 835805

Sidcup Literary & Scientific Society
020 8300 8647

Sidcup Musical Productions
020 8304 9150 / 020 8300 1392

Sidcup Philatelic Society
020 8300 9627

Sidcup Symphony Orchestra
01322 552710

Signpost Community - Drug & Alcohol Team
01322 357940

SmileyArk Kids Club
07956 263531

Smyth Lodge (Care home) (Sidcup)
03333 218599

The Scout Association
0845 094 6368 or 0845 300 1818

Speakability Sidcup
080 8808 9572

SSAFA - the Armed Forces Charity
020 8639 0495

Stillbirth & Neonatal Death
07951 454682

St John Ambulance Crayford Sidcup
0844 770 4800

St Mary's (Welling) Players
020 8303 8933 / 07866 259302

Sunrise Frognaal House Residential Care
Home (Sidcup)
020 8302 2600

Trust Thamesmead
020 3828 4900

The Link Thamesmead
020 3828 4950

Sporting Club Thamesmead
020 3828 4920

Thames Innovation Centre
020 8320 1000

Thamesmead Running Club
07944 282611

Trefoil Guild - Invicta (Welling)
020 8304 8409 / 01689 811116

United Nations Assoc (Bexley)
01322 335 479

University of the Third Age
Abbey Wood & Thamesmead
020 8311 4797

University of the Third Age Bexley
07946 377898

Veterans Club of Bexley
020 8304 2815

Victim Support (Bexley)
020 7277 1433 / 020 8698 4583

Volunteers Information Service (VIS)
01322 335 479

Welling Being Link
07895 143939

Welling University of the Third Age
020 8304 4130

Women's Aid Helpline
020 8301 1536

TLC Home Care Award Winning Home Care Provider in Bexley



TLC Home Care Solutions - Home Care providers support the residents of Sidcup, Blacken, Bexley and surrounding areas. We also work in partnership with the London Borough of Bexley and have done so successfully for the past 5 years.

If you would be interested in joining our team of home care support workers, we would love to hear from you.

Ideal candidates will require the following qualities

- Genuine care for others
- Excellent communication skills
- Ability to understand what the role entails
- Experience in care provision
- Have your own transport
- Flexible availability
- To understand the importance of our clients
- To be able to maintain high standards of care provision
- To have a desire to make a real difference

We provide full training and uniforms and offer excellent rates of pay.

For further details on how to apply please call us on 01322 466 817

or email us at enquiries@tlchomecaresolutions.co.uk.

www.tlchomecaresolutions.co.uk



Bexley Podiatry Clinic Ltd

Keep your feet healthy & happy!

151 - 153 Blendon Road, Bexley, Kent. DA5 1BT.

020 8304 2474 bexleypodiatryclinic.co.uk

info@bexleypodiatryclinic.co.uk

We are here to help.

Information and Advice · Welfare Benefit Advice · Dog Walking · Digital Socialising Sessions · Telephone Befriending · Footcare

We also need your help.

'Keeping the Lights On' Appeal
During the Covid-19 Crisis, Age UK Bexley has lost 50% of its traditional revenues. Despite this, we have continued to support older people in Bexley. We need support from the local community now more than ever. Please donate or fundraise on behalf of Age UK Bexley today.

Our Just Giving Page:
www.justgiving.com/campaign/ageukbexleycovid19appeal

Get in touch
Telephone: 020 8300 0883
Website: www.ageuk.org.uk/bexley

Registered charity number 1088399. Company number 4244876.

Parkinsons

Appliance Services Ltd
07766 607251
020 8301 1618 / 020 8303 6950

Repairs/Sales/Service

Washing machines, Dishwashers, Cookers, Ovens, Tumble Dryers, Storage Heaters etc
Fast Friendly Service
Formerly of Lion Road, Bexleyheath

Join Team Carewatch!

Full Time & Part Time Roles available

We are recruiting people who want to make a genuine difference to other's lives by supporting them in their own homes.

For more details, phone us today

020 8303 3330

No experience is required, if you have the right attitude, we can teach you the rest!



£9.45
per hour
Car is essential

E: info@carewatchbexley.com
www.carewatch.co.uk/home-care-jobs

carewatch



STAND OUT

Study your degree with us

TEF Silver

Find out more:
LSEC.ac.uk
020 3954 4000

LONDON
SOUTH EAST
COLLEGES
UNIVERSITY CENTRE

Are you worried about facing time on your own?

If you need extra support, we're happy to help!

- Assist with **shopping** lists
- Pick up and deliver shopping
- Prepare your **meals**
- Collect **medication**
- Offer **companionship**
- Suggest **activity** to help you **stay fit** at home
- Support on **wellbeing** and **mental health**

Our CAREGivers are DBS police & reference checked, Patient, kind and experienced in delivering elderly care



Home Instead
SENIOR CARE
To us, it's personal.

Inspected and rated
Outstanding ☆
Care Quality Commission

Calls us now on 020 3771 8424

www.homeinstead.co.uk/greenwich