

# Bexley Community Safety Partnership Strategy

2018 – 2021



**Keeping Bexley Safe**

# Foreword

Bexley Community Safety Partnership (BCSP) aims to keep people who live, work, study or visit the London Borough of Bexley safe - “keep crime low, feel safe.”

The BCSP’s objectives are to:

- Keep people who live, work, study and visit Bexley safe by Reducing Crime, Disorder, Antisocial Behaviour, Reoffending and combating substance misuse; and
- Act upon any barriers that prevent people who live, work, study and visit Bexley from feeling safe; to be a place where people can go about their everyday lives, day or night, confident in the knowledge that this is a place where people treat each other fairly, with respect, and they are safe from harm or the effects of crime and disorder.

*Cllr Peter Craske  
Cabinet Member for Community Safety  
London Borough of Bexley  
BCSP Board Chair*

*Graham Coles  
Borough Commander London Fire Brigade  
BCSP Board Vice-Chair*

*Superintendent Stuart Bell  
Borough Commander Bexley Borough  
Metropolitan Police Service*

# 1. About Bexley Community Safety Partnership

Bexley Community Safety Partnership (BCSP) brings together the authorities responsible for local crime and disorder strategies. It provides direction, coordination and a partnership response to deliver activities aimed at reducing crime, disorder and antisocial behaviour.

BCSP principles are to:

- *Facilitate partnership working and information sharing processes between relevant agencies*
- *Support the development of intelligence around local crime and antisocial behaviour to enable resources to be deployed effectively*
- *Manage and oversee the delivery of BCSP sub groups and work processes to bring about reductions in crime, disorder and antisocial behaviour; and*
- *Ensure that all agencies are supporting and training staff for effective partnership delivery.*

## 2. Context

BCSP has faced extensive challenges in recent years, through various restructures and changes in resources for all partners. To illustrate this, in the last four years the Metropolitan Police has had to make £600m of savings and says it is due to lose an extra £400m by 2020. Meanwhile, the number of recorded offences across London has increased.

Set against this background, BCSP continues to proactively engage in initiatives and introduce preventative measures to combat crime and disorder in Bexley.

We face significant challenges as we move forward. However, we have a strong track record of facing such challenges “head on” by working in partnership to tackle the issues that really matter to local people, and we firmly believe that together we can continue to keep Bexley one of London’s safest boroughs.

BCSP is mindful that the MPS are considering borough merges and one of the proposals is to reduce from 32 individual Borough Command Unit’s

(BCU’S) to 12. Whilst these mergers are still in the review and feasibility stage, it is important to recognise that the way the BCSP work could significantly change over the course of this strategy. The possibility that the existing Bexley BCU could merge with Greenwich and Lewisham Boroughs under one BCU Commander totally responsible and accountable for the policing of all three boroughs will be kept under review by the BCSP Board.

Following a review in 2017, MOPAC made the decision to retain Bexleyheath Police Station. Further operational and logistical details will again be kept under review by the BCSP Board.

The Office of National Statistics indicated that reported crime in England and Wales is rising, with a 13% increase between June 2016 and June 2017. In London, the number of recorded offences is also increasing, with violent crime having risen by 63% since May 2013 and gun crime increasing by 54% in the past two years.

Bexley prides itself in being one of London’s safest boroughs – regularly being one of the top three performing boroughs. Recent historical performance has shown that, even when crime rises across the region, Bexley usually remains as one of the safest boroughs, relative to the other boroughs. However, whilst Bexley has consistently remained in the top quartile during 2017, monthly rolling figures have begun to show a slight decline fall in Bexley’s position. The monthly rolling figures for January to October 2017 show Bexley as 3rd safest borough across this 10 month period, but falling to 5th place for the month of October alone. These crime statistics, the fall and any potential changes to local resources, and the possible impact upon our communities, will be regularly kept under review by the BCSP Board and where possible, the local challenges understood and tackled in partnership.

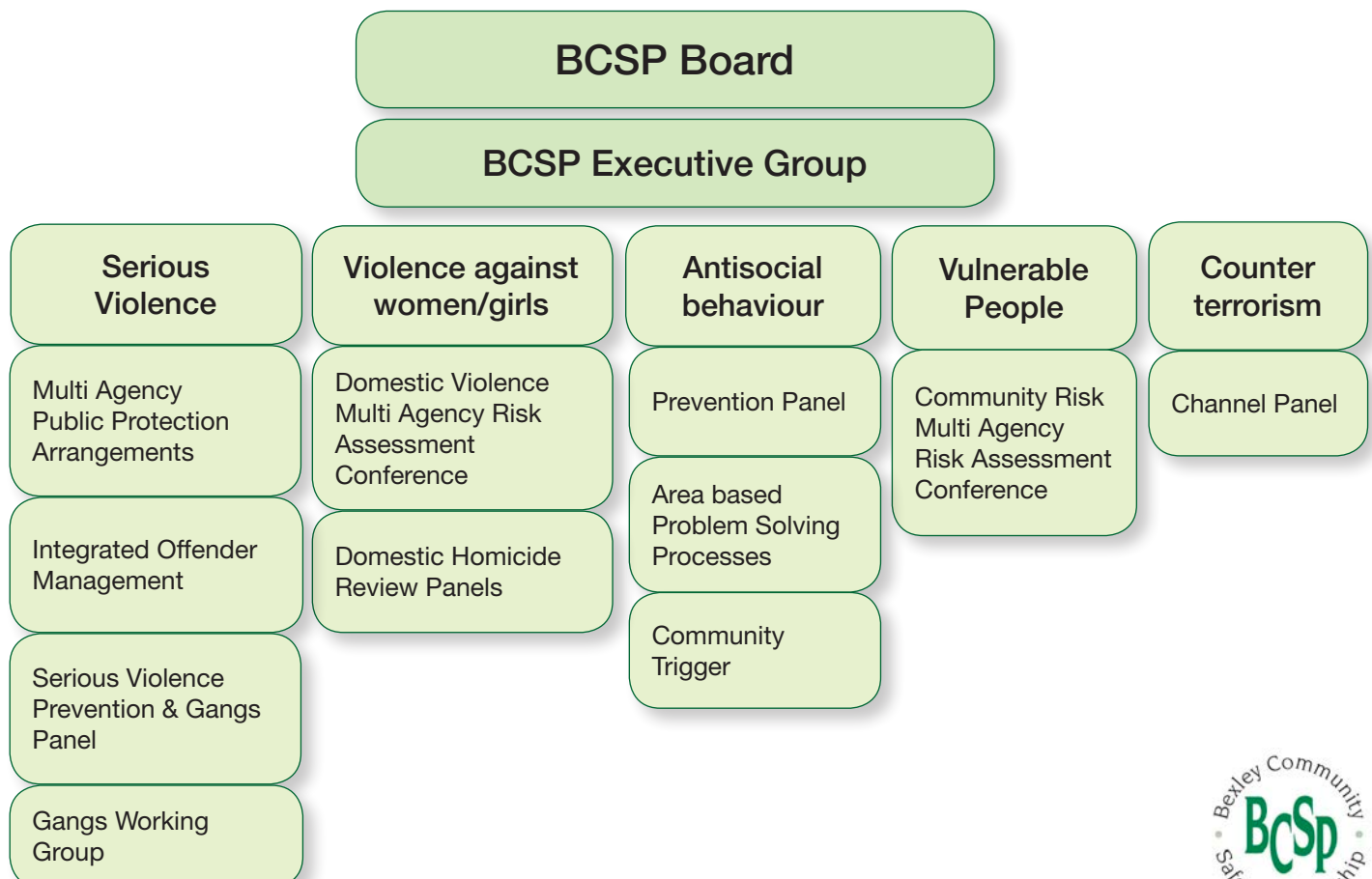


Keeping Bexley Safe

### 3. BCSP Membership



### 4. Governance and Partnershp meeting structure



## 5. Our current priorities

Our current priorities are:

- *Safeguard and support victims and families of domestic abuse and hate crime*
- *Tackle identified antisocial behaviour in our communities*
- *Continue to reduce residential burglary and its impact on the community*
- *Early intervention to safeguard people against violent crimes*
- *Reduce substance misuse related to crime and antisocial behaviour*

## 6. How are our local priorities chosen?

Each year BCSP consult with people who live, work, study or visit Bexley through the Bexley Crime Survey. The results of this consultation process are reflected in the Joint Strategic Assessment (JSA).

The JSA measures and analyses levels, patterns and trends of crime and disorder, antisocial behaviour, reoffending and substance misuse occurring in Bexley. It also draws on the findings of in-depth pieces of analysis that have been carried out into specific areas of concern in order to gain a full understanding of trends or concerns.

BCSP Board will regularly review the patterns and trends to ensure the borough priorities and outcomes are still relevant.

In order to take forward the priorities within this strategy a Delivery Plan is produced. The plan contains actions and performance measures to ensure BCSP can monitor and deliver against its priorities and objectives.

The plan is the responsibility of BCSP Board and is reviewed by the Executive Group on a six-monthly basis.

## 7. How will we know we are making a difference?

- Families will be more confident and resilient, seeking support and advice earlier to reduce the harmful impact of domestic abuse.
- A more confident and cohesive community who are reporting hate crime issues to the authorities.
- A more confident community who are reporting antisocial behaviour and also involved in developing community solutions.
- Communities who are more resilient and better protected from the impact of burglary.
- Those most vulnerable will be better equipped to avoid becoming victims of violence.
- Agencies and communities more aware of the impact of drug misuse and developing local solutions.

## 8. Police & Crime Plan for London 2017– 2021

The Mayor's Police and Crime Plan for 2017 – 2021 sets out its five top priorities for London:

- *A better police service for London*
- *A better criminal justice service for London*
- *Keeping children and young people safe*
- *Tackling violence against women and girls*
- *Standing together against hatred and intolerance*

The plan includes measures to tackle these issues, reduce crime and disorder in London and improve police services across the city.

In 2017 MOPAC developed a new performance framework to measure the things that really matter to the safety of Londoners and that paints a more accurate picture of how safe and confident London is. MOPAC have consulted with every borough and developed a new system of agreeing local priorities, in partnership with local police leaders and the elected local council.



Keeping Bexley Safe

Under this system each borough has selected two local priority crimes, based on local knowledge, crime data and police intelligence. These local priorities will be refreshed annually, with flexibility to change during the year if necessary to ensure they report current and relevant.

The priorities for all boroughs also include five mandatory high-harm crimes.

Current mandatory high harm crime focus:

- *Sexual violence*
- *Domestic abuse*
- *Child sexual exploitation*
- *Weapon based crime*
- *Hate crime*

Current Mandatory high volume crime focus:

- *Antisocial behaviour*

Bexley's two local priorities:

- *Burglary*
- *Non domestic violence with injury*

## 9. London Borough of Bexley Corporate Priorities

In 2017 London Borough of Bexley launched their new Corporate Plan #BrilliantBexley, shaping our future together. Along with the Council's Medium Term Financial Strategy, the plan sets out the Council's vision for the future and the outcomes they want to achieve for the borough and its residents. It also details how the Council will provide resources and work with local people and organisations to achieve the outcomes, which are set out under five priorities:

- *Growth that benefits all*
- *Clean and green local places*
- *Strong and resilient communities and families*
- *Living well*
- *Innovation and self-sufficiency*

## 10. Working together on safeguarding

Whilst local authorities have an overarching responsibility for the safeguarding of children and adults, safeguarding is everyone's responsibility. Safeguarding means protecting them from abuse or neglect, getting the right support in place as early as possible and creating an environment in which they feel safe and healthy. Each local authority has a duty to do so and London Borough of Bexley works alongside all organisations in the borough such as the National Health Service, family doctors, police, education, London Ambulance Service, as well as care providers and voluntary and community sector organisations and faith groups to achieve this.



Our key safeguarding principles are:

- *Commitment to working together to shared aims*
- *Respect for each partnership's roles, responsibilities and work within the agreed protocol*
- *Culture of mutual challenge and professional accountability*
- *Effective interface and regular communication*
- *Safeguarding is everybody's responsibility*



**Keeping Bexley Safe**

**For further information contact Community Safety Services Team  
London Borough of Bexley**

**Email:  
[community.safety@bexley.gov.uk](mailto:community.safety@bexley.gov.uk)**

**Telephone: 020 8303 7777**

**Follow us**



If you would like the information in this document in a different format, please call 020 8303 7777  
and ask for Communications/Graphics. The reference to quote is: 607046/1.18