

Bexley Community Safety Partnership Strategy 2022 – 2025



Contents

Foreword	3
1. About Bexley Community Safety Partnership	4
2. Context	4
3. BCSP Membership	6
BCSP Membership - accessible version	7
4. Governance and Partnership meeting structure	8
Governance and Partnership meeting structure - accessible version	9
5. Our current priorities	10
6. How are our local priorities chosen?	10
7. How will we know we are making a difference	10
8. Police & Crime Plan for London 2021 – 2025	11
Police and Crime Plan Outcomes Framework Diagram – accessible version	12
9. Working together on safeguarding	13
Further information	14

Foreword

Crime devastates the lives of individuals, families and communities but tackling the root causes requires a combined effort with our partners and our communities. Bexley Community Safety Partnership (BCSP) aims to keep people who live, work, study or visit the London Borough of Bexley safe - “keep crime low, feel safe.”

The BCSP’s objectives are to:

- Keep people who live, work, study and visit Bexley safe by reducing Crime, Disorder, Antisocial Behaviour, Reoffending and combating substance misuse; and
- Act upon any barriers that prevent people who live, work, study and visit Bexley from feeling safe; to be a place where people can go about their everyday lives, day or night, confident in the knowledge that this is a place where people treat each other fairly, with respect, and they are safe from harm or the effects of crime and disorder.

This strategy is aligned to national crime and disorder plans, and to other local plans in key areas such as safeguarding, to ensure we are all working towards the same goals; that we properly understand the issues; are able to address the risk factors that increase the likelihood of somebody becoming an offender or a victim of crime and work together effectively to reduce this risk. As such, prevention is central to our approach.

BSCP approaches the next three-year plan from a sound foundation of achievement. However, challenges remain, and we want to do more. By working together in partnership with agencies and local communities we will tackle the root causes of crime and disorder and make Bexley even safer.

Cllr Sue Gower MBE

Cabinet Member for Community Safety

London Borough of Bexley

BCSP Board Chair

Det. Chief Superintendent Trevor Lawry

Borough Commander

Southeast BCU

Metropolitan Police Service

1. About Bexley Community Safety Partnership

Bexley Community Safety Partnership (BCSP) brings together the authorities responsible for local crime and disorder strategies. It provides direction, coordination, and a partnership response to deliver activities aimed at reducing crime, disorder, and antisocial behaviour.

BCSP principles are to:

- Facilitate partnership working and information sharing processes between relevant agencies
- Support the development of intelligence around local crime and antisocial behaviour to enable resources to be deployed effectively
- Manage and oversee the BCSP Strategic Delivery Group and work processes to bring about reductions in crime, disorder, and antisocial behaviour; and
- Ensure that all agencies are supporting and training staff for effective partnership delivery.

2. Context

BCSP has faced extensive challenges in recent years, through various restructures and changes in resources for all partners.

This includes continued savings needed to be made by the Metropolitan Police Service (MPS), and the reunification of the National Probation Service (NPS) and Community Rehabilitation Companies (CRC's) into one single agency.

In 2018, the MPS merged the 32 boroughs to form 12 individual Basic Command Unit's (BCU's). This placed Bexley alongside Greenwich and Lewisham to form the Southeast BCU. Whilst these mergers are now embedded, it is

important to recognise that the way the BCSP works has changed since the previous strategy was written.

Any further operational and logistical details on the BCU model will be kept under review by the BCSP Board and there is regular dialogue between the three Council's Leaders and the Borough Commander.

During the Covid-19 global pandemic, restrictions on movement and temporary closure of businesses saw an overall reduction in physical crime offences. This didn't however include fraud offences which are collated separately and due to their volume, we have seen a net increase in crime.

All these changes have meant that partners have had to be more agile in their working practices. Multi-agency collaboration and communication is key to future BCSP success.

Set against this background, BCSP continues to proactively engage in initiatives and introduce preventative measures to combat crime and disorder in Bexley.

We face challenges as we move forward. However, we have a strong track record of facing such challenges "head on" by working in partnership to tackle the issues that really matter to local people, and we firmly believe that together we can continue to keep Bexley one of London's safest boroughs.

The Office of National Statistics report confirms that "patterns of crime in the year ending September 2021 have been significantly affected by the coronavirus (COVID-19) pandemic and government restrictions on social contact.

There was significant variation in the level of restrictions in place across this time period and, at times, further variation across regions. This creates a challenge in isolating the level of impact

that restrictions may have had on patterns of crime.

The number of incidents decreased for many types of crime during periods of national lockdowns. However, police recorded crime data show indications that over the last six months, certain offence types were returning to or exceeding the levels seen before the pandemic.

Fraud and computer misuse offences do not follow the lockdown-related pattern of reduced victimisation and increases in these offences more than offset the reductions seen for other types of crime.

Overall, Crime Survey for England and Wales (CSEW) estimates provide the best indicator of long-term trends in crime. Estimates from the TCSEW for the year ending September 2021 compared with the pre-coronavirus year ending September 2019 show:

- a 14% increase in total crime, driven by a 47% increase in fraud and computer misuse
- crime excluding fraud and computer misuse decreased by 14%, largely driven by an 18% decrease in theft offences”

Bexley prides itself in being one of London’s safest boroughs – regularly being one of the top five performing boroughs. Recent historical performance has shown that, even when crime rises across the region, Bexley usually remains as one of the safest areas, relative to the other boroughs.

These crime statistics, the fall and any potential changes to local resources, and the possible impact upon our communities, will be regularly kept under review by the BCSP Board and where possible, the local challenges understood and tackled in partnership.

3. BCSP Membership

See the BCSP membership diagram below or [view the accessible version](#).

Chair

Cabinet Member for Community Safety, London Borough of Bexley

Statutory Partners:

London Borough of Bexley
Metropolitan Police Service
London Fire Brigade
National Probation Service
Southeast London CCG (Bexley Borough)
Mayor’s Office for Policing and Crime

***Non Statutory Partners include:**

Bexley Safer Neighbourhood Board
Bexley Voluntary Service Council
Solace Women’s Aid
British Transport Police
Education establishments
Local Housing Providers
Bexley Neighbourhood Watch Association
Youth Unity CIC
Victim Support London

**List not exhaustive*

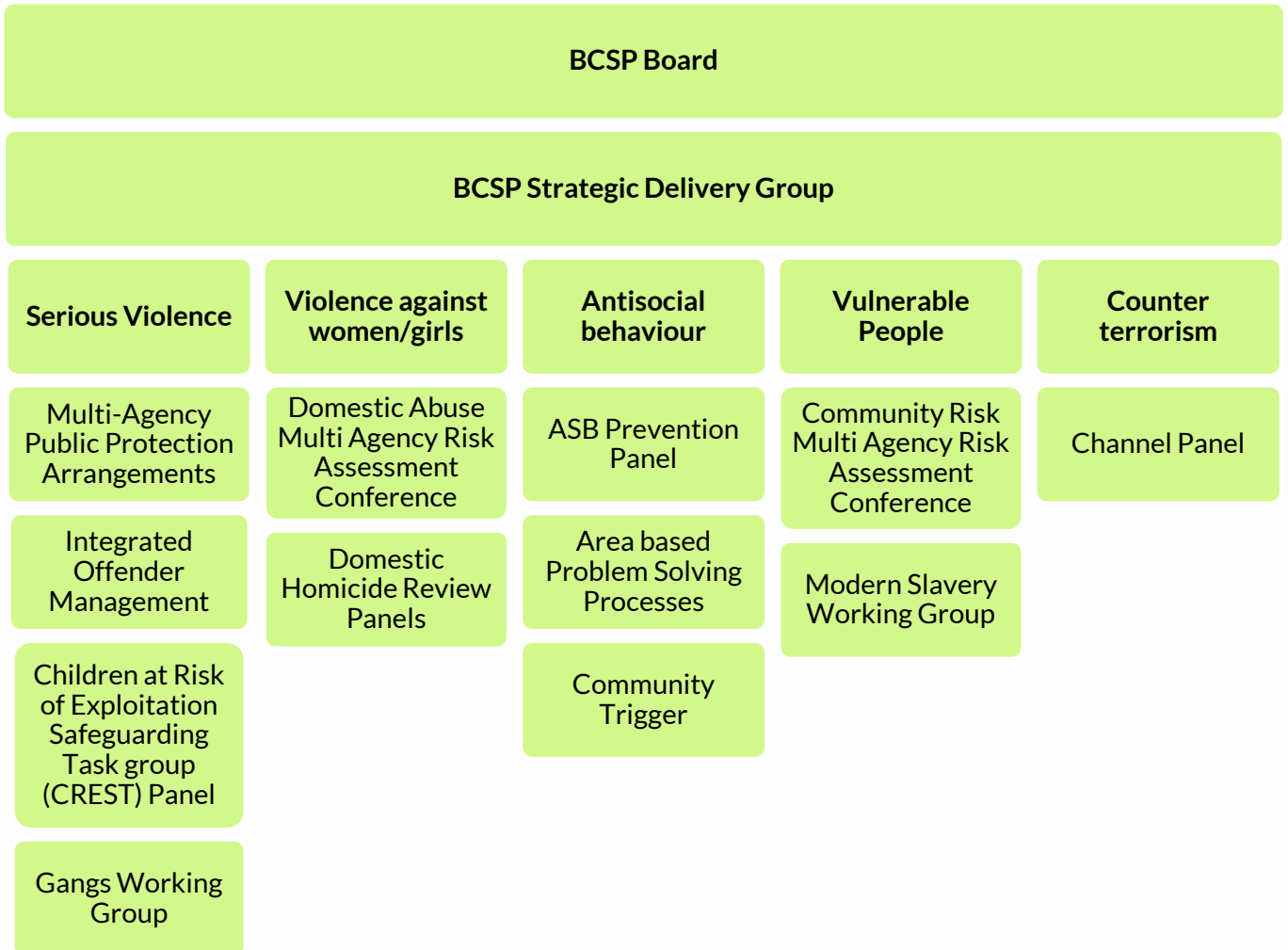
BCSP Membership - accessible version

- **Chair**
- **Cabinet Member for Community Safety, London Borough of Bexley**
- **Statutory Partners:**
 - London Borough of Bexley
 - Metropolitan Police Service
 - London Fire Brigade
 - National Probation Service
 - Southeast London CCG (Bexley Borough)
 - Mayor's Office for Policing and Crime
- ***Non Statutory Partners include:**
 - Bexley Safer Neighbourhood Board
 - Bexley Voluntary Service Council
 - Solace Women's Aid
 - British Transport Police
 - Education establishments
 - Local Housing Providers
 - Bexley Neighbourhood Watch Association
 - Youth Unity CIC
 - Victim Support London

**List not exhaustive*

4. Governance and Partnership meeting structure

See the Governance and Partnership meeting structure below or [view the accessible version](#).



Governance and Partnership meeting structure - accessible version

- **BCSP Board**
- **BCSP Strategic Delivery Group**
- **Serious Violence:**
 - Multi-Agency Public Protection Arrangements
 - Integrated Offender Management
 - Children at Risk of Exploitation Safeguarding Task group (CREST) Panel
 - Gangs Working Group
- **Violence against women/girls:**
 - Domestic Abuse Multi Agency Risk Assessment Conference
 - Domestic Homicide Review Panels
- **Antisocial behaviour:**
 - ASB Prevention Panel
 - Area based Problem Solving Processes
 - Community Trigger
- **Vulnerable People:**
 - Community Risk Multi Agency Risk Assessment Conference
 - Modern Slavery Working Group
- **Counter terrorism:**
 - Channel Panel

5. Our current priorities

Our current priorities are to:

- Safeguard and support victims and families of domestic abuse and hate crime
- Tackle identified antisocial behaviour in our communities
- Continue to reduce residential burglary and its impact on the community
- Early intervention to safeguard people against violent crimes
- Reduce substance misuse related to crime and antisocial behaviour

6. How are our local priorities chosen?

Each year BCSP consult with people who live, work, study or visit Bexley through the Bexley Crime Survey. The results of this consultation process are reflected in the Joint Strategic Assessment (JSA).

The JSA measures and analyses levels, patterns and trends of crime and disorder, antisocial behaviour, reoffending, and substance misuse occurring in Bexley. It also draws on the findings of in-depth pieces of analysis that have been carried out into specific areas of concern in order to gain a full understanding of trends or concerns.

BCSP Board will regularly review the patterns and trends to ensure the borough priorities and outcomes are still relevant.

In order to take forward the priorities within this strategy a Delivery Plan is produced. The plan contains actions and performance measures to ensure BCSP can monitor and deliver against its priorities and objectives.

The plan is the responsibility of BCSP Board and is reviewed by the Strategic Delivery Group on a six-monthly basis.

7. How will we know we are making a difference

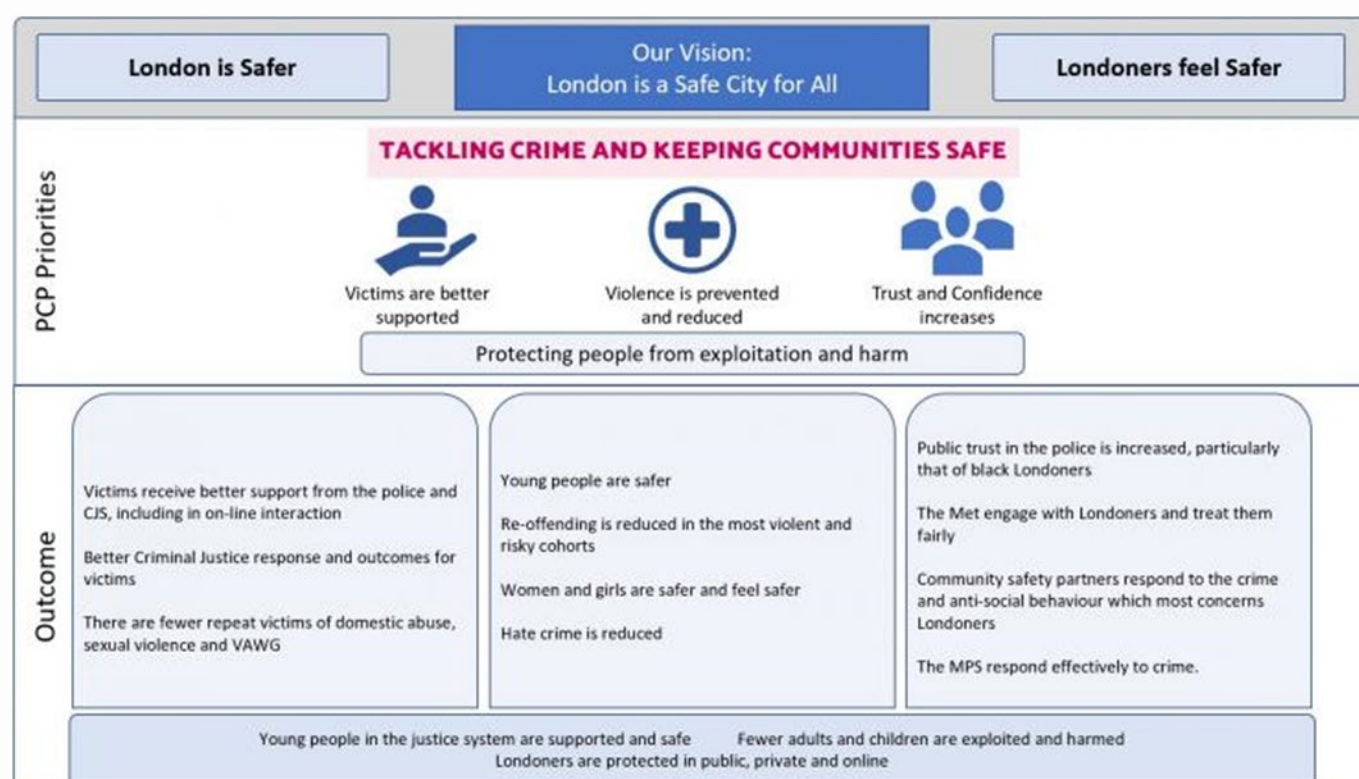
- Families will be more confident and resilient, seeking support and advice earlier to reduce the harmful impact of domestic abuse.
- A more confident and cohesive community who are reporting hate crime issues to the authorities.
- A more confident community who are reporting antisocial behaviour and also involved in developing community solutions.
- Communities who are more resilient and better protected from the impact of burglary.
- Those most vulnerable will be better equipped to avoid becoming victims of violence.
- Agencies and communities more aware of the impact of drug misuse and developing local solutions.

8. Police & Crime Plan for London 2021 – 2025

The Mayor’s Police and Crime Plan for 2021 – 2025 sets out its four top priorities for London:

- reducing and preventing violence
- increasing trust and confidence in the MPS
- better supporting victims, and
- protecting people from exploitation and harm

The plan includes measures to tackle these issues, reduce crime and disorder in London and improve police services across the city.



Police and Crime Plan Outcomes Framework Diagram - [view the accessible version](#).

Under the performance framework to measure the things that really matter to the safety of Londoners, MOPAC developed a new system of agreeing local priorities, in partnership with local police leaders and the elected local council. Under this system each borough has selected two local priority crimes, based on local knowledge, crime data and police intelligence. These local priorities will be refreshed annually, with flexibility to change during the year if necessary to ensure they report current and relevant.

Bexley’s two local volume priorities are:

- Burglary
- Non-domestic violence with injury

Police and Crime Plan Outcomes Framework Diagram – accessible version

Our Vision: London is a Safe City For All.

London is Safer, Londoners feel Safer.

Tackling crime and keeping communities safe.

PCP Priorities

- Victims are better supported
- Violence is prevented and reduced
- Trust and Confidence increases

Protecting people from exploitation and harm.

Outcome

- Victims receive better support from the police and CJS, including in on-line interaction
- Better Criminal Justice response and outcomes for victims
- There are fewer repeat victims of domestic abuse, sexual violence and VAWG
- Young people are safer
- Re-offending is reduced in the most violent and risky cohorts
- Women and girls are safer and feel safer
- Hate crime is reduced
- Public trust in the police is increased, particularly that of black Londoners
- The Met engage with Londoners and treat them fairly
- Community safety partners respond to the crime and anti-social behaviour which most concerns Londoners
- The MPS respond effectively to crime

Young people in the justice system are supported and safe.

Fewer adults and children are exploited and harmed.

Londoners are protected in the public, private and online.

9. Working together on safeguarding

Whilst local authorities have an overarching responsibility for the safeguarding of children and adults, safeguarding is everyone's responsibility. Safeguarding means protecting them from abuse or neglect, getting the right support in place as early as possible and creating an environment in which they feel safe and healthy.

Each local authority has a duty to do so, and London Borough of Bexley works alongside all organisations in the borough such as the National Health Service, family doctors, police, education, London Ambulance Service, as well as care providers and voluntary and community sector organisations and faith groups to achieve this.

Our key safeguarding principles are:

- Commitment to working together to shared aims
- Respect for each partnership's roles, responsibilities, and work within the agreed protocol
- Culture of mutual challenge and professional accountability
- Effective interface and regular communication
- Safeguarding is everybody's responsibility
- Working in a trauma informed way:

Our Way of Working considers trauma to be deep and profound. It focuses on all aspects of childhood adversity across the continuum of need. For example, from the diagnosis of serious illness, poverty, death, and loss to abuse and neglect. It enables us to practice in a trauma informed way to understand how trauma can impact families through generations and everyday lives.

Through working in this way, we start to develop our shared language and understanding, shifting our thinking from asking 'what has happened' to 'why has this happened'. This enables us to consider the root causes of the pain, behaviours and difficulties children and young people are experiencing.

Four key principles outline how we practice in a trauma informed way:

- Recognise
- Respond
- Avoid Re-traumatisation
- Build Resilience

Further information

For further information contact:

Community Safety Services Team

London Borough of Bexley

community.safety@bexley.gov.uk