

**TOWN AND COUNTRY PLANNING (GENERAL PERMITTED DEVELOPMENT)
(ENGLAND) ORDER 2015 (AS AMENDED)**

DIRECTION UNDER ARTICLE 4(1) TO WHICH ARTICLE 6 APPLIES

WHEREAS THE LONDON BOROUGH OF BEXLEY being the appropriate local planning authority within the meaning of article 4(5) of the Town and Country Planning (General Permitted Development) (England) Order 2015 (as amended) ("the Order") is satisfied that it is expedient that development of the description set out in the First Schedule below should not be carried out on the land shown edged red ("The Land") within strategic industrial locations (shown edged blue) and locally significant industrial sites (shown edged green) on the attached maps in the Second Schedule below unless planning permission is granted on an application made under Part III of the Town and Country Planning Act 1990 (as amended).

NOW THEREFORE the said Council in pursuance of the power conferred on it by article 4(1) of the Order hereby directs that the permission granted by article 3 of the Order shall not apply to development on the said land of the description set out in the First Schedule below.

Made under the Common Seal of the
Mayor and Burgesses of the London Borough of Bexley
this 22nd day of November 2023



The Common Seal of the Council was affixed to this Direction
in the presence of Jane Richardson



.....
Deputy Director of Housing and Strategic Planning

Confirmed under the Common Seal of the
Mayor and Burgesses of the London Borough of Bexley
thisday of20.....

The Common Seal of the Council was affixed to this Direction
in the presence of

.....

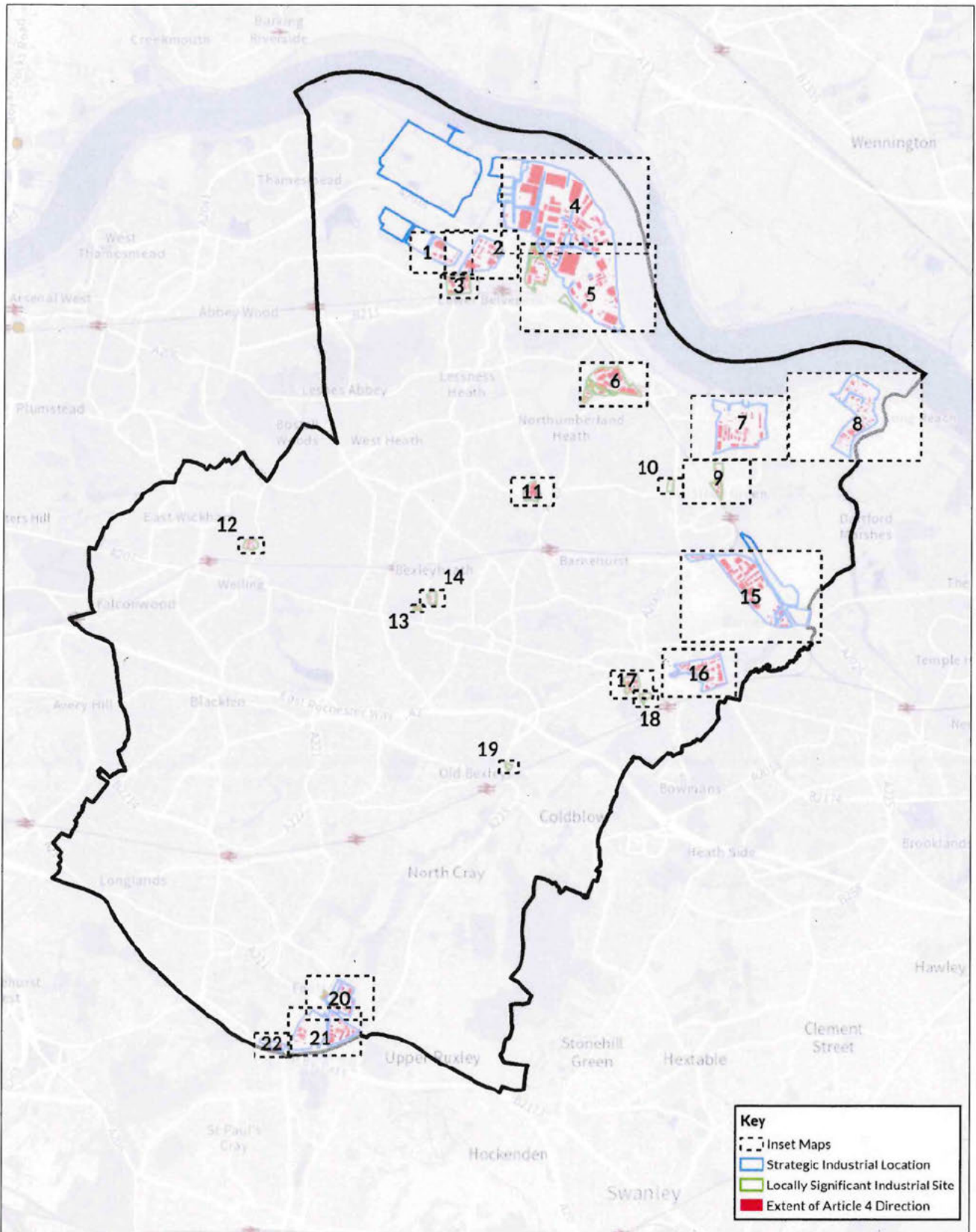
FIRST SCHEDULE

In respect of the Land described in the Second Schedule:

Development consisting of a change of use of a building and any land with its curtilage from a use falling within Class E (commercial, business and service) of the Schedule 2 of the Town and Country Planning (Use Classes) Order 1987 (as amended), to a use falling within Class C3 (dwellinghouses) of Schedule 1 of the Town and Country Planning (Use Classes) Order 1987 (as amended) being development comprised within Class MA of Part 3 of Schedule 2 of the Order.

SECOND SCHEDULE

Maps



Article 4 Direction Overview Map

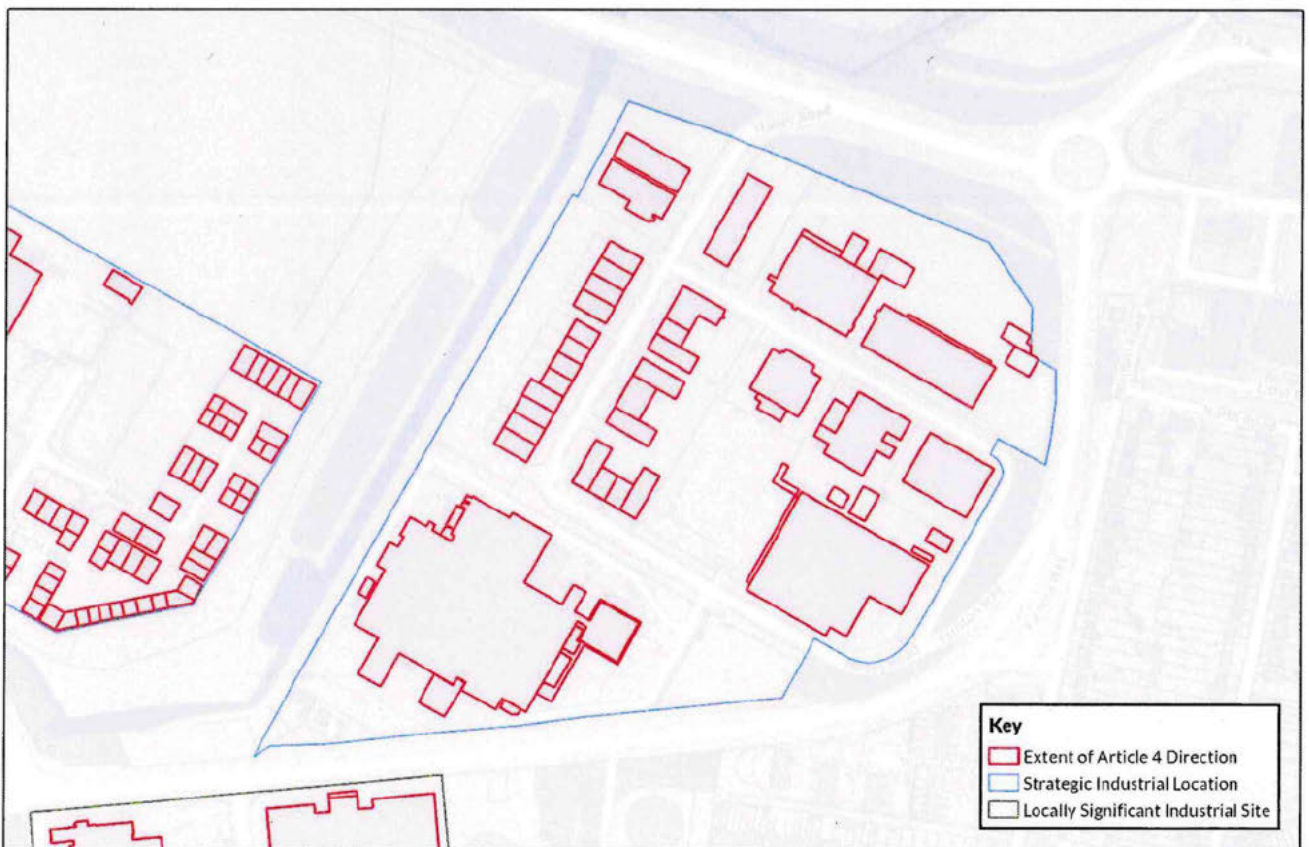
Scale: 1:40,000





Map 1 - Veridion Park Article 4 Direction

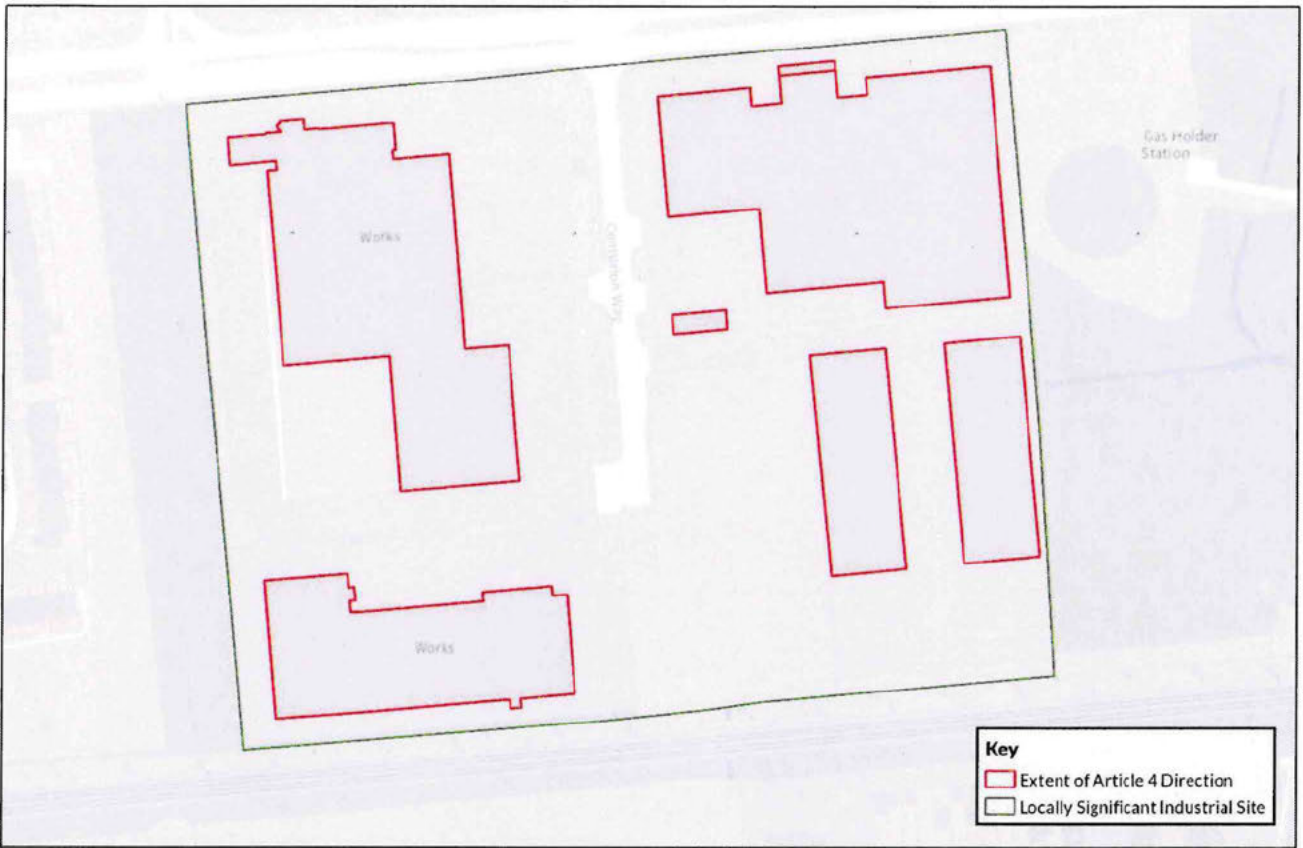
Scale: 1:2,500



Map 2 - Hailey Road Business Park Article 4 Direction

Scale: 1:3,000





Map 3 - Centurion Way Article 4 Direction

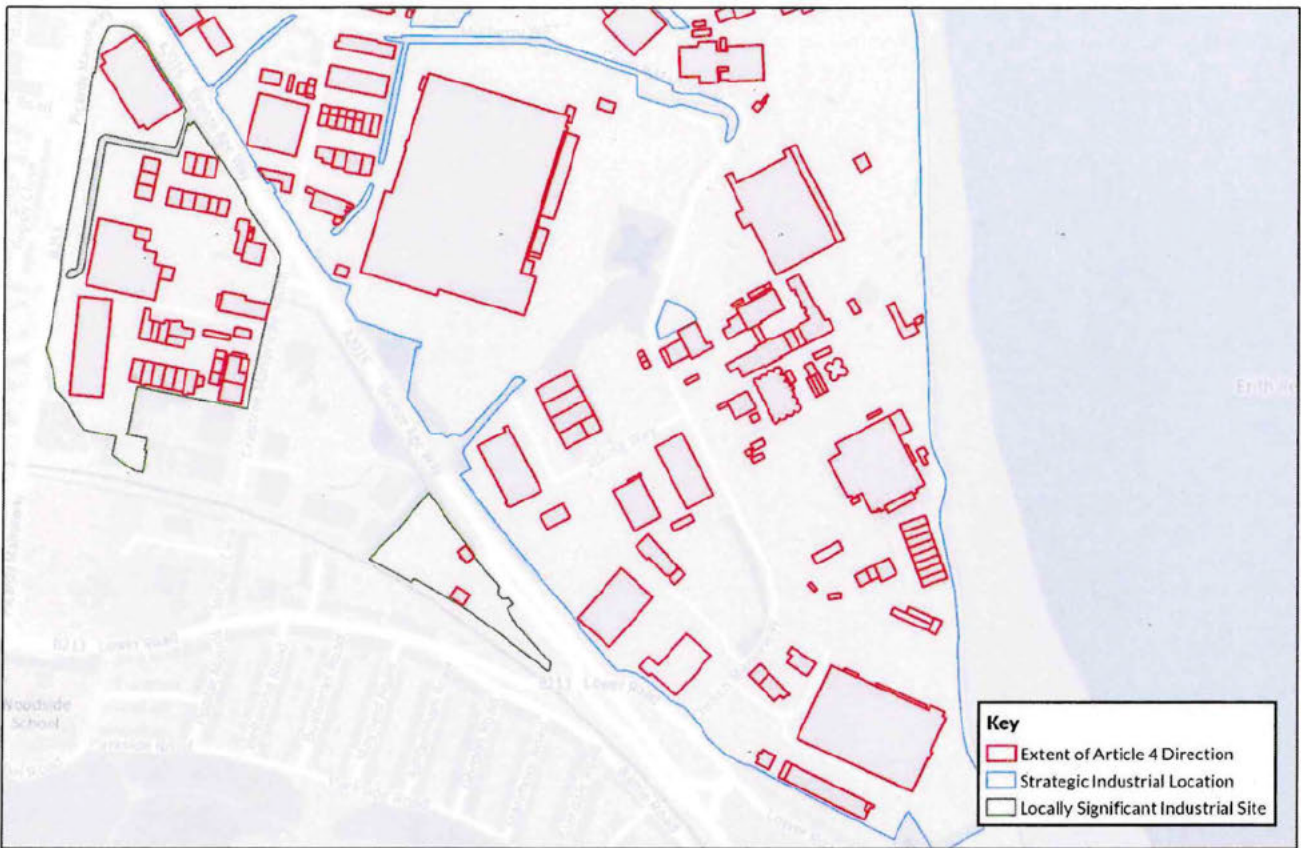
Scale: 1:1,500



Map 4 - Belvedere Industrial Area (1) Article 4 Direction

Scale: 1:6,000





Map 5 - Crabtree Manorway South/Belvedere Industrial Area (2) Article 4 Direction

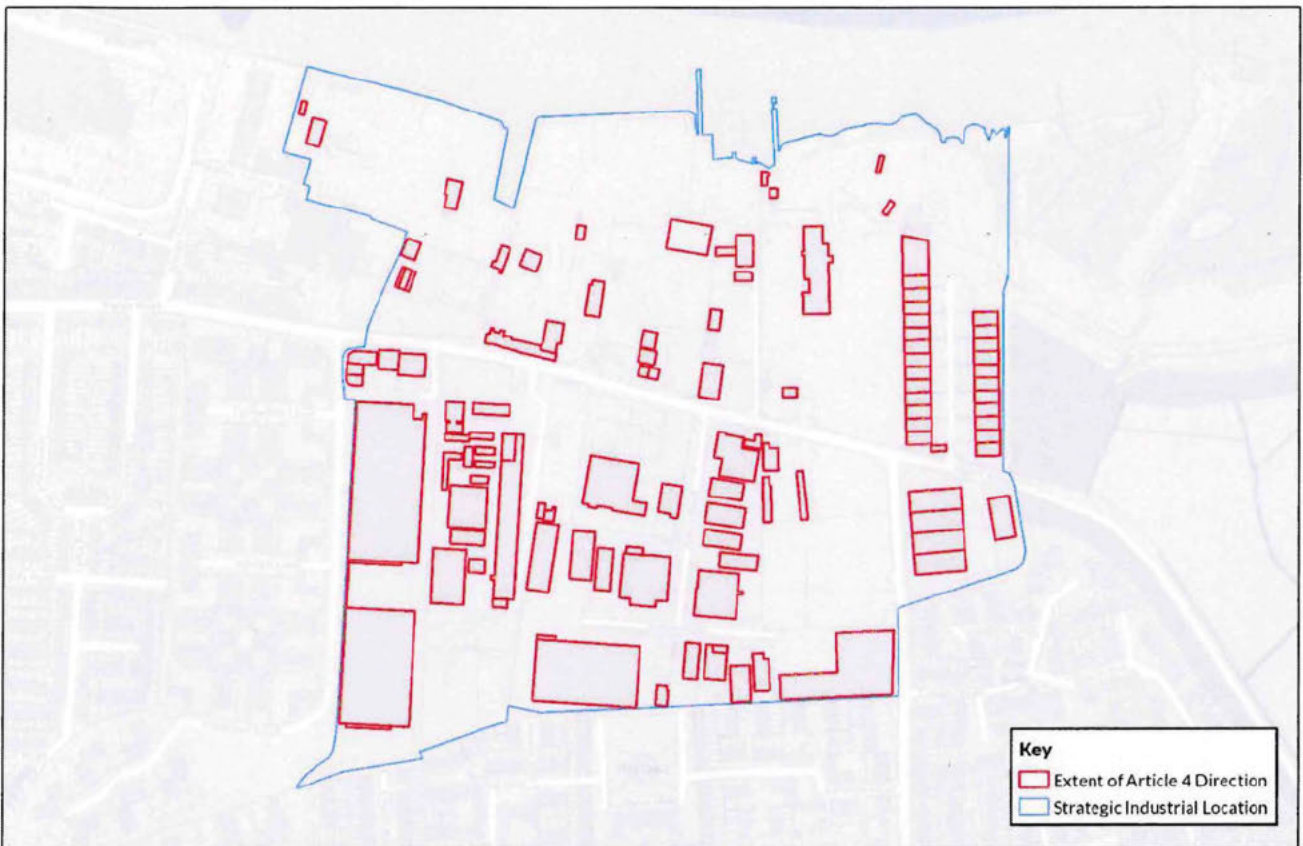
Scale: 1:5,500



Map 6 - Europa Estate/Fraser Road/Birch Walk Article 4 Direction

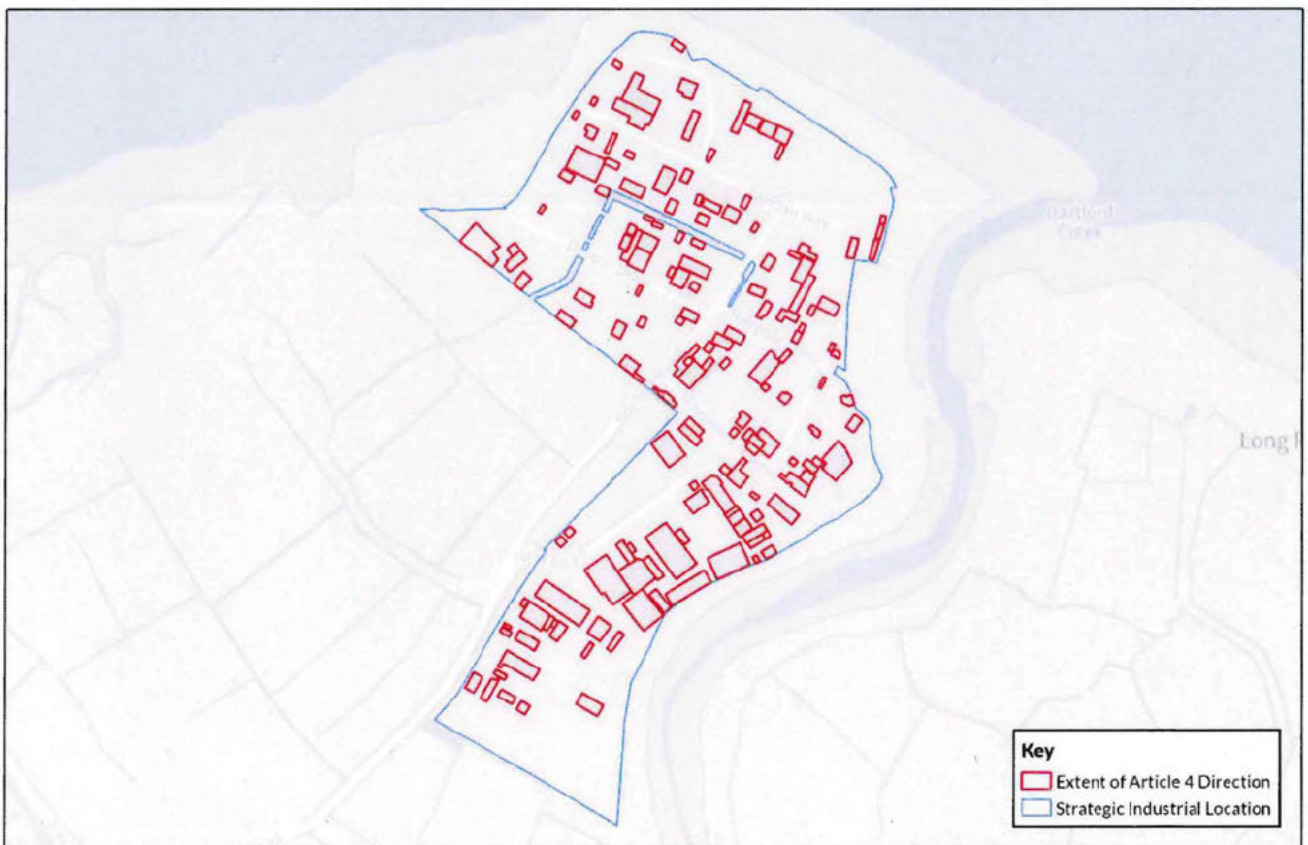
Scale: 1:2,750





Map 7 - Manor Road Industrial Area Article 4 Direction

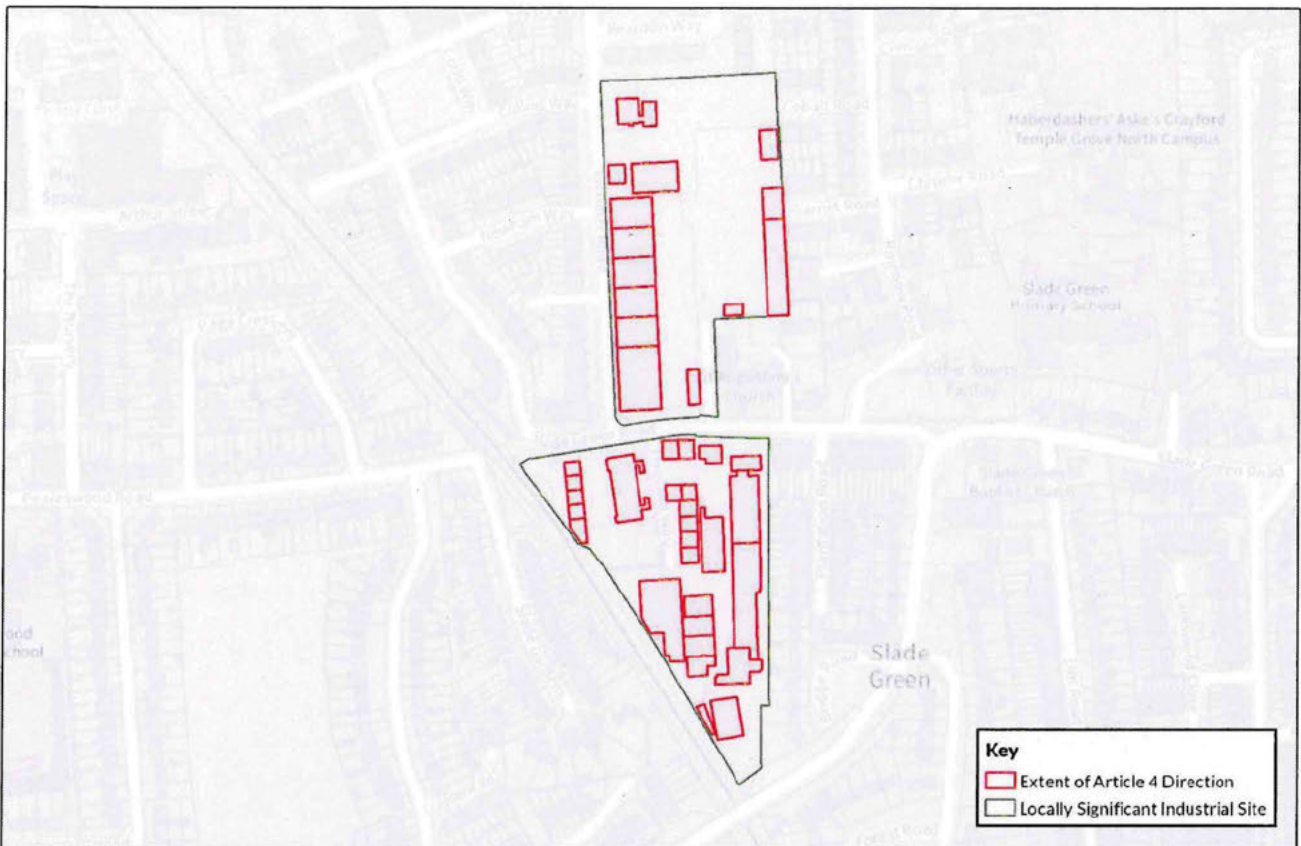
Scale: 1:4,000



Map 8 - Darent Industrial Park Article 4 Direction

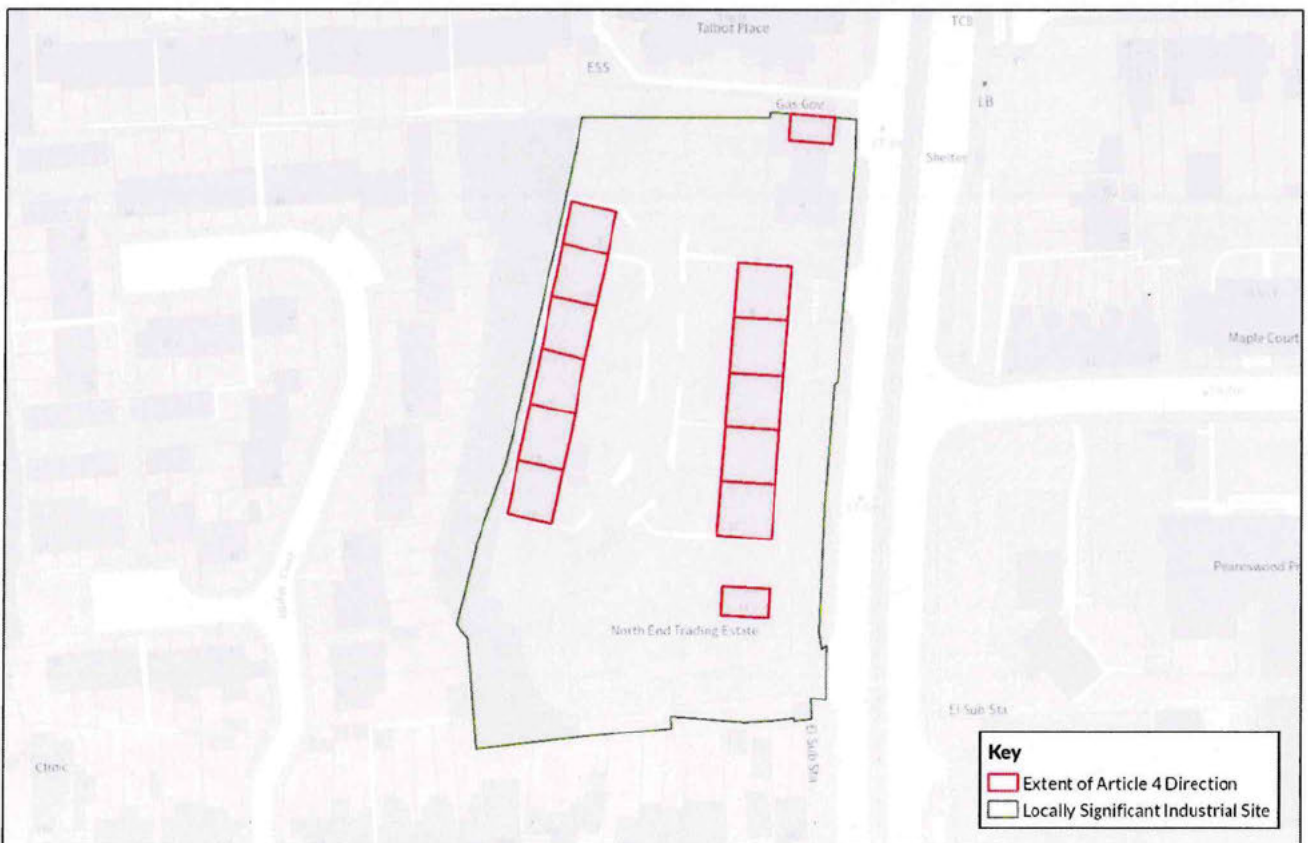
Scale: 1:5,500





Map 9 - Slade Green Industrial Area Article 4 Direction

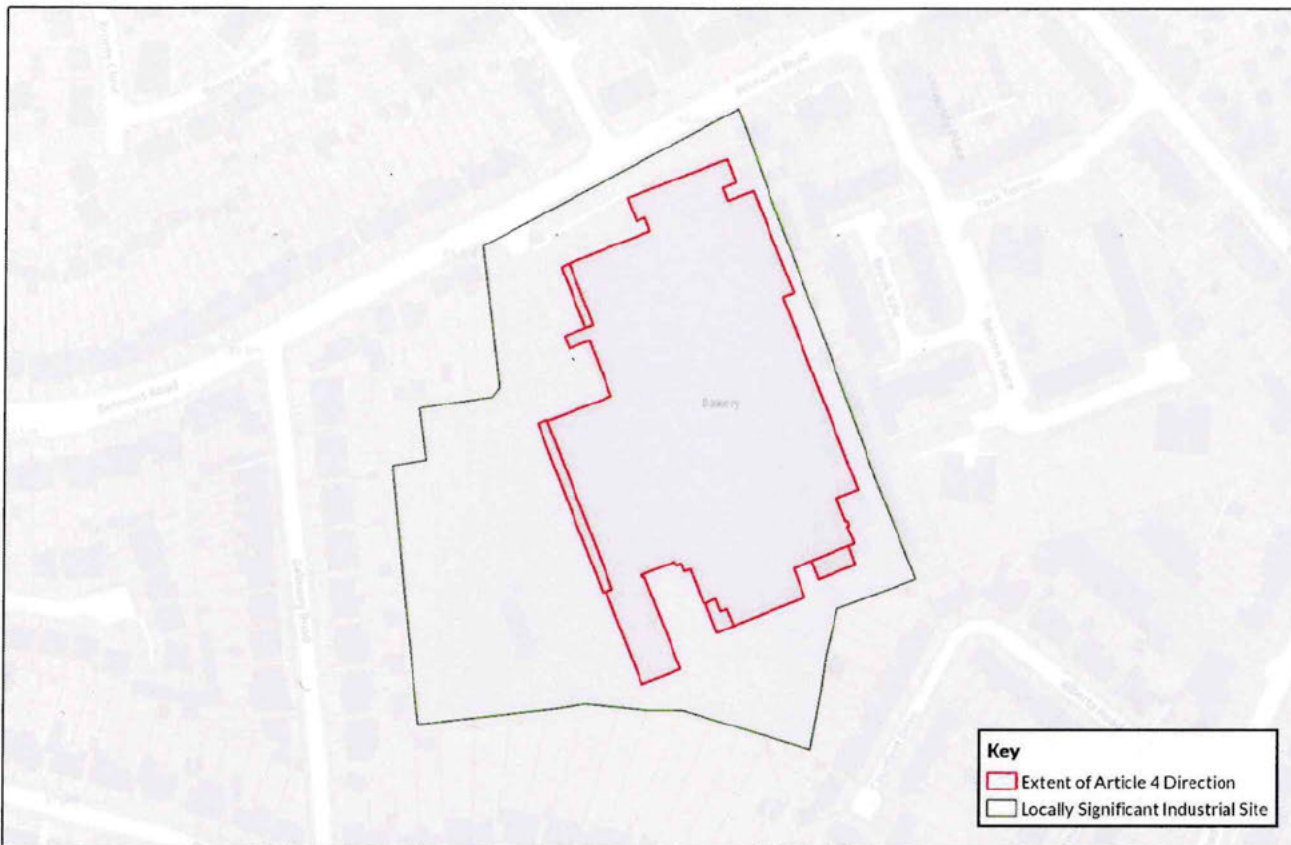
Scale: 1:2,750



Map 10 - North End Trading Estate Article 4 Direction

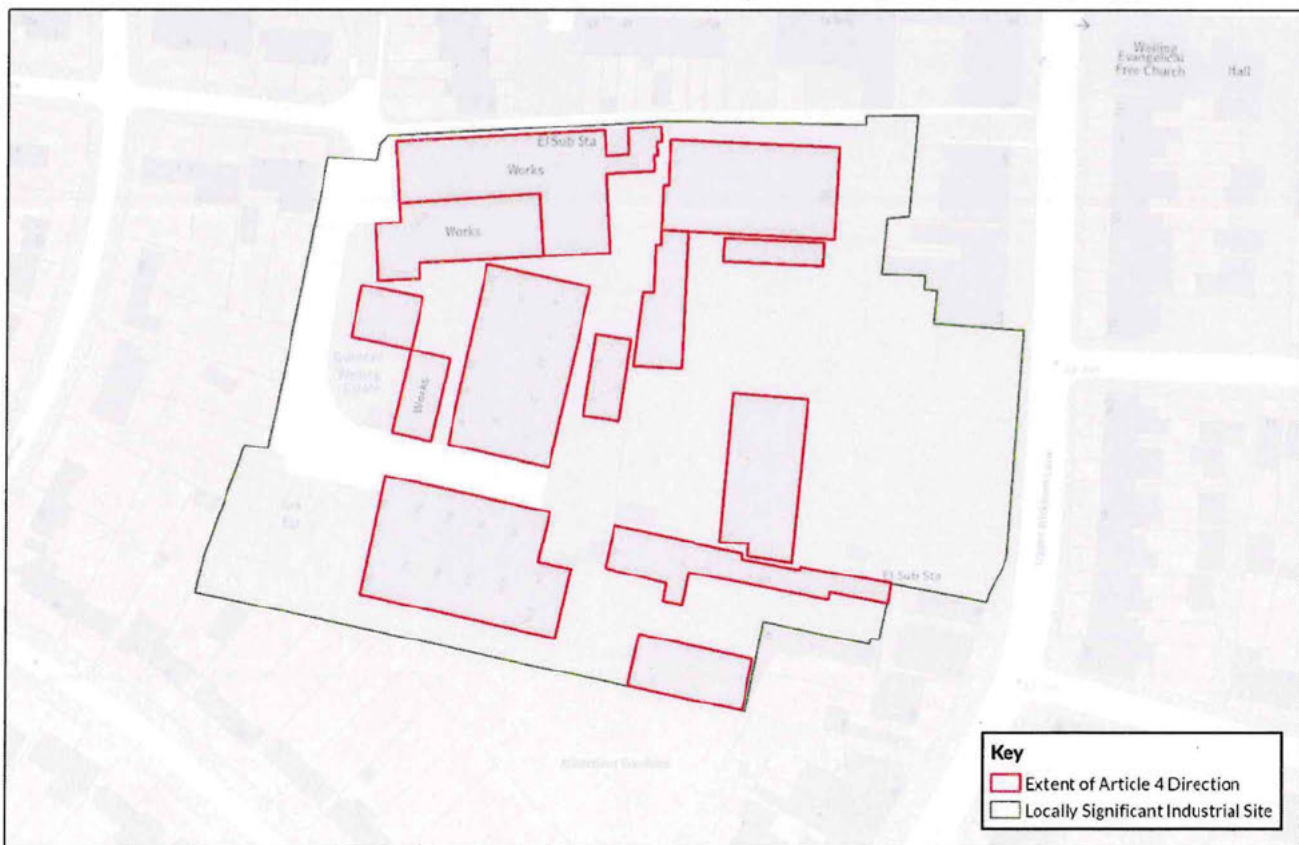
Scale: 1:1,000





Map 11 - British Bakeries Article 4 Direction

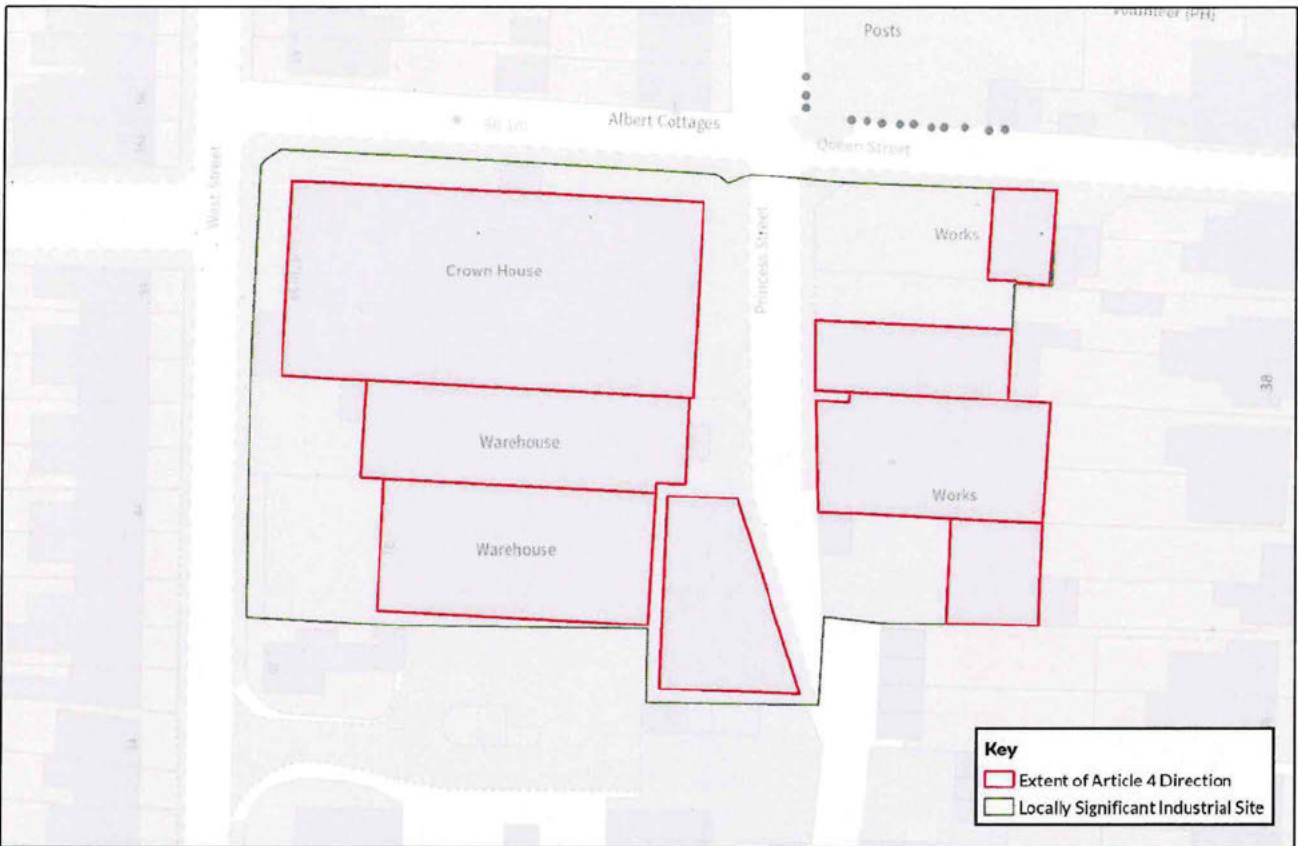
Scale: 1:1,750



Map 12 - Upper Wickham Lane Article 4 Direction

Scale: 1:1,000





Map 13 - Princes Street Employment Area Article 4 Direction

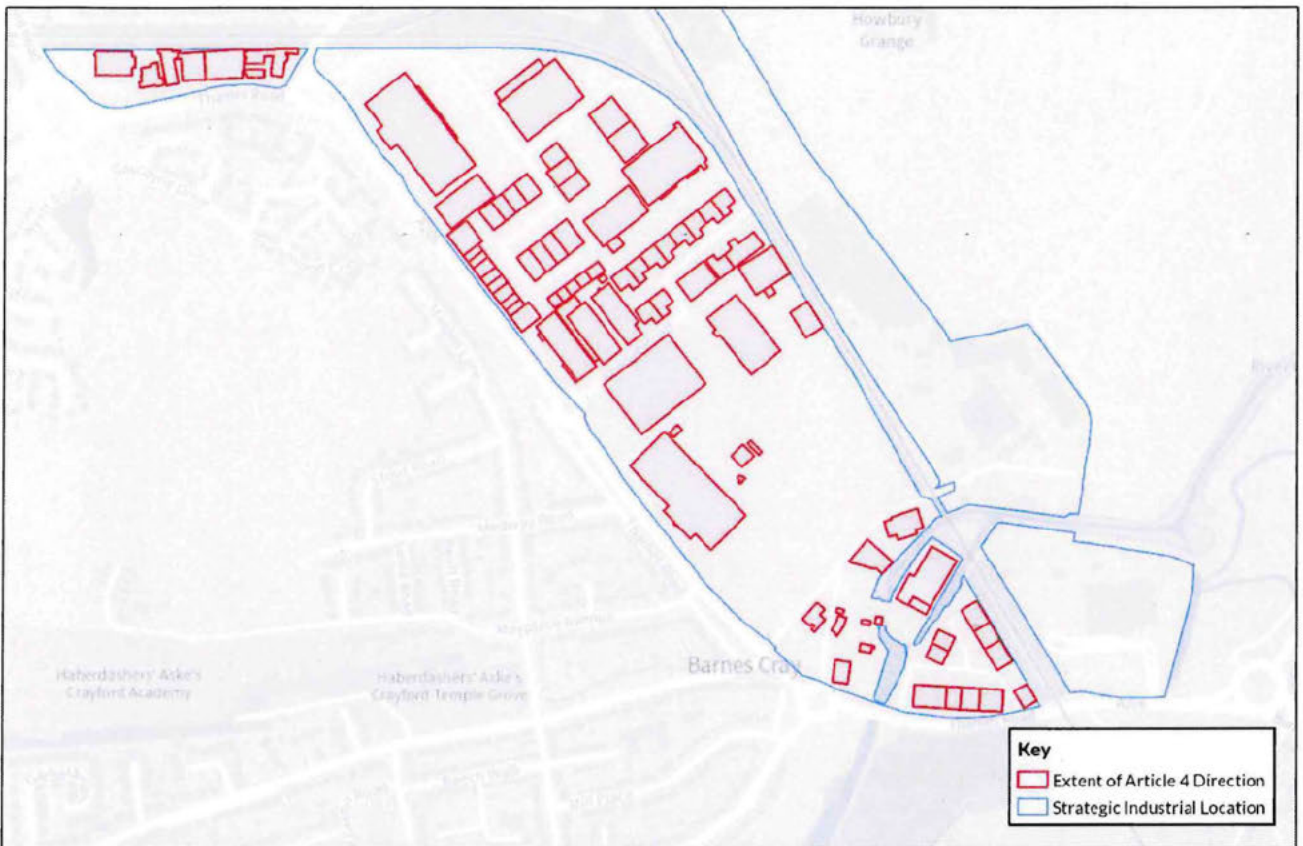
Scale: 1:500



Map 14 - Upland Road Employment Area Article 4 Direction

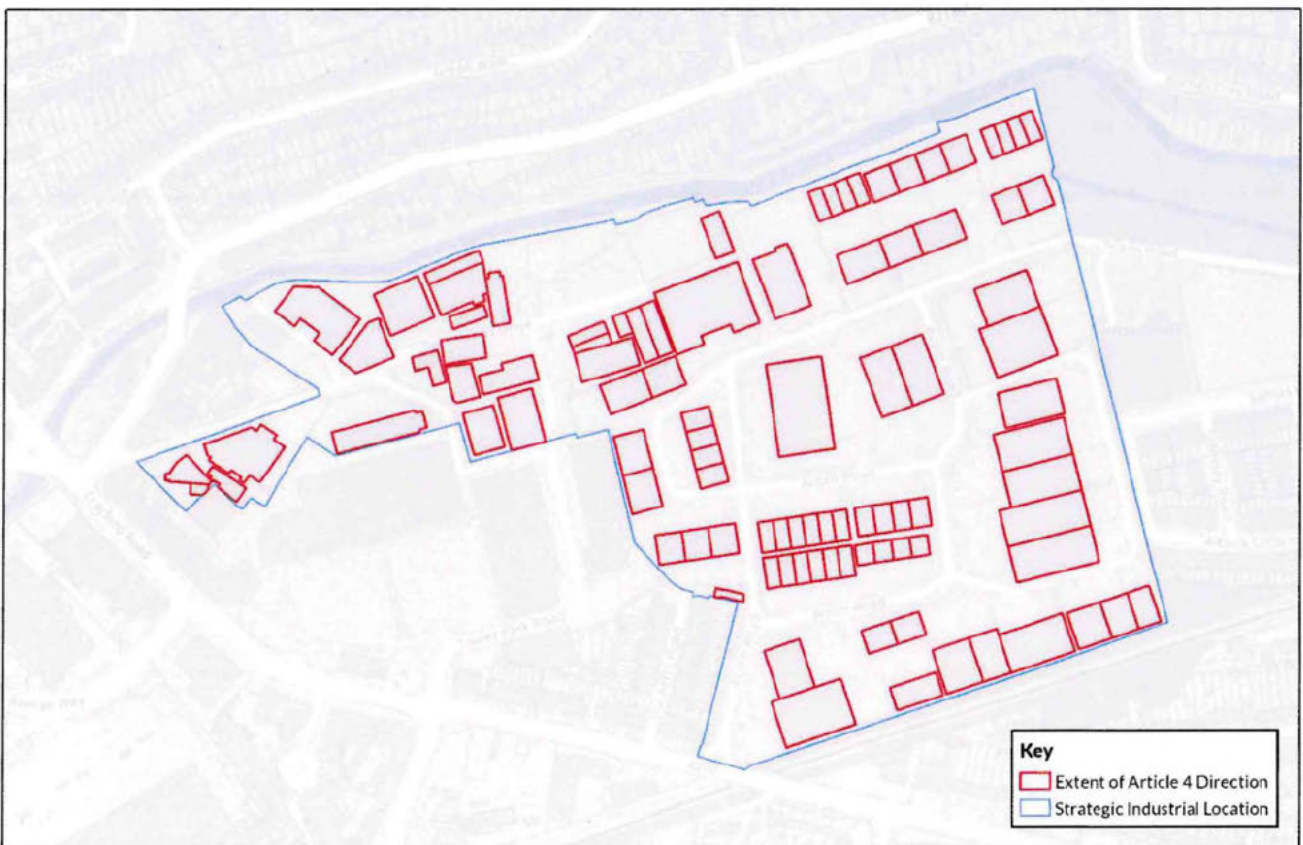
Scale: 1:1,000





Map 15 - Thames Road Industrial Area Article 4 Direction

Scale: 1:5,750



Map 16 - Crayford Industrial Area Article 4 Direction

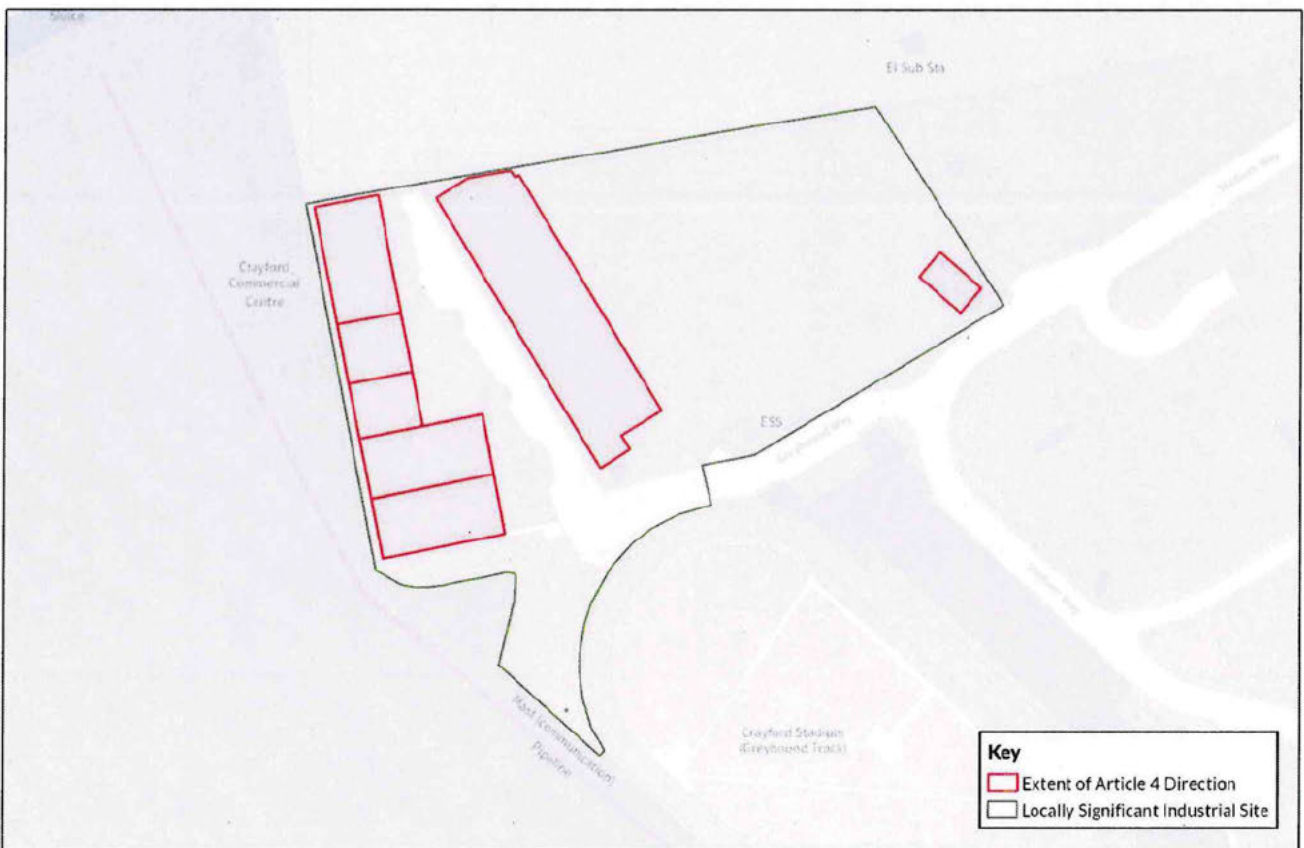
Scale: 1:3,000





Map 17 - Bourne Industrial Park Article 4 Direction

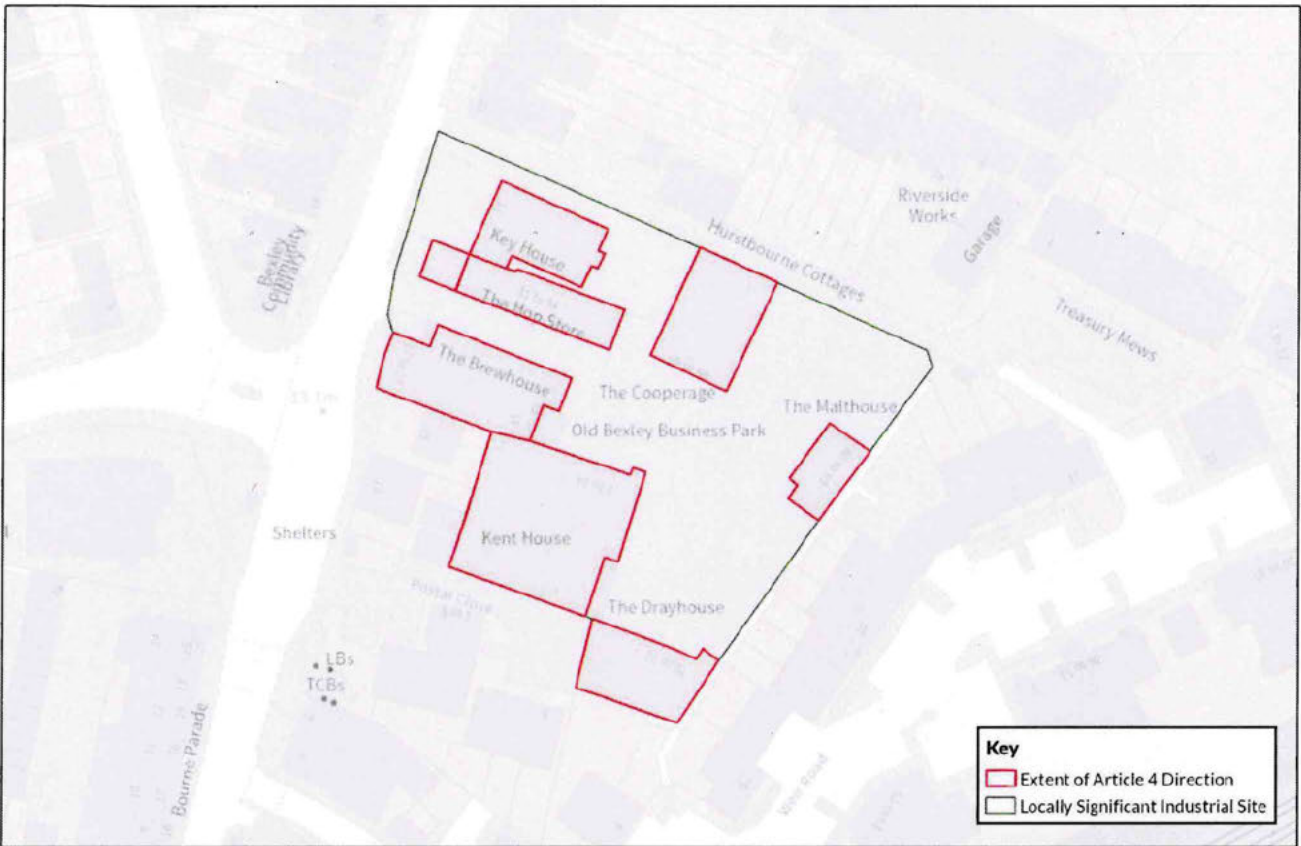
Scale: 1:1,750



Map 18 - West Crayford Industrial Area Article 4 Direction

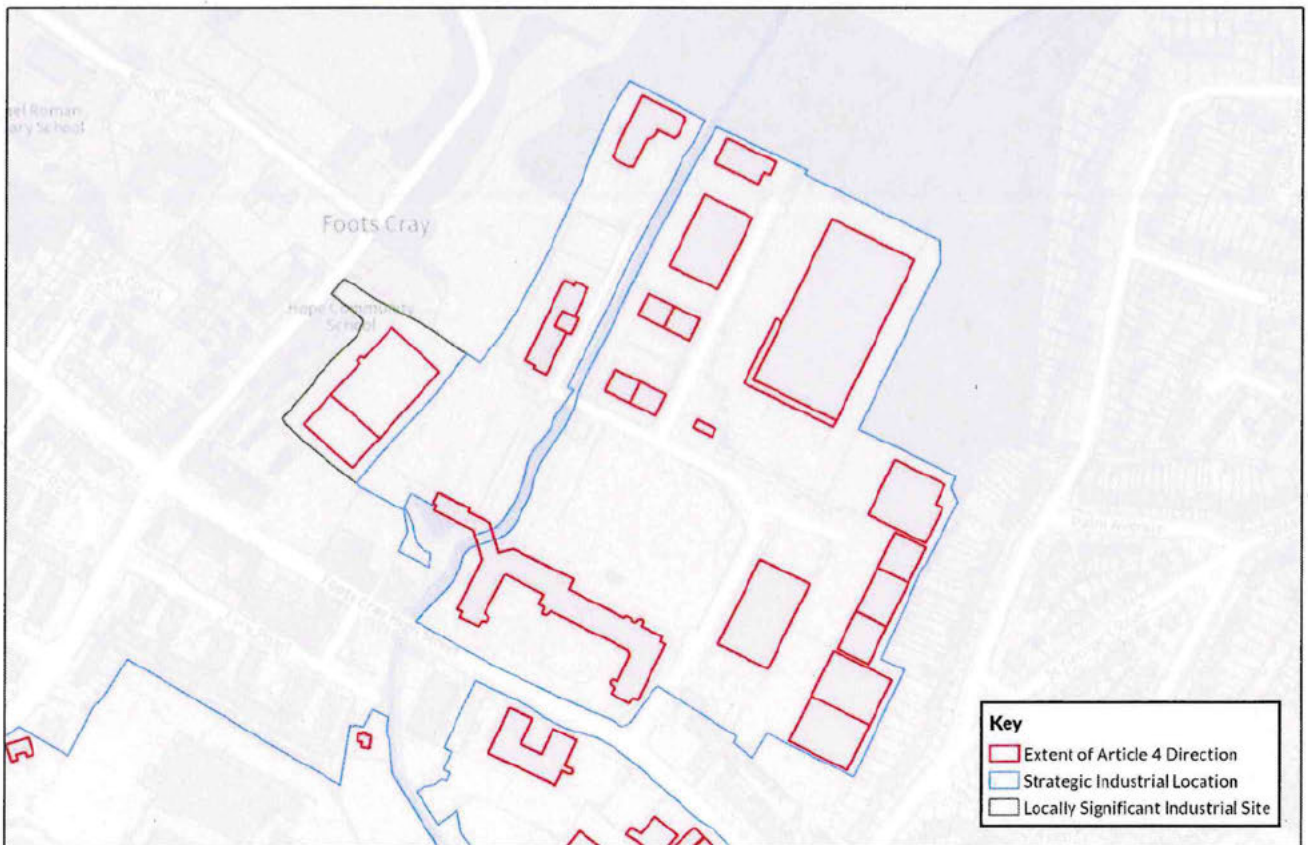
Scale: 1:1,000





Map 19 - Old Bexley Employment Area Article 4 Direction

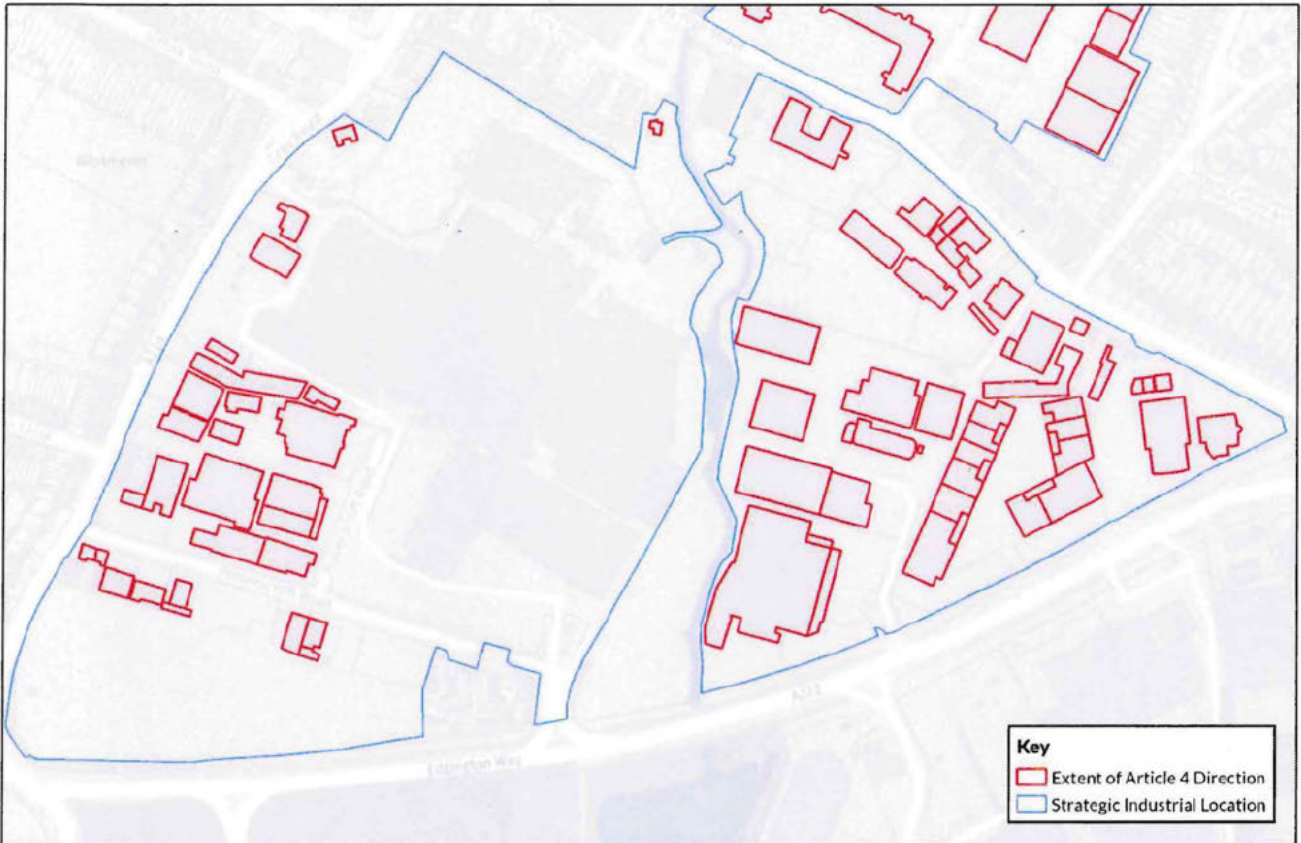
Scale: 1:750



Map 20 - Five Arches Business Centre Article 4 Direction

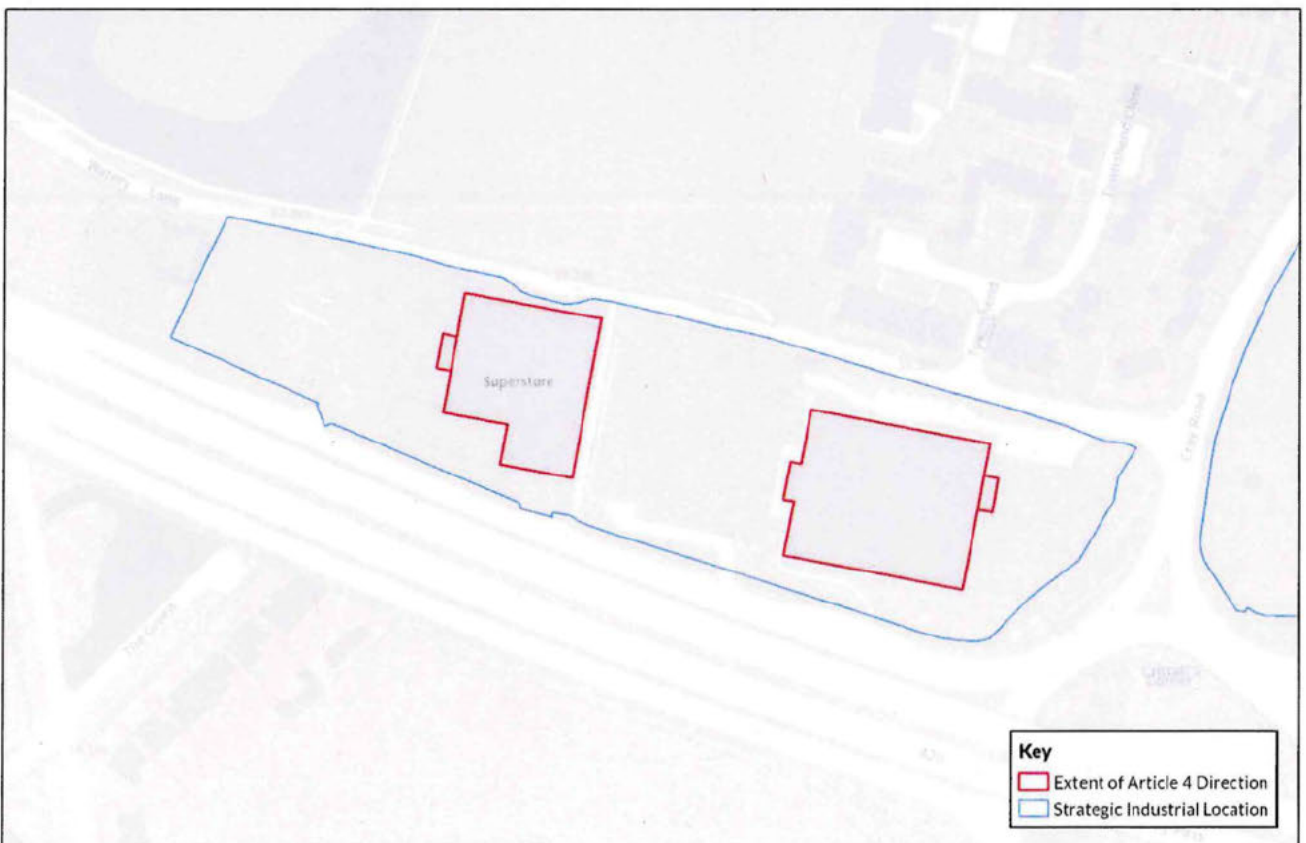
Scale: 1:2,750





Map 21 - Foots Cray Business Area (1) Article 4 Direction

Scale: 1:3,000



Map 22 - Foots Cray Business Area (2) Article 4 Direction

Scale: 1:1,500

